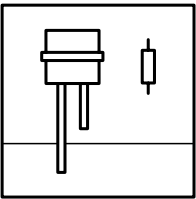


## Multiple-rod electrode



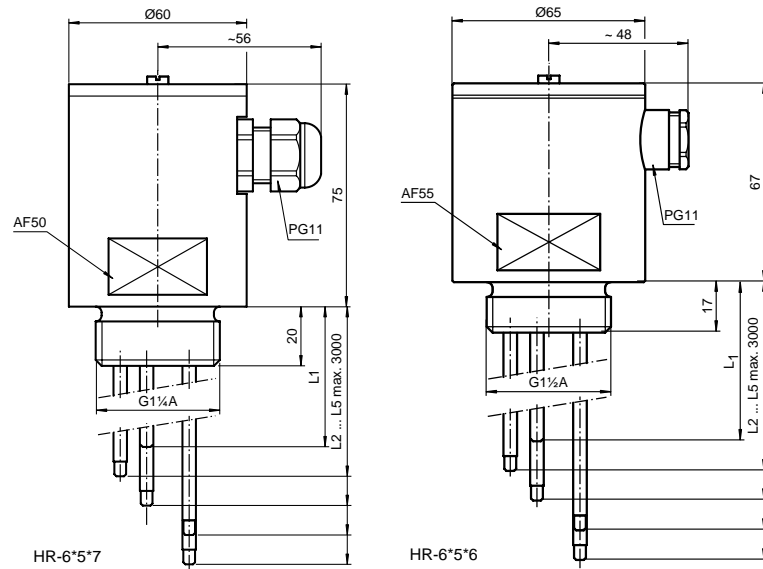
### HR-6\*5\*



### Features

- Sensors for conductive limit value detection
- 1 to 5 electrode rods
- Electrodes  $\varnothing 4$  mm (0.16 inch) or  $\varnothing 6$  mm (0.24 inch)
- Different rod and thread materials

## Dimensions



When placing your order, please specify the length (L1 ... L5) of the electrode rods.  
The electrode rods can be cropped by the user if necessary.

### Function

An electrode relay provides the measuring AC voltage for the electrode. If the product comes into contact with conductive batch, the measuring circuit between electrode and wall of vessel is closed and the electrode relay is switched.

|                                   |   |
|-----------------------------------|---|
|                                   | <b>HR-6*5*</b>  |
| <b>Application</b>                |   |
| <b>Description</b>                | sensors for conductive limit value detection  |
| <b>Function and system design</b> |   |
| <b>Equipment architecture</b>     | a measuring system consists of a rod electrode HR-6051 with electrode relay KFA6-ER 1.6, KFD2-ER 1.6, KFD2-ER-Ex1.W.LB or KFA6-ER-Ex1.W.LB  |
| <b>Input characteristics</b>      |   |
| <b>Measured variable</b>          | measuring voltage directly from the electrode relay   |
| <b>Output characteristics</b>     |   |
| <b>Output signal</b>              | electrode relay creates switch signal corresponding to the selected responsiveness  |
| <b>Operating conditions</b>       |   |
| <b>Ambient conditions</b>         |   |
| Protection class                  | in acc. with IEC 60529 IP65 with terminal box   |
| <b>Process conditions</b>         |   |
| Process temperature               | thread 6: ≤ 150 °C (423 K)<br>thread 7: ≤ 90 °C (363 K)<br>thread 8: ≤ 150 °C (423 K)   |
| Process pressure                  | thread 6: ≤ 40 bar<br>thread 7: ≤ 10 bar<br>thread 8: ≤ 6 bar   |
| <b>Mechanical construction</b>    |   |
| <b>Dimensions</b>                 | length L1 ... L5 max. 3000 mm (10 ft)   |
| <b>Material</b>                   | housing: stainless steel 1.4571, PP or PTFE<br>thread: stainless steel 1.4571, PP or PTFE<br>electrode rod: stainless steel 1.4571, Hastelloy C, titanium or tantalum   |
| <b>Process connection</b>         | G1¼A thread   |
| <b>Connection</b>                 | terminals in the terminal box: max. 2.5 mm <sup>2</sup>   |
| <b>Accessories</b>                |   |
| <b>Designation</b>                | <ul style="list-style-type: none"> <li>• spacer, PTFE for Ø4 mm (0.16 inch) rods</li> <li>• spacer with clamp screw, PTFE, for Ø4 mm (0.16 inch) rods</li> <li>• spacer with clamp screw, PTFE, for Ø6 mm (0.24 inch) rods</li> <li>• counter nut G1¼A made of PVC</li> <li>• counter nut G1¼A made of stainless steel</li> <li>• LZ-1203, mounting angle of stainless steel 1.4571 with G1¼A drilling</li> </ul> |

Type code/model number

