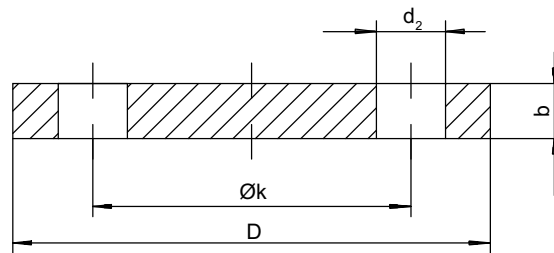




- flanges according to DIN 2527, form B
- nominal size DN 50 ... DN 150
- nominal pressure PN 10
- for mounting of level sensors
- stainless steel / plastic versions

Dimensions



Nom. size DN	D	Flange b	Øk	#	Screws Thread	d ₂	Mass* [kg] Form B
50	165	18	125	4	M16	18	2.88
65	185	18	145	4	M16	18	3.66
80	200	20	160	8	M16	18	4.77
100	220	20	180	8	M16	18	5.65
150	285	22	240	8	M20	22	10.4

* for stainless steel with $\rho = 7.85 \text{ g/cm}^3$

Technical data

Flanges in stainless steel 316 Ti / 320 S 18

- HR-96421□
- HR-96521□
- HR-96621□
- HR-96721□
- HR-96921□

- DN 50 PN 10
- DN 65 PN 10
- DN 80 PN 10
- DN 100 PN 10
- DN 150 PN 10

Flanges in PP

- HR-97411□
- HR-97511□
- HR-97611□
- HR-97711□

- bore like PN 10, but only for pressureless applications
- DN 50 PN 10
- DN 65 PN 10
- DN 80 PN 10
- DN 100 PN 10

Flanges in PVC

- HR-97421□
- HR-97521□
- HR-97621□
- HR-97721□

- bore like PN 10, but only for pressureless applications
- DN 50 PN 10
- DN 65 PN 10
- DN 80 PN 10
- DN 100 PN 10

Flanges in PTFE

- HR-97431□
- HR-97531□
- HR-97631□
- HR-97731□

- bore like PN 10, but only for pressureless applications
- DN 50 PN 10
- DN 65 PN 10
- DN 80 PN 10
- DN 100 PN 10

**center drilling for level sensor
(with all versions)**

- HR-□□□□□0
- HR-□□□□□1
- HR-□□□□□2
- HR-□□□□□3
- HR-□□□□□4
- HR-□□□□□5
- HR-□□□□□6

- without center drilling
- with center drilling for thread G $\frac{1}{2}$ A
- with center drilling for thread G $\frac{3}{4}$ A
- with center drilling for thread G1A
- with center drilling for thread G1 $\frac{1}{4}$ A
- with center drilling for thread G1 $\frac{1}{2}$ A
- with center drilling for thread G2A

Date of issue 26.06.97



Digital Display
DA4-B8L

Displays provide operating and maintenance personnel with a simple, visual method of inspection. They convert the measurement signal generated for this purpose into a readable form. Depending on the task and setting, values such as 4 ... 20 mA or 0 ... 100% are displayed.

Contents	Page
Digital Display DA4-B8L	160
Display and Evaluator DA4/Ex40	162
Display and Evaluator DA4/Ex50	164