

AS-Interface Addressing Device



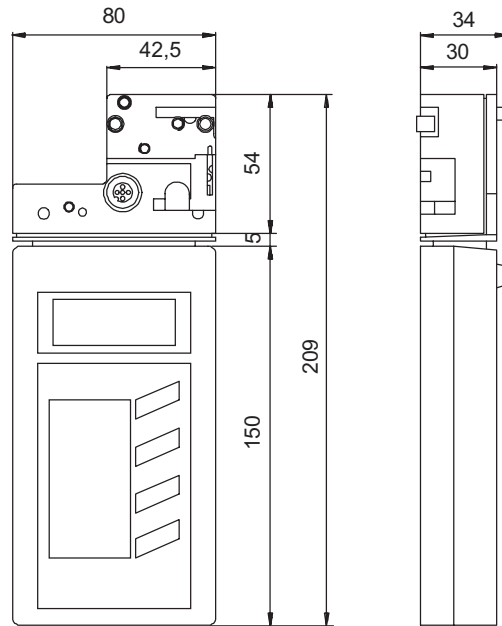
Model Number

VAP-HH1-220V

Addressing device

Features

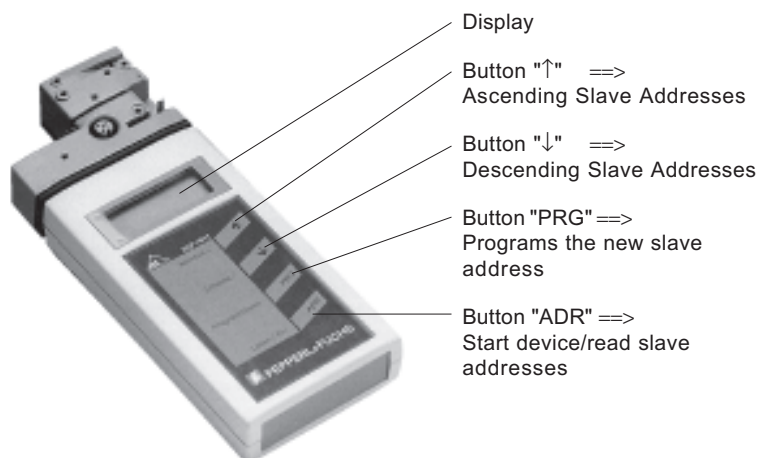
- Establishes slave addresses
- Verifies readdressing
- Slave connection is short circuit and overload protected
- LCD display of errors



Operation

The device is activated with the "ADR" button and automatically powers off if not used within a period of about one minute.

- Press the "ADR" button to display the current slave addresses.
- To enter new addresses, select from the address ring (i.e. 31...0...31) with the "↑" and "↓" keys. Press the button to advance the addresses one at a time. Hold the button to scroll through the addresses (0.5 s per addresses).
- Press "PRG" to load the new address in the slave. The programmed address automatically displays after about 0.5 s.
- To program address 0 in the slave, simultaneously press and hold "ADR" and "PRG."



Note: Charge battery before using!

Technical Data:

Model Number	VAP-HH1-220V
Indicator	LCD, character size is 13 mm
Buttons	keypad, 4 keys
Interface	AS-Interface, short circuit and overload protected
Power supply	battery operated, please use the accompanying battery recharger only for recharging (recharge time approximately 14 hours)
Recharger	[V AC] 115/230, plug-in recharger (included)
Operating life	[h] 8 / \geq 250 read/write operations with a fully charged battery
Protection (IEC) EN 60 529	IP20
Operating temperature	[°C] 0 ... +50 (32 ... +122°F)
Storage temperature	[°C] -20 ... +55 (-4 ... +131°F)
Weight	[g] approximately 550

Description

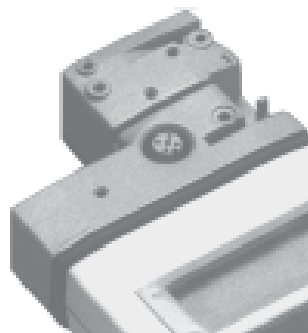
The VAP-HH1-220V is a compact device for addressing AS-Interface slaves such as sensors, actuators and coupling modules. The VAP-HH1-220V uses a universal adapter to connect to other devices.

Display

The LCD displays the address or an error code.

The following devices and housing styles connect easily to this device:

- V1 quick disconnect (M12)
- Mini-limit switch
- Limit switch
- FP housing
- AS-Interface coupling module (series...-G1, G4.)



Error Signals:

- F1 = Overload of the AS-Interface supply
- F2 = Slave is not connected or defective
- F3 = Error in slave programming

LOBAT = **Recharge battery !**

Another 30 read and addressing functions are possible after the first indicator. To recharge the battery, use only the battery charger included with the VAP-HH1-220V.

Status Indicator:

- + = the indicated address is identical to the last programmed slave address.

Accessories

VAZ-PK-V1-CINCH AS-interface programming cable

VAZ-PK-G3F AS-interface programming cable

The VAZ-PK-V1-CINCH programming cable connects the addressing device and modules with CINCH sockets (KF-, KF2- or K3-modules). The VAZ-AK-V1-G3F programming cable connects G3F modules to the addressing device.