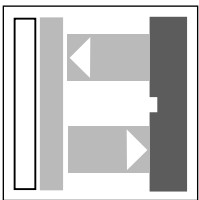




Diffuse reflective photoelectric sensor
 OCH150-M1K-E01
 OCH150-M1K-E23

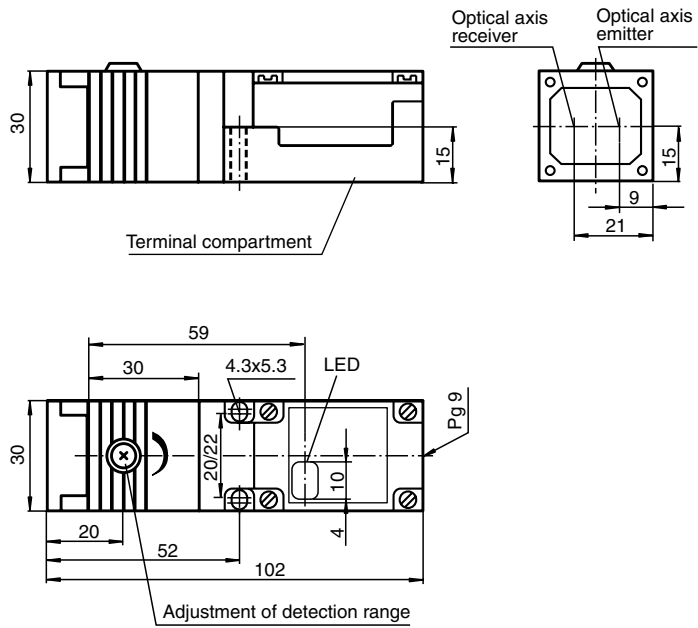


150 mm



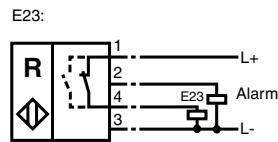
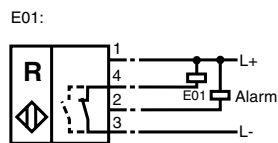
Features

- Background suppression
- Light/Dark ON, switchable
- Pre-fault indication and output (dynamic and static)
- Protected against mutual interferences
- Removable terminal block, integrated connector M12x1 (V1) on request
- Protection degree IP67
- Position of the sensor head adjustable
- Scratch resistant mineral glass plate



Mounting accessories etc., see section "accessories"

Electrical connection



Pre-fault indicator Terminal 2
 Switch output Terminal 4

Technical data

Valid for the whole family

General specifications

Sensing range	0 ... 150 mm
Adjustment range	30 ... 150 mm
Reference target	Standard white 100 mm x 100 mm
Light type	IR-light 880 nm
Ambient light limit	≤ 10000 Lux sun light ≤ 7500 Lux halogen light
Standard conformity	EN 60947-5-2

Electrical specifications

Rated operational voltage	U_e 10 ... 30 V DC, ripple 10 % _{SS}
No-load supply current	I_0 ≤ 35 mA
Time delay before availability	t_v ≤ 20 ms

Indicating/operating means

LED yellow	Switching state
LED green	Power on
LED red	2 Hz flashing, pre-fault indication

Output

Rated operational current	I_e Switch output: ≤ 200 mA Output of the pre-fault indication ≤ 10 mA each short/overload protected
---------------------------	--

Voltage drop	U_d ≤ 2.5 V
Switching frequency	f ≤ 1.5 kHz switchable (S1)
Switch-on delay	t_{on} 2.5 ms by 200 kHz 0.3 ms at 1.5 kHz 20 ms switchable (S2)

Pulse extension

Ambient conditions

Ambient temperature	-25 ... 60 °C (248 ... 333 K)
Storage temperature	-40 ... 70 °C (233 ... 343 K)

Mechanical specifications

Protection degree	IP67 according to EN 60529, Class II insulation
Connection type	Terminal compartment PG9, ≤ 2.5 mm ²
Material	
Housing	PBT
Light exit	Scratch resistant mineral glass plate
Mass	100 g

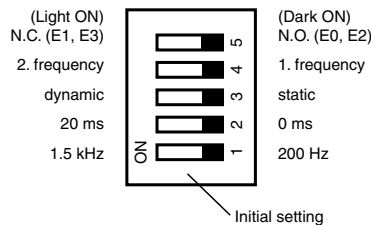
Version data

Model number	OCH150-M1K-E01	OCH150-M1K-E23
Output type	1 switch output E0/E1, npn NO/NC switchable (S5) Pre-fault output: npn, NO, static/dynamic switchable (S3)	1 switch output E2/E3, pnp NO/NC switchable (S5) Pre-fault output: npn, NO static/dynamic switchable (S3)

Note

Selector switches in terminal compartment

- S5 Switch output
- S4 Pulse frequency
- S3 Pre-fault indicator
- S2 Pulse extension
- S1 Switch frequency

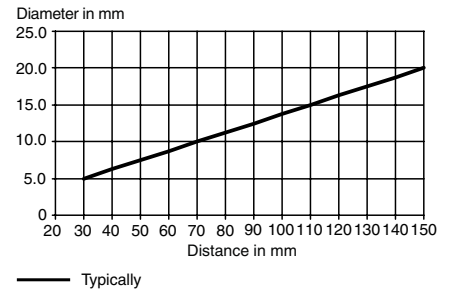


Model number

OCH150-M1K-E01
OCH150-M1K-E23

Characteristic curves

Light spot diameter = f (Distance)



Sensing range between target and background

