

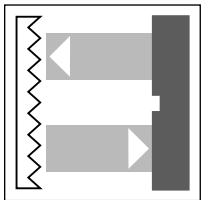
Series -F3

Dimensions



Retro-reflective photoelectric sensor

OCS1000-F3-Z0
OCS1000-F3-Z1



1000 mm

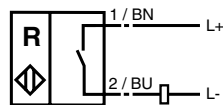


Features

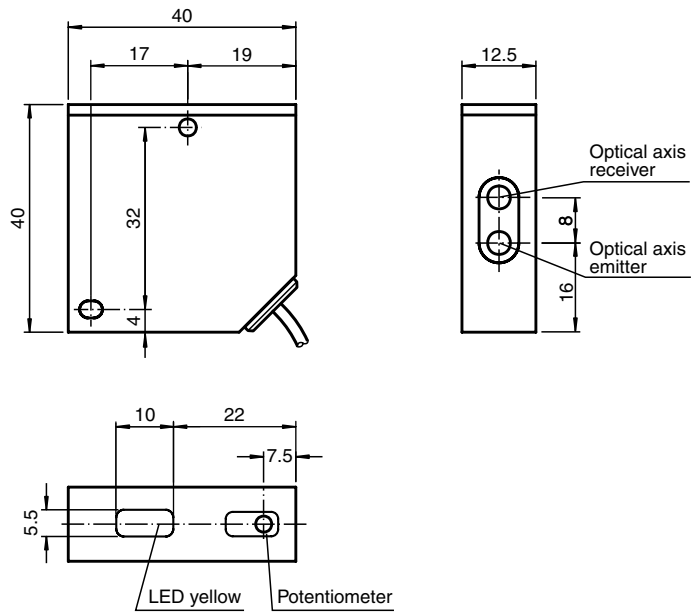
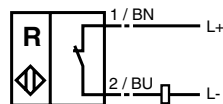
- Two wire sensor
- Reverse polarity protection
- Scratch resistant mineral glass plate
- Protection degree at least IP67

Electrical connection

Z0 N.O. (Dark ON):



Z1 N.C. (Light ON):



Reflectors, connectors, mounting accessories etc... see section "accessories".

Technical data

Valid for the whole family

General specifications

Sensing range	0 ... 1000 mm
Reference target	Retro-reflector Ø 80 mm
Light type	IR-light 950 nm
Ambient light limit	≤ 10000 Lux sun light ≤ 5500 Lux halogen light
Reflector range	200 ... 1000 mm
Standard conformity	EN 60947-5-2

Electrical specifications

Rated operational voltage	U_e 10 ... 60 V DC, $\hat{U}_e = 60$ V
Time delay before availability	t_v ≤ 20 ms

Indicating/operating means

LED yellow	Switching state
Potentiometer	Adjustment of the sensitivity

Output

Rated operational current	I_e 6 ... 100 mA, short circuit/overload protected
Off-state current	I_r ≤ 1 mA
Voltage drop	U_d ≤ 4.8 V
Switching frequency	f ≥ 100 Hz
Switch-on delay	t_{on} 5 ms

Ambient conditions

Ambient temperature	-25 ... 70 °C (248 ... 343 K)
Storage temperature	-40 ... 80 °C (233 ... 353 K)

Mechanical specifications

Protection degree	IP67 according to EN 60529
Connection type	2 m cable, 2 x 0,14 mm ² , PUR
Material	
Housing	PBT
Light exit	Scratch resistant mineral glass plate
Mass	50 g

Version data

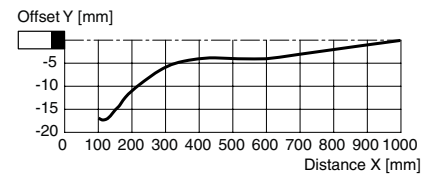
Model number	OCS1000-F3-Z0	OCS1000-F3-Z1
Operating mode	dark ON	light ON
Output type	1 switch output Z0: NO	1 switch output Z1: NC

Model number

OCS1000-F3-Z0
OCS1000-F3-Z1

Characteristic curves

Characteristic response curve



Permissible distance (offset) between optical axis and retro-reflector.

