



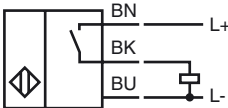
### Model Number

NMB3-8GM50-E2

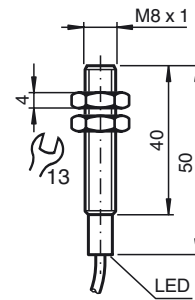
### Features

- Stainless steel sensing face
- 3 mm flush
- Increased operating distance

### Connection



### Dimensions



### Technical Data

#### General specifications

Switching element function	PNP	NO
Rated operating distance	$s_n$	3 mm
Installation		flush
Output polarity		DC
Assured operating distance	$s_a$	0 ... 2.43 mm
Reduction factor $r_{AI}$		0.3
Reduction factor $r_{Cu}$		0.2
Reduction factor $r_{304}$		0.8
Reduction factor $r_{S137}$		1

#### Nominal ratings

Operating voltage	$U_B$	10 ... 30 V DC
Switching frequency	$f$	0 ... 360 Hz
Hysteresis	$H$	5 ... 15 typ. 10 %
Reverse polarity protection		yes
Short-circuit protection		yes
Voltage drop	$U_d$	$\leq 2$ V
Operating current	$I_L$	$\leq 100$ mA
Current consumption		$\leq 10$ mA
Off-state current	$I_r$	$\leq 10$ $\mu$ A

#### Indicators/operating means

Operating display	LED red: output
-------------------	-----------------

#### Standard conformity

Standards	EN 60947-5-2:2007 IEC 60947-5-2:2007
-----------	---

#### Ambient conditions

Ambient temperature	0 ... 75 °C (32 ... 167 °F)
---------------------	-----------------------------

#### Mechanical specifications

Connection type	cable PUR, 2 m
Core cross-section	0,14 mm <sup>2</sup>
Housing material	Stainless steel 1.4305 / AISI 303
Sensing face	Stainless steel 1.4305 / AISI 303
Protection degree	IP67

#### Approvals and certificates

UL approval	cULus Listed, General Purpose
CSA approval	cCSAus Listed, General Purpose
CCC approval	Products with a maximum operating voltage of $\leq 36$ V do not bear a CCC marking because they do not require approval.