



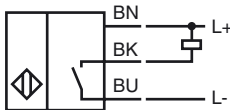
**Model Number**

NMB15-30GM55-E0

**Features**

- 15 mm flush
- Stainless steel sensing face
- Increased operating distance

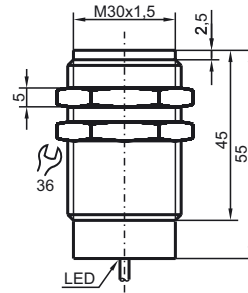
**Connection**



**Accessories**

**AB-30**  
Mounting aid

**Dimensions**



**Technical Data**

**General specifications**

Switching element function	NPN	NO
Rated operating distance	$s_n$	15 mm
Installation	flush	(Requirements: see drawing below)
Output polarity	DC	
Assured operating distance	$s_a$	0 ... 12.15 mm
Actuating element	Ferrous and nonferrous targets	
Reduction factor $r_{Al}$		0.4
Reduction factor $r_{Cu}$		0.2
Reduction factor $r_{304}$		0.85
Reduction factor $r_{S137}$		1

**Nominal ratings**

Operating voltage	$U_B$	10 ... 30 V DC
Switching frequency	$f$	0 ... 150 Hz
Hysteresis	$H$	3 ... 15 typ. 10 %
Reverse polarity protection		reverse polarity protected
Short-circuit protection		pulsing
Voltage drop	$U_d$	$\leq 2$ V
Operating current	$I_L$	$\leq 200$ mA
Off-state current	$I_r$	$\leq 10$ $\mu$ A
No-load supply current	$I_0$	$\leq 10$ mA
Operating voltage display		LED, green
Indication of the switching state		LED, yellow

**Ambient conditions**

Ambient temperature	-25 ... 70 °C (-13 ... 158 °F)
---------------------	--------------------------------

**Mechanical specifications**

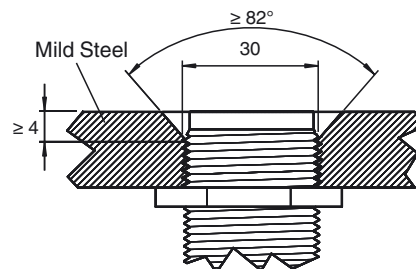
Connection type	cable PUR , 2 m
Core cross-section	0.5 mm <sup>2</sup>
Housing material	Stainless steel 1.4305 / AISI 303
Sensing face	Stainless steel 1.4305 / AISI 303
Protection degree	IP69K

**Compliance with standards and directives**

Standard conformity	
Standards	EN 60947-5-2:2007 IEC 60947-5-2:2007

**Approvals and certificates**

UL approval	cULus Listed, General Purpose
CSA approval	cCSAus Listed, General Purpose
CCC approval	Products with a maximum operating voltage of $\leq 36$ V do not bear a CCC marking because they do not require approval.



Sensor face is flush with mounting surface.

Release date: 2012-11-15 15:40 Date of issue: 2012-11-15 911282\_eng.xml