



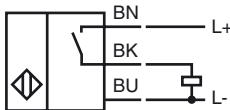
Model Number

NMB8-30GM55-E2-FE

Features

- Stainless steel sensing face
- Sensing range 8 mm
- 3-wire DC
- Ferrous targets

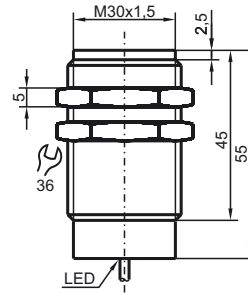
Connection



Accessories

AB-30
Mounting aid

Dimensions



Technical Data

General specifications

Switching element function	PNP	NO
Rated operating distance	s_n	8 mm
Installation	flush	
Output polarity	DC	
Assured operating distance	s_a	0 ... 6.48 mm
Actuating element	Ferrous targets	
Reduction factor r_{Al}	0	
Reduction factor r_{Cu}	0	
Reduction factor r_{304}	0.6 - 0.8	
Reduction factor r_{St37}	1	
Reduction factor r_{Brass}	0	

Nominal ratings

Operating voltage	U_B	10 ... 30 V DC
Switching frequency	f	10 Hz
Hysteresis	H	3 ... 15 typ. 10 %
Reverse polarity protection	yes	
Short-circuit protection	yes	
Voltage drop	U_d	≤ 2 V
Operating current	I_L	≤ 200 mA
Current consumption	< 14 mA	
Off-state current	I_r	≤ 10 μ A

Functional safety related parameters

MTTF _d	990 a
Mission Time (T _M)	20 a
Diagnostic Coverage (DC)	0 %

Indicators/operating means

Operating display	Dual LED Green: power Yellow: output
-------------------	--

Ambient conditions

Ambient temperature	-40 ... 70 °C (-40 ... 158 °F)
---------------------	--------------------------------

Mechanical specifications

Connection type	cable PUR , 2 m
Core cross-section	0.5 mm ²
Housing material	Stainless steel 1.4305 / AISI 303
Sensing face	Stainless steel 1.4305 / AISI 303
Protection degree	IP69K

Compliance with standards and directives

Standard conformity	
Standards	EN 60947-5-2:2007 IEC 60947-5-2:2007

Approvals and certificates

UL approval	cULus Listed, General Purpose
CSA approval	cCSAus Listed, General Purpose
CCC approval	Products with a maximum operating voltage of ≤ 36 V do not bear a CCC marking because they do not require approval.