



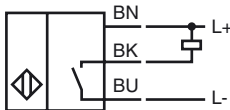
Model Number

NMB8-30GM55-E0-FE

Features

- Stainless steel sensing face
- Sensing range 8 mm
- 3-wire DC
- Ferrous targets

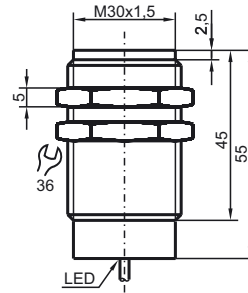
Connection



Accessories

AB-30
Mounting aid

Dimensions



Technical Data

General specifications

Switching element function		NPN	NO
Rated operating distance	s_n	8 mm	
Installation		flush	
Output polarity		DC	
Assured operating distance	s_a	0 ... 6.48 mm	
Actuating element		Ferrous targets	
Reduction factor r_{Al}		0	
Reduction factor r_{Cu}		0	
Reduction factor r_{304}		0.6 - 0.8	
Reduction factor r_{St37}		1	
Reduction factor r_{Brass}		0	

Nominal ratings

Operating voltage	U_B	10 ... 30 V DC	
Switching frequency	f	10 Hz	
Hysteresis	H	3 ... 15 typ. 10 %	
Reverse polarity protection		yes	
Short-circuit protection		yes	
Voltage drop	U_d	≤ 2 V	
Operating current	I_L	≤ 200 mA	
Current consumption		< 14 mA	
Off-state current	I_r	≤ 10 μ A	

Indicators/operating means

Operating display	Dual LED		
	Green: power		
	Yellow: output		

Ambient conditions

Ambient temperature	-40 ... 70 °C (-40 ... 158 °F)
---------------------	--------------------------------

Mechanical specifications

Connection type	cable PUR , 2 m
Core cross-section	0.5 mm ²
Housing material	Stainless steel 1.4305 / AISI 303
Sensing face	Stainless steel 1.4305 / AISI 303
Protection degree	IP69K

Compliance with standards and directives

Standard conformity	
Standards	EN 60947-5-2:2007 IEC 60947-5-2:2007

Approvals and certificates

UL approval	cULus Listed, General Purpose
CSA approval	cCSAus Listed, General Purpose
CCC approval	Products with a maximum operating voltage of ≤ 36 V do not bear a CCC marking because they do not require approval.