



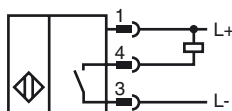
### Model Number

NBB5-18GM50-E0-C-V1

### Features

- 5 mm flush
- 3-wire DC
- Weld Immune

### Connection



Wire colors in accordance with EN 60947-5-2

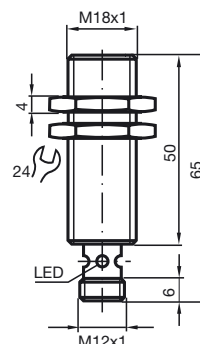
1	BN	(brown)
2	WH	(white)
3	BU	(blue)
4	BK	(black)

### Accessories

#### BF 18

Mounting flange, 18 mm

### Dimensions



### Technical Data

#### General specifications

Switching element function		NPN	NO
Rated operating distance	$s_n$	5 mm	
Installation		flush	
Output polarity		DC	
Assured operating distance	$s_a$	0 ... 4.05 mm	
Reduction factor $r_{A1}$		0.3	
Reduction factor $r_{Cu}$		0.2	
Reduction factor $r_{304}$		0.6	

#### Nominal ratings

Operating voltage	$U_B$	10 ... 30 V DC
Switching frequency	$f$	0 ... 800 Hz
Hysteresis	$H$	typ. 5%
Reverse polarity protection		reverse polarity protected
Short-circuit protection		pulsing
Voltage drop	$U_d$	$\leq 3$ V
Operating current	$I_L$	0 ... 200 mA
Off-state current	$I_r$	0 ... 0.5 mA typ. 0.1 $\mu$ A at 25 °C
No-load supply current	$I_0$	$\leq 15$ mA
Constant magnetic field	$B$	150 mT
Alternating magnetic field	$B$	150 mT
Indication of the switching state		Multihole-LED, yellow

#### Ambient conditions

Ambient temperature		-25 ... 70 °C (-13 ... 158 °F)
---------------------	--	--------------------------------

#### Mechanical specifications

Connection type	Device connector M12 x 1, 4-pin
Housing material	Brass, PTFE coated
Sensing face	PPS
Protection degree	IP67

#### Compliance with standards and directives

Standard conformity	
Standards	EN 60947-5-2:2007 IEC 60947-5-2:2007

#### Approvals and certificates

UL approval	cULus Listed, General Purpose
CSA approval	cCSAus Listed, General Purpose
CCC approval	Products with a maximum operating voltage of $\leq 36$ V do not bear a CCC marking because they do not require approval.