



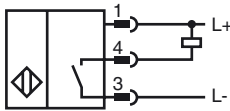
### Model Number

NBB10-30GM50-E0-C-V1

### Features

- 10 mm flush
- 3-wire DC
- Weld Immune

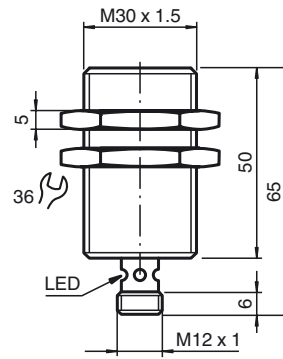
### Connection



Wire colors in accordance with EN 60947-5-2

1	BN	(brown)
2	WH	(white)
3	BU	(blue)
4	BK	(black)

### Dimensions



### Technical Data

#### General specifications

Switching element function		NPN	NO
Rated operating distance	$s_n$	10 mm	
Installation		flush	
Assured operating distance	$s_a$	0 ... 8.1 mm	
Reduction factor $r_{Al}$		0.3	
Reduction factor $r_{Cu}$		0.2	
Reduction factor $r_{304}$		0.6	

#### Nominal ratings

Operating voltage	$U_B$	10 ... 30 V DC	
Switching frequency	$f$	0 ... 10 Hz	
Hysteresis	H	typ. 5%	
Reverse polarity protection		reverse polarity protected	
Short-circuit protection		pulsing	
Voltage drop	$U_d$	$\leq 3$ V	
Operating current	$I_L$	0 ... 200 mA	
Off-state current	$I_r$	0 ... 0.5 mA typ. 0.1 $\mu$ A at 25 °C	
No-load supply current	$I_0$	$\leq 15$ mA	
Constant magnetic field	B	100 mT	
Alternating magnetic field	B	100 mT	
Indication of the switching state		Multihole-LED, yellow	

#### Ambient conditions

Ambient temperature		-25 ... 70 °C (-13 ... 158 °F)
---------------------	--	--------------------------------

#### Mechanical specifications

Connection type		Device connector M12 x 1, 4-pin
Housing material		Brass, PTFE coated
Sensing face		PPS
Protection degree		IP67

#### Compliance with standards and directives

Standard conformity		
Standards		EN 60947-5-2:2007 IEC 60947-5-2:2007

#### Approvals and certificates

UL approval		cULus Listed, General Purpose
CSA approval		cCSAus Listed, General Purpose
CCC approval		Products with a maximum operating voltage of $\leq 36$ V do not bear a CCC marking because they do not require approval.