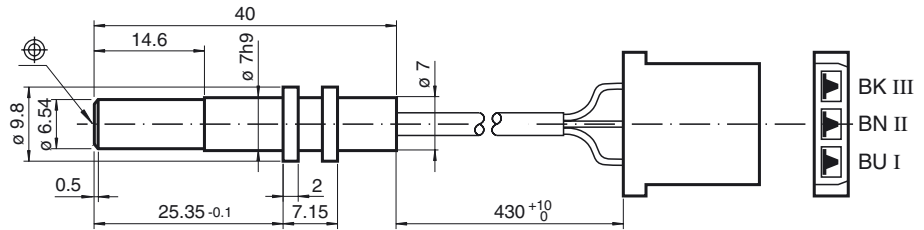


1.5 mm embeddable



General specifications	
Switching element function	NPN Make function
Rated operating distance s_n	1.4 mm
Installation	embeddable
Assured operating distance s_a	0 ... 1.13 mm
Nominal ratings	
Operating voltage U_B	6 ... 30 V
Switching frequency f	0 ... 500 Hz
Reverse polarity protection	Protected against reverse polarity
Short-circuit protection	pulsing
Voltage drop U_d	≤ 1 V
Operating current I_L	0 ... 160 mA
Off-state current I_r	0 ... 0.1 mA typ.
No-load supply current I_0	≤ 10 mA
Standard conformity	
Standards	EN 60947-5-2:2004
Ambient conditions	
Ambient temperature	-25 ... 70 °C (248 ... 343 K)
Mechanical specifications	
Connection type	PVC cable 3 x 0.14 mm ² with connector AMP-No. 925 015-0
Housing material	Stainless steel
Sensing face	POM
Protection degree	IP67

Connection type:

E / E0

