



CE

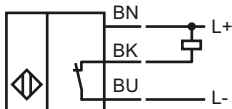
### Model Number

922LC1.5-B4N-Z475

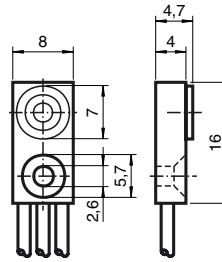
### Features

- 1.5 mm embeddable

### Connection



## Dimensions



## Technical Data

### General specifications

Switching element function		NPN	NC
Rated operating distance	$s_n$	1.5 mm	
Installation		embeddable	
Output polarity		DC	
Assured operating distance	$s_a$	0 ... 1.21 mm T1	

### Nominal ratings

Operating voltage	$U_B$	4.75 ... 30 V DC
Switching frequency	$f$	0 ... 1000 Hz
Voltage drop	$U_d$	1.5 V
Operating current	$I_L$	0 ... 100 mA
No-load supply current	$I_0$	5 mA
Indication of the switching state		NO

### Ambient conditions

Ambient temperature	-25 ... 70 °C (-13 ... 158 °F)
---------------------	--------------------------------

### Mechanical specifications

Connection type	flexible leads PVC, 50 mm
Core cross-section	3 x 0.12 mm <sup>2</sup>
Housing material	Polyamides
Protection degree	IP67