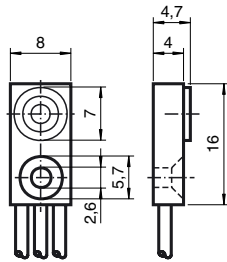


Basic series
1.5 mm embeddable



General specifications	
Switching element function	PNP NO
Rated operating distance s_n	1,5 mm
Installation	embeddable
Assured operating distance s_a	0 ... 1,21 mm
Nominal ratings	
Operating voltage U_B	4,75 ... 30 V DC
Switching frequency f	0 ... 1000 Hz
Voltage drop U_d	1,5 V
Operating current I_l	0 ... 100 mA
No-load supply current I_0	5 mA
Indication of the switching state	NO
Ambient conditions	
Ambient temperature	-10 ... 65 °C (263 ... 338 K)
Mechanical specifications	
Connection type	50 mm flexible lead
Core cross-section	3 x 0.08 mm ²
Housing material	Polyamides
Protection degree	IP67

Connection type:

E2

