



Model Number

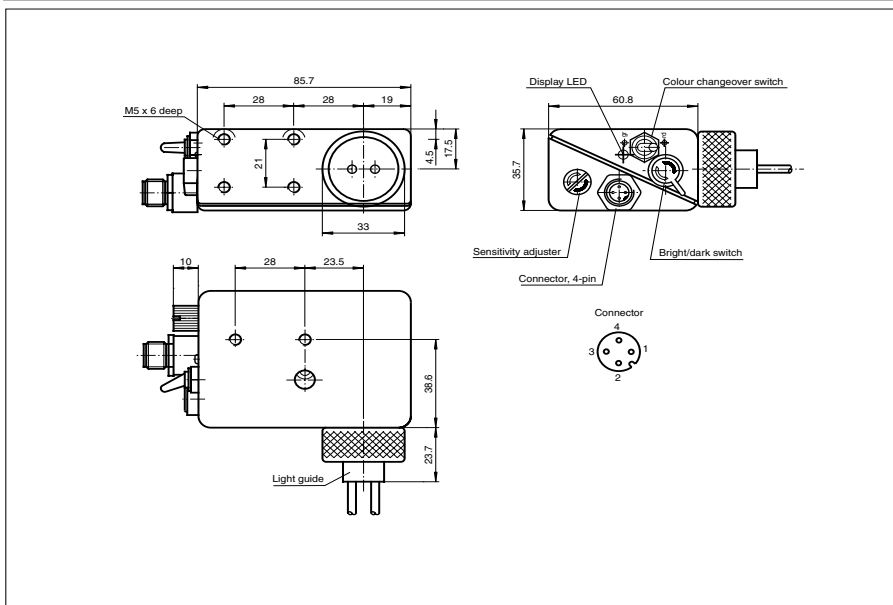
RL5-LL/37/92

Print mark contrast sensor for fibre optic connection with M12, 4-pin metal connector

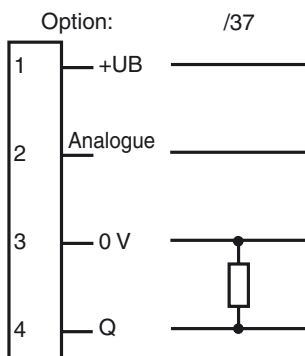
Features

- Diffuse mode sensor for recording any print mark
- For glass fibre optics
- Multiturn potentiometer for adjustment of the switching threshold
- 2 emitter colours, green und red, adjustable by switch
- Switch output with 10 kOhm pull-down resistance
- Sturdy, waterproof aluminium pressure moulded housing

Dimensions



Electrical connection



○ = Light on
● = Dark on

Release date: 2010-01-26 11:40 Date of issue: 2010-01-26 419668_ENG.xml

Technical data

General specifications

Detection range	see selection table for fibre optics
Light source	LED
Light type	Visible green/red switchable, modulated light
Approvals	CE

Indicators/operating means

Function display	LED green, lights up with receiver lit
Operating elements	light/dark switch, sensitivity adjuster, colour changeover switch

Electrical specifications

Operating voltage	U_B	10 ... 30 V DC
Ripple		10 %
No-load supply current	I_0	85 mA

Output

Switching type	Light/dark ON, switchable	
Signal output	1 pnp, short-circuit proof	
Switching voltage	max. 30 V DC	
Switching current	max. 300 mA	
Switching frequency	f	5 kHz
Response time		100 μ s

Standard conformity

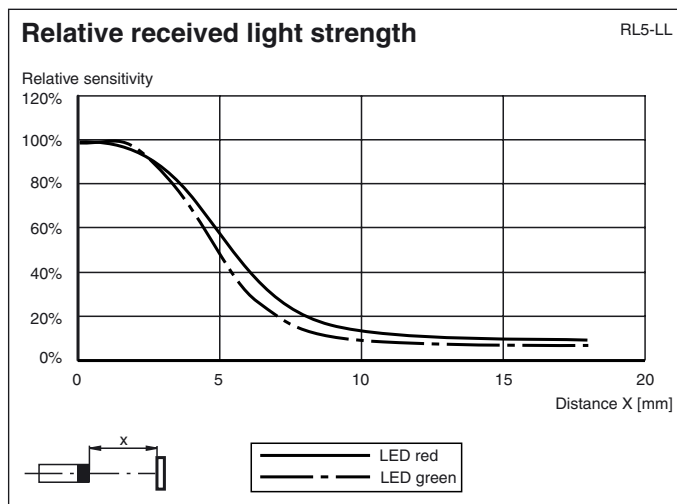
Standards	EN 60947-5-2
-----------	--------------

Ambient conditions

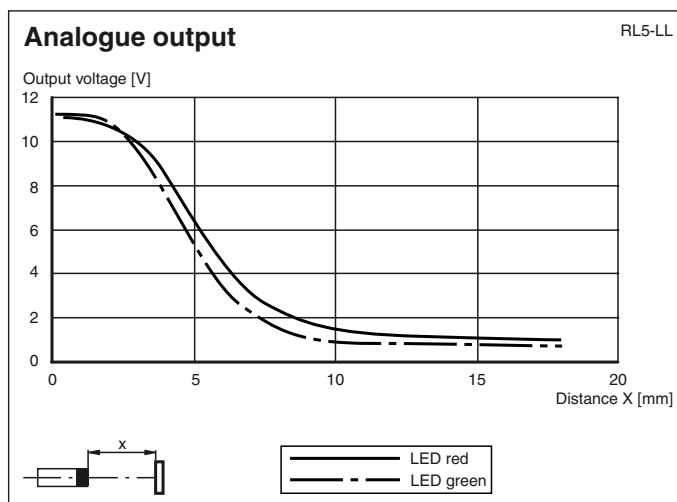
Ambient temperature	-20 ... 60 °C (253 ... 333 K)
Storage temperature	-20 ... 75 °C (253 ... 348 K)

Mechanical specifications

Protection degree	IP67
Connection	M12 connector, 4-pin
Material	
Housing	aluminium diecasting
Mass	330 g



Curves/Diagrams



Release date: 2010-01-26 11:40 Date of issue: 2010-01-26 419668_ENG.xml

Selection table for fibre

	Operating temperature in °C	Model number	Detection range in mm
Glass fibre optics reflex with PVC coating	85	LCR30-7/1-1.0-Z1	1.5
		LCR30-7/1-1.5-Z1	1.5

Adapter



Release date: 2010-01-26 11:40 Date of issue: 2010-01-26 419668_ENG.xml

Subject to modifications without notice

Pepperl+Fuchs Group
www.pepperl-fuchs.com

USA: +1 330 486 0001
fa-info@us.pepperl-fuchs.com

Germany: +49 621 776-4411
fa-info@pepperl-fuchs.com

Copyright Pepperl+Fuchs

Singapore: +65 6779 9091
fa-info@sg.pepperl-fuchs.com