



MLV40-LL-IR/48/115

Lichtleitergerät für Glasfaserlichtleiter

MLV40-LL-IR/48/115

mit 2 m Festkabel



- ◆ **Robustes Aluminiumgehäuse**
- ◆ **Lichtleiteradapter mit Schnellspannverschluss**
- ◆ **Geringer Platzbedarf**
- ◆ **Umfangreiches Lichtleiterprogramm als Zubehör**

Allgemeine Daten

| | |
|------------------|--|
| Tastbereich | abhängig vom verwendeten Lichtleiter s. Auswahltabelle Lichtleiter |
| Lichtsender | IRED |
| Zulassungen | CE, cULus |
| Einstellbereich | abhängig vom verwendeten Lichtleiter |
| Lichtart | infrarot, Wechsellicht |
| Fremdlichtgrenze | 50000 Lux |

Anzeigen/Bedienelemente

| | |
|------------------|--|
| Funktionsanzeige | LED gelb, blinkt bei Unterschreiten der Funktionsreserve |
| Bedienelemente | Empfindlichkeitseinsteller |

Elektrische Daten

| | |
|---------------------|----------------|
| Betriebsspannung | 10 ... 30 V DC |
| Welligkeit | 10 % |
| Leerlaufstrom I_0 | 40 mA |

Ausgang

| | |
|--------------------|--|
| Schaltungsart | hell-/dunkelschaltend |
| Signalausgang | 2 npn antivalent, kurzschlussfest, verpolgeschützt |
| Schaltspannung | max. 30 V DC |
| Schaltstrom | max. 200 mA |
| Schaltfrequenz f | 100 Hz |
| Stromaufnahme | ≤ 40 mA |
| Ansprechzeit | 5 ms |

Normenkonformität

| | |
|--------|--------------|
| Normen | EN 60947-5-2 |
|--------|--------------|

Umgebungsbedingungen

| | |
|---------------------|-------------------------------|
| Umgebungstemperatur | -20 ... 60 °C (253 ... 333 K) |
| Lagertemperatur | -20 ... 75 °C (253 ... 348 K) |

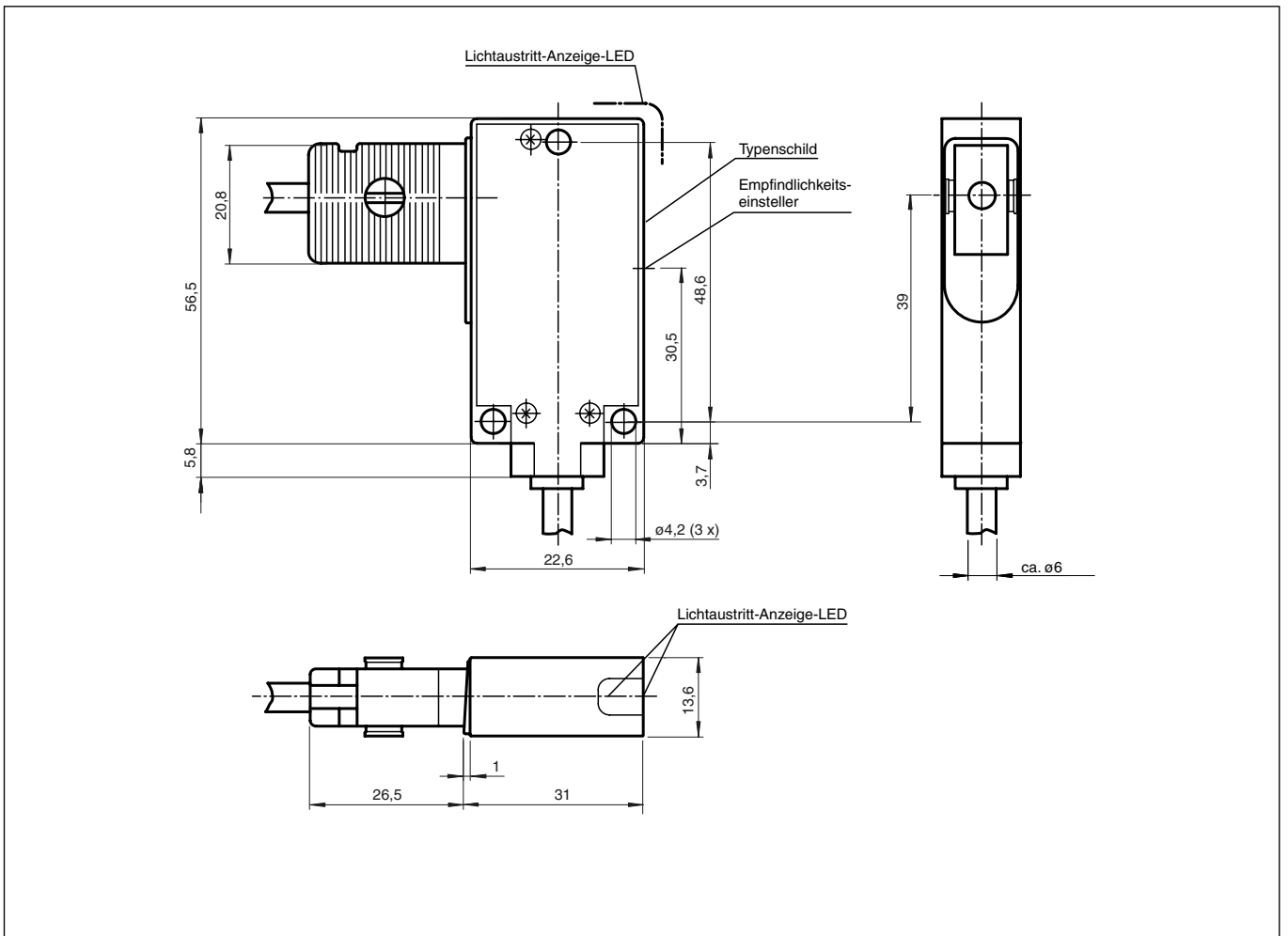
Mechanische Daten

| | |
|---------------|---------------|
| LWL-Adapter | 04 |
| Schutzart | IP65 |
| Anschluss | Festkabel 2 m |
| Material | |
| Gehäuse | Aluminium |
| Lichtaustritt | Glas |
| Masse | 100 g |



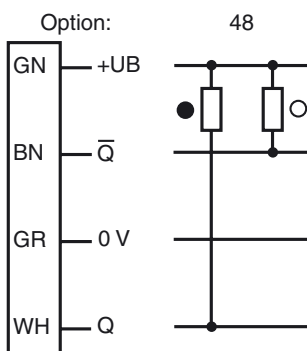
MLV40-LL-IR/48/115

Abmessungen



Elektrischer Anschluß

Veröffentlichungsdatum: 2005-09-12 14:59 Ausgabedatum: 2005-09-12 419650_GER.xml



○ = Hellschaltung, ● = Dunkelschaltung

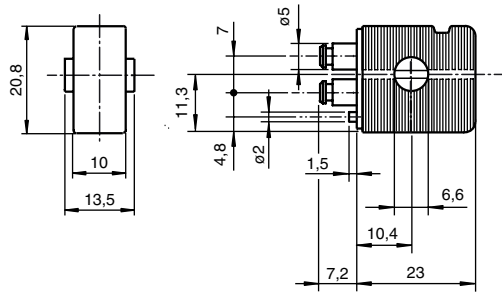
Auswahltabelle Lichtleiter

| | Bezeichnung | Tastweite in mm mit | | | Abbildung |
|--|------------------------|---------------------|-------------|---------|-----------|
| | | MLV40-LL-IR | MLV40-LL-RT | SU14-LL | |
| Glasfaserlichtleiter - Einweg mit PVC-Ummantelung | LCE04-1,1-0,5-WC3 | 100 | 50 | 100 | 1 |
| | LCE04-1,1-1,5-WC3 | 110 | 60 | 80 | 1 |
| | LCE04-1,6-0,5-WC3 | 280 | 80 | 160 | 2 |
| | LCE04-1,6-1,0-WC3 | 200 | 60 | 120 | 2 |
| | LCE04-1,6-1,0-Z1 | 280 | 80 | 160 | 3 |
| | LCE04-1,6-1,0-G | 280 | 80 | 160 | 4 |
| Glasfaserlichtleiter - Reflex mit PVC-Ummantelung | LCR04-1,1-0,5-WC3 | 50 | 25 | 40 | 5 |
| | LCR04-1,6-1,0-WC3 | 100 | 50 | 80 | 6 |
| | LCR04-1,6-0,5-WC2 | 50 | 20 | 40 | 7 |
| | LCR04-1,6-0,5-Z1 | 80 | 40 | 80 | 8 |
| | LCR04-1,6-1,0-Z1 | 100 | 50 | 80 | 8 |
| | LCR04-1,6-1,0-G | 100 | 50 | 80 | 9 |
| Glasfaserlichtleiter - Einweg mit Metall-Silikon-Ummantelung | LLE04-1,6-1,0-G | 280 | 40 | 160 | 10 |
| | LLE04-1,6-1,0-Z1 | 280 | 40 | 160 | 11 |
| | LLE04-1,6-1,0-WC3 | 280 | 35 | 160 | 12 |
| | LLE04-1,6-1,0-WC15 | 250 | 35 | 140 | 13 |
| Glasfaserlichtleiter- Reflex mit Metall-Silikon-Ummantelung | LLR04-1,6-0,5-G | 90 | 40 | 80 | 14 |
| | LLR04-1,6-1,0-G | 100 | 50 | 80 | 14 |
| | LLR04-1,6-0,5-QW1x4 | 80 | 35 | 60 | 18 |
| | LLR04-1,6-1,0-QW1x4 | 60 | 40 | 40 | 18 |
| | LLR04-1,6-0,5-WC3 | 80 | 35 | 60 | 15 |
| | LLR04-1,6-1,0-WC3 | 100 | 50 | 80 | 15 |
| | LLR04-1,9-1,0-WC5 | 100 | 50 | 70 | 16 |
| | LLR04-1,6-1,0-Z1 | 110 | 50 | 80 | 17 |
| Glasfaserlichtleiter - Einweg mit Metall-Ummantelung | LME04-0,8-0,5-Z1 | 80 | 40 | 60 | 19 |
| | LME04-0,8-1,0-Z1 | 60 | 30 | 40 | 19 |
| | LME04-1,6-0,5-Z1 | 160 | 80 | 120 | 20 |
| | LME04-1,9-0,5-Z1 | 200 | 100 | 150 | 20 |
| | LME04-1,6-1,0-WC3 | 120 | 60 | 80 | 23 |
| | LME04-0,8-0,5-WC4 | 70 | 35 | 45 | 21 |
| | LME04-1,6-1,5-WC4 | 120 | 60 | 80 | 22 |
| Glasfaserlichtleiter - Reflex mit Metall-Ummantelung | LMR04-0,5-0,5-WC4 | 6 | 5 | 5 | 24 |
| | LMR04-0,5-0,5-Z0 | 7 | 6 | 5 | 26 |
| | LMR04-0,5-0,5-Z1 | 7 | 6 | 5 | 25 |
| | LMR04-1,6-0,5-Z1 | 80 | 35 | 60 | 27 |
| | LMR04-1,9-0,5-Z1 | 90 | 40 | 70 | 28 |
| | LMR04-0,6-0,5-QW0,25/2 | 5 | 3 | 4 | 29 |

Andere Längen und Endstücke auf Anfrage

MLV40-LL-IR/48/115

Adapter



Einweg



Reflex



Abb. 1

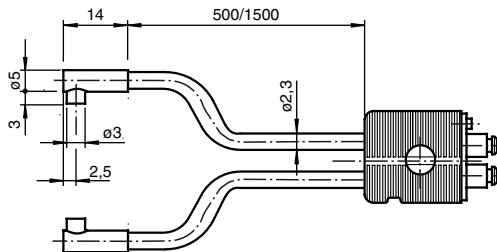


Abb. 2

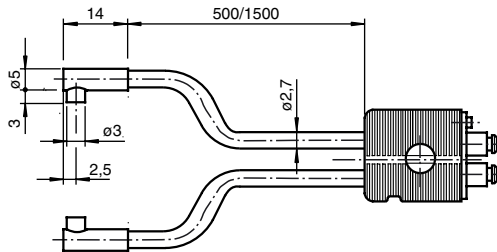


Abb. 3

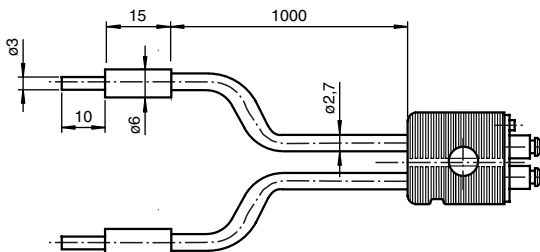


Abb. 4

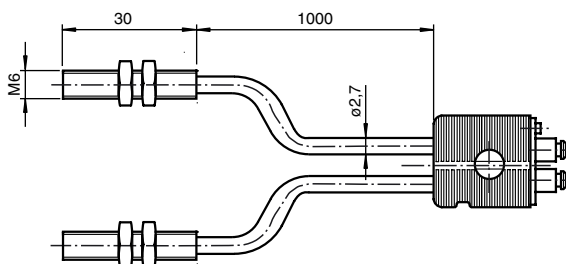


Abb. 5

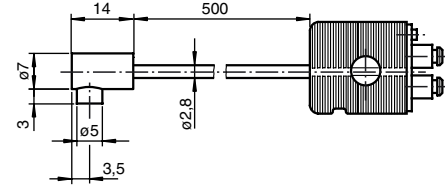


Abb. 6

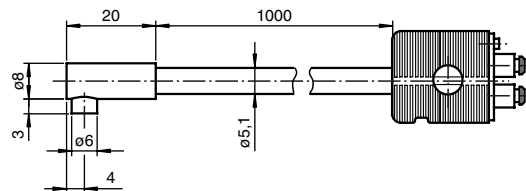


Abb. 7

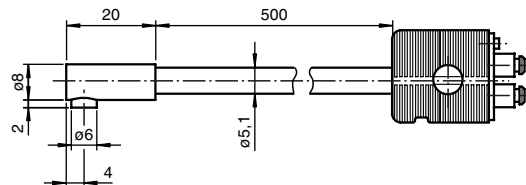


Abb. 8

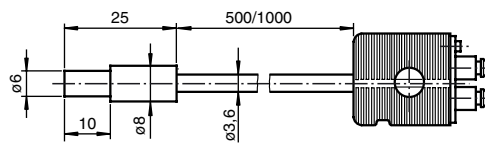
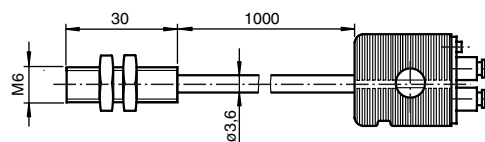


Abb. 9



Veröffentlichungsdatum: 2005-09-12 14:59 Ausgabedatum: 2005-09-12 419650_GER.xml

MLV40-LL-IR/48/115

Abb. 10

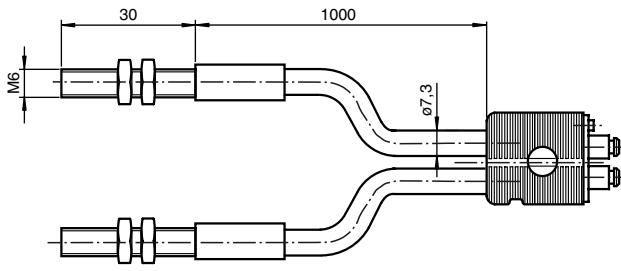


Abb. 15

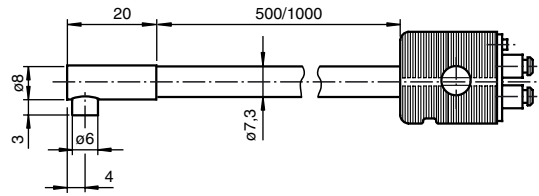


Abb. 11

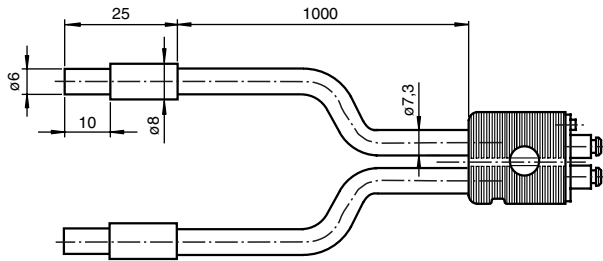


Abb. 16

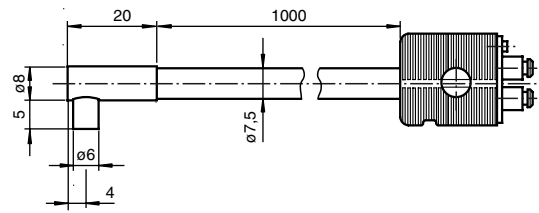


Abb. 12

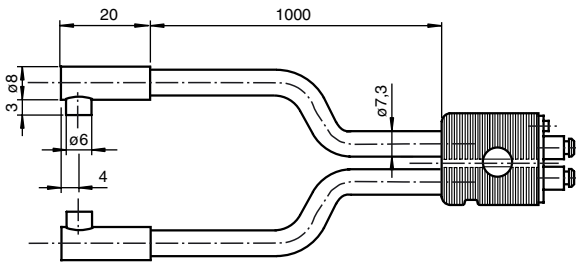


Abb. 17

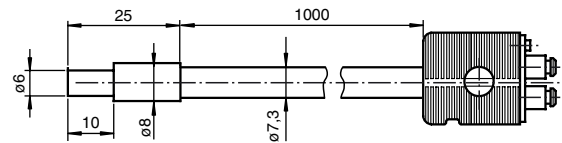


Abb. 13

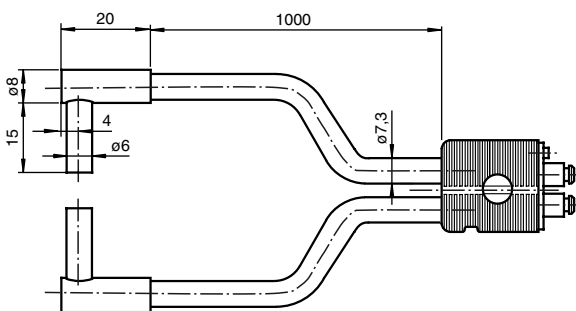


Abb. 18

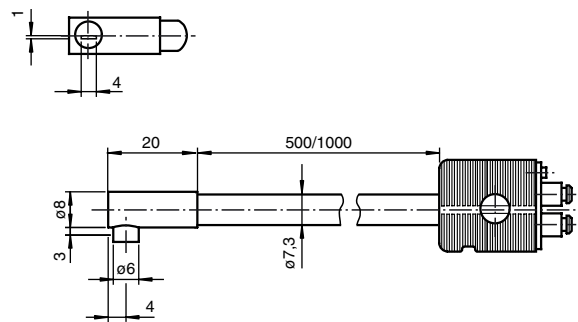


Abb. 14

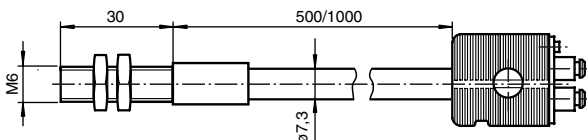


Abb. 19

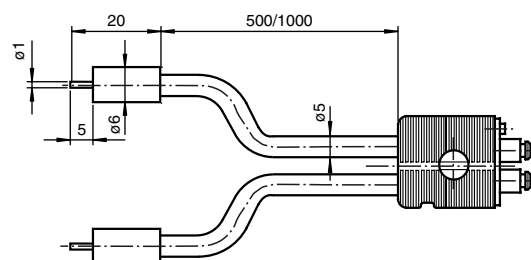


Abb. 20

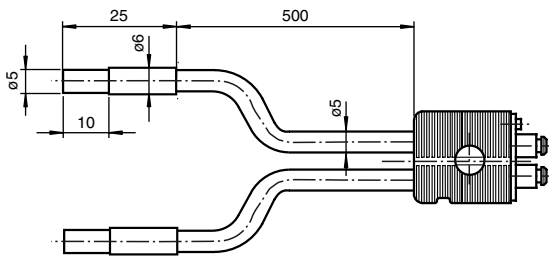


Abb. 25

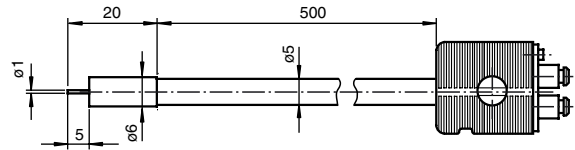


Abb. 21

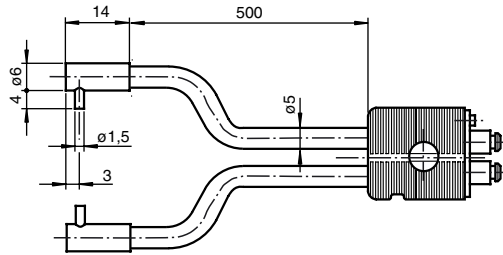


Abb. 26

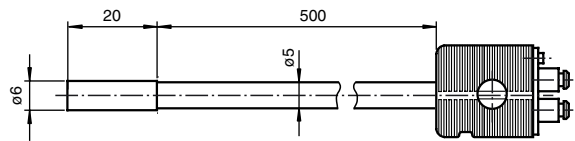


Abb. 22

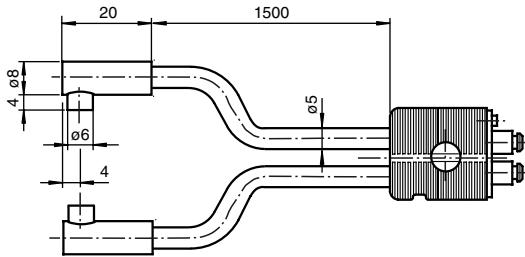


Abb. 27

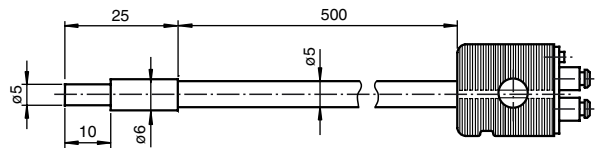


Abb. 23

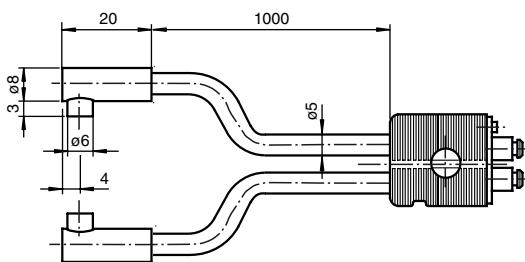


Abb. 28

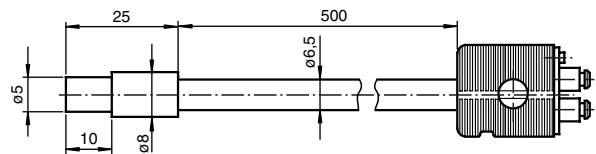


Abb. 24

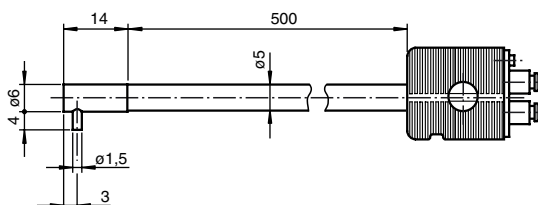


Abb. 29

