



**Model Number**

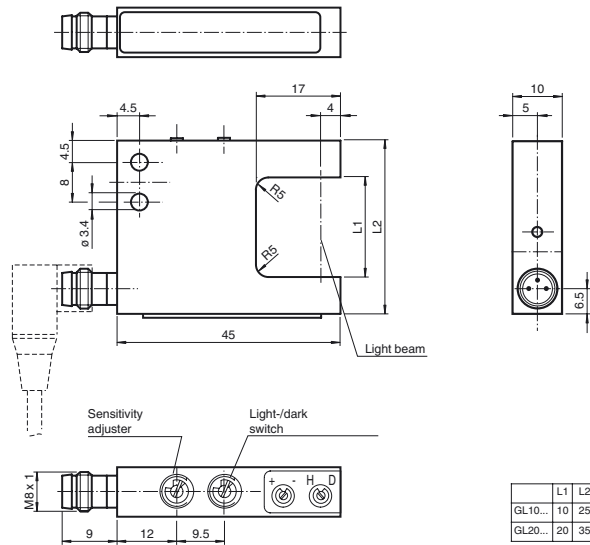
**GL20**

Photoelectric slot sensor with 3-pin, M8 x 1 connector

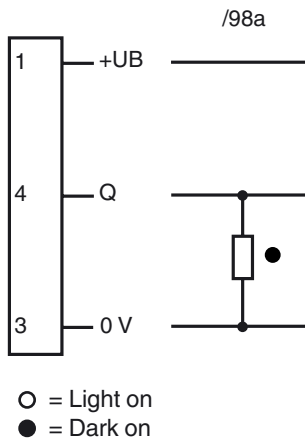
**Features**

- High switching frequency
- Sensitivity adjuster and light/dark switch as standard features of this series
- Infrared light
- Sturdy aluminum housing
- Protection degree IP67

**Dimensions**



**Electrical connection**



**Pinout**



Release date: 2011-09-15 16:33 Date of issue: 2011-09-15 418729\_eng.xml

Subject to modifications without notice

Pepperl+Fuchs Group  
www.pepperl-fuchs.com

USA: +1 330 486 0001  
fa-info@us.pepperl-fuchs.com

Germany: +49 621 776-4411  
fa-info@pepperl-fuchs.com

Copyright Pepperl+Fuchs  
Singapore: +65 6779 9091  
fa-info@sg.pepperl-fuchs.com

**Technical data****General specifications**

Light source	IRE D
Light type	modulated infrared light
Tests	EN 60947-5-2
Marking	CE
Target size	0.3 mm
Fork width	20 mm
Ambient light limit	100000 Lux

**Indicators/operating means**

Function display	LED red in the connector plug, illuminates with free light beam
Controls	Sensitivity adjuster, light/dark switch

**Electrical specifications**

Operating voltage	$U_B$	10 ... 30 V DC
Ripple		10 %
No-load supply current	$I_0$	15 mA

**Output**

Switching type	light/dark on	
Signal output	1 PNP output, short-circuit protected, protected from reverse polarity, open collector	
Switching voltage	max. 30 V DC	
Switching current	max. 200 mA	
Switching frequency	$f$	1000 Hz
Response time		0.5 ms

**Ambient conditions**

Ambient temperature	-20 ... 60 °C (-4 ... 140 °F)
Storage temperature	-20 ... 75 °C (-4 ... 167 °F)

**Mechanical specifications**

Protection degree	IP67
Connection	M8 connector, 3-pin
Material	
Housing	aluminum
Optical face	glass
Mass	30 g

**Accessories****V3-GM-2M-PUR**

Cable socket, M8, 3-pin, PUR cable

Additional accessories can be found in the Internet.