



GL121-2362

Fork type light beam switch

GL121-2362

with 3-pin, M8 connector

CE



- ◆ High switching frequency
- ◆ Sensitivity adjuster and light/dark switch as standard features of this series
- ◆ Infrared light
- ◆ Sturdy aluminium housing
- ◆ Protection degree IP67

Release date: 2005-08-17 15:16 Date of issue: 2005-10-05 418724_ENG.xml

General specifications

Light source	IRED
Tests	EN 60947-5-2
Marking	CE
Obstacle size	2 mm
Fork width	121 mm
Light type	infrared, modulated light
Ambient light limit	60000 Lux

Indicators/operating means

Function display	Red LED, lights when the receiver is not illuminated (in the connection plug)
Operating elements	Sensitivity adjuster, light/dark switch

Electrical specifications

Operating voltage	10 ... 30 V DC
Ripple	10 %
No-load supply current I_0	20 mA

Output

Switching type	light/dark switching
Signal output	1 PNP output, short-circuit proof, protected from reverse polarity, open collector
Switching voltage	max. 30 V DC
Switching current	max. 200 mA
Switching frequency f	70 Hz
Response time	5 ms

Ambient conditions

Ambient temperature	-20 ... 60 °C (253 ... 333 K)
Storage temperature	-20 ... 75 °C (253 ... 348 K)

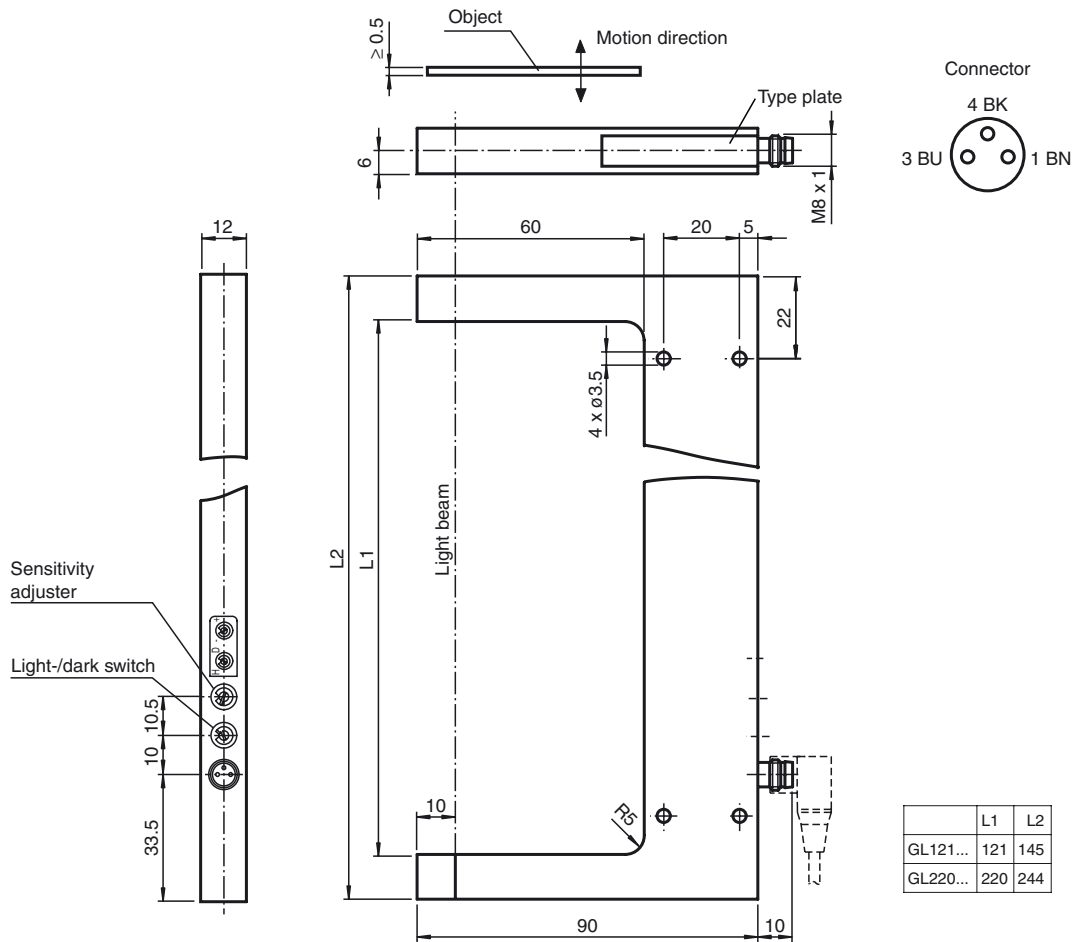
Mechanical specifications

Protection degree	IP67
Connection	M8 connector, 3-pin
Material	
Housing	aluminium
Optical face	glass
Mass	160 g

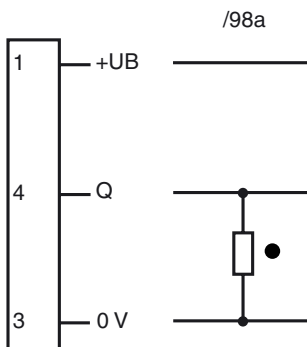


GL121-2362

Dimensions



Electrical connection



○ = light on, ● = dark on

Release date: 2005-08-17 15:16 Date of issue: 2005-10-05 418724_ENG.xml