



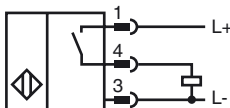
## Model Number

NRB8-18GM50-E2-C-V1-EXG

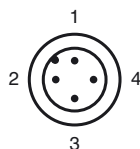
## Features

- 8 mm embeddable
- Reduction factor = 1
- Weld Immune
- Magnetic field resistant

## Connection



## Pinout



Wire colors in accordance with EN 60947-5-2

1	BN	(brown)
2	WH	(white)
3	BU	(blue)
4	BK	(black)

## Accessories

### BF 18

Mounting flange, 18 mm

### V1-G

4-pin, M12 female field-attachable connector

### V1-W

4-pin, M12 female field-attachable connector

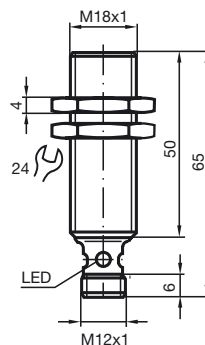
### V1-G-2M-PUR

Cable socket, M12, 4-pin, PUR cable

### V1-W-2M-PUR

Cable socket, M12, 4-pin, PUR cable

## Dimensions



## Technical Data

### General specifications

Switching element function	PNP	NO
Installation	embeddable	
Output polarity	switched high	
Assured operating distance	$s_a$	0 ... 6.48 mm Only for use in mounting aid EXG-18
Reduction factor $r_{AI}$	1	
Reduction factor $r_{Cu}$	1	
Reduction factor $r_{304}$	1	
Reduction factor $r_{Si37}$	1	

### Nominal ratings

Operating voltage	$U_B$	10 ... 30 V
Switching frequency	$f$	0 ... 600 Hz
Hysteresis	$H$	typ. 5 %
Reverse polarity protected	reverse polarity protected	
Short-circuit protection	pulsing	
Voltage drop	$U_d$	$\leq 3$ V
Operating current	$I_L$	0 ... 200 mA
Off-state current	$I_r$	0 ... 0.5 mA typ. 0.1 $\mu$ A at 25 °C
No-load supply current	$I_0$	$\leq 15$ mA
Constant magnetic field	$B$	200 mT
Alternating magnetic field	$B$	200 mT
Indication of the switching state	Multihole-LED, yellow	

### Functional safety related parameters

MTTF <sub>d</sub>	1360 a
Mission Time ( $T_M$ )	20 a
Diagnostic Coverage (DC)	0 %

### Ambient conditions

Ambient temperature	-25 ... 70 °C (-13 ... 158 °F)
Storage temperature	-40 ... 85 °C (-40 ... 185 °F)

### Mechanical specifications

Connection type	Device connector M12 x 1 , 4-pin
Housing material	brass, PTFE coated
Sensing face	Ryton R4
Protection degree	IP67
Note	Only for use in mounting aid EXG-18

### Compliance with standards and directives

Standard conformity	
Standards	EN 60947-5-2:2007 IEC 60947-5-2:2007

### Approvals and certificates

Protection class	II
Rated insulation voltage	$U_i$ 60 V
Design-impulse-voltage withstand	$U_{imp}$ 800 V
UL approval	cULus Listed, General Purpose
CSA approval	cCSAus Listed, General Purpose
CCC approval	Products with a maximum operating voltage of $\leq 36$ V do not bear a CCC marking because they do not require approval.