



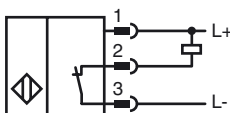
Model Number

NEN10-12GM50-E1-V1

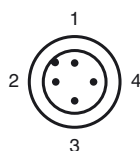
Features

- Increased operating distance
- 10 mm not embeddable

Connection



Pinout



Wire colors in accordance with EN 60947-5-2

1	BN	(brown)
2	WH	(white)
3	BU	(blue)
4	BK	(black)

Accessories

EXG-12

Quick mounting bracket with dead stop

BF 12

Mounting flange, 12 mm

V1-G

4-pin, M12 female field-attachable connector

V1-W

4-pin, M12 female field-attachable connector

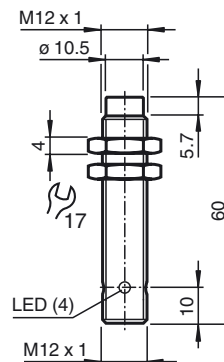
V1-G-2M-PUR

Cable socket, M12, 4-pin, PUR cable

V1-W-2M-PUR

Cable socket, M12, 4-pin, PUR cable

Dimensions



Technical Data

General specifications

Switching element function	NPN	NC
Rated operating distance	s_n	10 mm
Installation		not embeddable
Output polarity		DC
Assured operating distance	s_a	0 ... 8.1 mm
Actuating element		structural steel, e. g. 1.0037, SR235JR (formerly St37-2) 30 mm x 30 mm x 1 mm
Reduction factor r_{Al}		0.45
Reduction factor r_{Cu}		0.4
Reduction factor r_{304}		0.75
Reduction factor r_{Brass}		0.45

Nominal ratings

Installation conditions	
A	in steel 1.0037 (St37): 10 mm
B	16 mm
C	30 mm
F	42 mm
Operating voltage	U_B 10 ... 30 V DC
Switching frequency	f 0 ... 600 Hz
Hysteresis	H 0.06 ... 1 mm
Reverse polarity protected	yes
Short-circuit protection	pulsing
Overload resistance	yes
Wire breakage protection	yes
Surge suppression	yes
Ripple	10 %
Voltage drop	U_d ≤ 2 V
Repeat accuracy	0.3 mm
Operating current	I_L 0 ... 200 mA, above 70°C ≤ 150 mA
Off-state current	I_r ≤ 10 μ A
No-load supply current	I_0 ≤ 15 mA
Indication of the switching state	LED, yellow

Functional safety related parameters

MTTF _d	1740 a
Mission Time (T _M)	20 a
Diagnostic Coverage (DC)	0 %

Ambient conditions

Ambient temperature	-25 ... 85 °C (-13 ... 185 °F)
Storage temperature	-40 ... 85 °C (-40 ... 185 °F)

Mechanical specifications

Connection type	Device connector M12 x 1, 4-pin
Housing material	brass, nickel-plated
Sensing face	PBT
Protection degree	IP67
Mass	20 g
Tightening torque, fastening screws	max. 10 Nm

Compliance with standards and directives

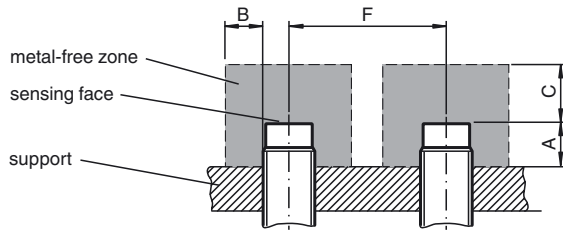
Standard conformity	
Standards	EN 60947-5-2:2007 IEC 60947-5-2:2007

Approvals and certificates

UL approval	cULus Listed, General Purpose
CCC approval	Products with a maximum operating voltage of ≤ 36 V do not bear a CCC marking because they do not require approval.

Release date: 2012-01-23 16:24 Date of issue: 2012-02-13 23:17:22_eng.xml

Installation conditions



Release date: 2012-01-23 16:24 Date of issue: 2012-02-13 231722_eng.xml