



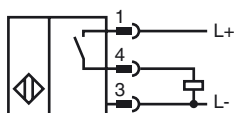
Model Number

NBB2-8GM40-E2-0,3M-V3

Features

- 2 mm embeddable
- Increased operating distance

Connection



Pinout



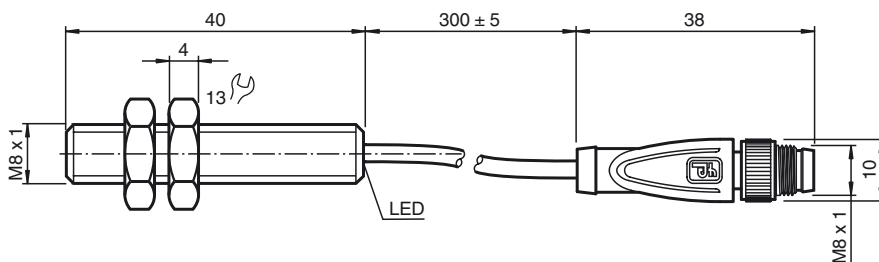
Wire colors in accordance with EN 60947-5-2

1	BN
3	BU
4	BK

Accessories

- BF 8**
Mounting flange, 8 mm
- EXG-08**
Quick mounting bracket with dead stop

Dimensions



Technical Data

General specifications			
Switching element function		PNP	NO
Rated operating distance	s_n	2 mm	
Installation		embeddable	
Output polarity		DC	
Assured operating distance	s_a	0 ... 1.62 mm	
Reduction factor r_{Al}		0.45	
Reduction factor r_{Cu}		0.4	
Reduction factor r_{V2A}		0.75	
Nominal ratings			
Operating voltage	U_B	10 ... 30 V	
Switching frequency	f	0 ... 3000 Hz	
Hysteresis	H	typ. 5%	
Reverse polarity protected		reverse polarity protected	
Short-circuit protection		pulsing	
Voltage drop	U_d	≤ 3 V	
Operating current	I_L	0 ... 100 mA	
Off-state current	I_r	0 ... 0.5 mA typ. 0.1 μ A at 25 °C	
No-load supply current	I_0	≤ 15 mA	
Indication of the switching state		LED, yellow	
Functional safety related parameters			
MTTF _d		2790 a	
Mission Time (T _M)		20 a	
Diagnostic Coverage (DC)		0 %	
Ambient conditions			
Ambient temperature		-25 ... 70 °C (-13 ... 158 °F)	
Mechanical specifications			
Connection type		Cable connector M8 x 1 , 3-pin with PVC cable 300 mm	
Core cross-section		0.14 mm ²	
Housing material		brass, nickel-plated	
Sensing face		LCP	
Protection degree		IP67	
Compliance with standards and directives			
Standard conformity			
Standards		EN 60947-5-2:2007 IEC 60947-5-2:2007	
Approvals and certificates			
UL approval		cULus Listed, General Purpose	
CSA approval		cCSAus Listed, General Purpose	
CCC approval		Products with a maximum operating voltage of ≤ 36 V do not bear a CCC marking because they do not require approval.	

Release date: 2010-11-16 13:52 Date of issue: 2010-11-17 22:6393_ENG.xml