



CE

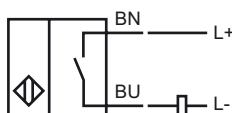
Model Number

NBB3-V3-Z4-Y222709

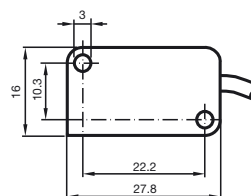
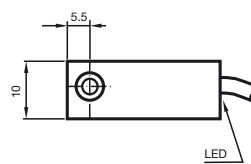
Features

- Basic series
- 3 mm embeddable

Connection



Dimensions



Technical Data

General specifications

Switching element function	DC	NO
Rated operating distance	s_n	3 mm (approx. 3.5 mm at 85 °C [185 °F])
Installation	embeddable	
Output polarity	DC	
Assured operating distance	s_a	0 ... 2.4 mm
Reduction factor r_{AI}	0.4	
Reduction factor r_{Cu}	0.3	
Reduction factor r_{V2A}	0.8	

Nominal ratings

Operating voltage	U_B	5 ... 60 V
Switching frequency	f	0 ... 2000 Hz
Hysteresis	H	typ. 0.2 mm
Reverse polarity protected	reverse polarity protected	
Short-circuit protection	no	
Voltage drop	U_d	≤ 5 V
Operating current	I_L	4 ... 100 mA
Lowest operating current	I_m	4 mA
Off-state current	I_r	0 ... 1 mA typ. 0.7 mA
Indication of the switching state	LED, yellow	

Limit data

Tightening torque, fastening screws	0.4 Nm
-------------------------------------	--------

Ambient conditions

Ambient temperature	-25 ... 85 °C (-13 ... 185 °F)
---------------------	--------------------------------

Mechanical specifications

Connection type	
Core cross-section	0.14 mm ²
Housing material	PBT
Sensing face	PBT
Protection degree	IP67

Compliance with standards and directives

Standard conformity	
Standards	EN 60947-5-2:2007 IEC 60947-5-2:2007