



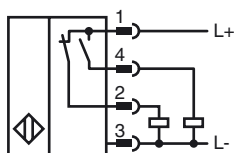
Model Number

NJ10-30GM50-A2-V1

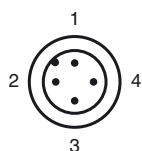
Features

- Stainless steel housing
- 10 mm flush

Connection



Pinout



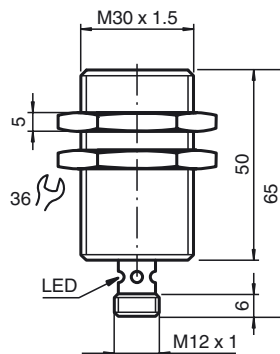
Wire colors in accordance with EN 60947-5-2

1	BN	(brown)
2	WH	(white)
3	BU	(blue)
4	BK	(black)

Accessories

- BF 30**
Mounting flange, 30 mm
- EXG-30**
Quick mounting bracket with dead stop
- V1-G**
4-pin, M12 female field-attachable connector
- V1-W**
4-pin, M12 female field-attachable connector
- V1-G-2M-PUR**
Cable socket, M12, 4-pin, PUR cable
- V1-W-2M-PUR**
Cable socket, M12, 4-pin, PUR cable

Dimensions



Technical Data

General specifications			
Switching element function		PNP	NO/NC
Rated operating distance	s_n	10 mm	
Installation		flush	
Output polarity		DC	
Assured operating distance	s_a	0 ... 8.1 mm	
Reduction factor r_{AI}		0.2	
Reduction factor r_{Cu}		0.15	
Reduction factor r_{304}		0.6	
Nominal ratings			
Operating voltage	U_B	10 ... 60 V	
Switching frequency	f	0 ... 300 Hz	
Hysteresis	H	typ. 5 %	
Reverse polarity protection		reverse polarity protected	
Short-circuit protection		pulsing	
Voltage drop	U_d	≤ 3 V	
Operating current	I_L	0 ... 400 mA	
No-load supply current	I_0	≤ 15 mA	
Indication of the switching state		Multihole-LED, rear	
Functional safety related parameters			
MTTF _d		1190 a	
Mission Time (T_M)		20 a	
Diagnostic Coverage (DC)		0 %	
Ambient conditions			
Ambient temperature		-25 ... 70 °C (-13 ... 158 °F)	
Mechanical specifications			
Connection type		Device connector M12 x 1, 4-pin	
Housing material		Stainless steel 1.4305 / AISI 303	
Sensing face		PBT	
Protection degree		IP67	
Compliance with standards and directives			
Standard conformity			
Standards		EN 60947-5-2:2007	
		IEC 60947-5-2:2007	
Approvals and certificates			
UL approval		cULus Listed, General Purpose	
CSA approval		cCSAus Listed, General Purpose	

Release date: 2013-01-08 12:07 Date of issue: 2013-01-08 222514_eng.xml