



### Model Number

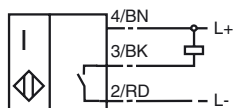
NBB5-F33M-E0-Y217757

### Features

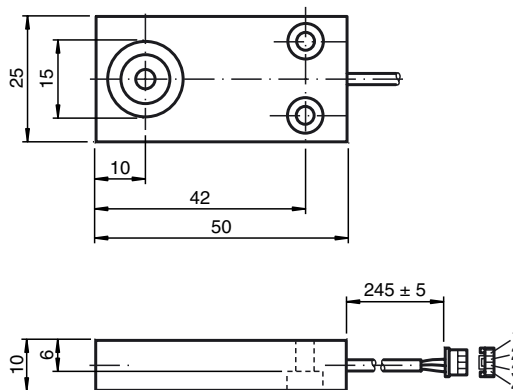
- Basic series
- 5 mm embeddable
- Metal housing

### Connection

E/E0



### Dimensions



### Technical Data

#### General specifications

Switching element function	NPN	NO
Rated operating distance	$s_n$	5 mm
Installation	embeddable	
Output polarity	DC	
Assured operating distance	$s_a$	0 ... 4.05 mm
Reduction factor $r_{Al}$	0.3	
Reduction factor $r_{Cu}$	0.2	
Reduction factor $r_{V2A}$	0.6	

#### Nominal ratings

Operating voltage	$U_B$	10 ... 30 V
Switching frequency	$f$	0 ... 500 Hz
Hysteresis	$H$	typ. 5 %
Reverse polarity protected	reverse polarity protected	
Short-circuit protection	pulsing	
Voltage drop	$U_d$	$\leq 3$ V
Operating current	$I_L$	0 ... 200 mA
Off-state current	$I_r$	0 ... 0.5 mA typ. 0.1 $\mu$ A at 25 °C
No-load supply current	$I_0$	$\leq 15$ mA
Indication of the switching state	LED	

#### Ambient conditions

Ambient temperature	-25 ... 70 °C (-13 ... 158 °F)
---------------------	--------------------------------

#### Mechanical specifications

Connection type	0.24 m, PVC cable with socket AMP-CT/RM200, 4 pin
Core cross-section	AWG 26
Housing material	metal
Sensing face	PBT
Protection degree	IP67

#### Compliance with standards and directives

Standard conformity	
Standards	EN 60947-5-2:2007 IEC 60947-5-2:2007

#### Approvals and certificates

UL approval	cULus Listed, General Purpose
CSA approval	cCSAus Listed, General Purpose