



Model Number

VOS410-BIS-60-WH

Sheet inspection sensor for monitoring print by comparing stored images or barcode evaluation, right angle version

Features

- Reliable detection at object speeds up to 6 m/s
- Image and barcode recognition with 10 arcs/s
- Automatic learning of the reference image
- Integrated error image memory
- Integrated illumination

Function

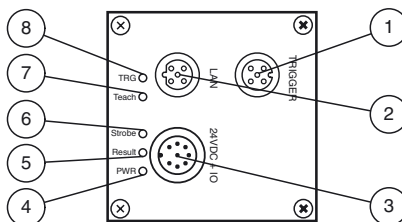
The sheet identification sensor from Pepperl+Fuchs enables fast and simple monitoring of the correct sheet sequence in collating, folding and binding machines. Sheets can be monitored either by using the image comparison method or reading in barcodes printed on the sheets.

The device can be operated locally, as a stand-alone unit or in a network where several sensors are connected together. The sensor includes a camera, illumination unit and evaluating computer with digital input and output signals as well as a network interface.

Typical areas of application are:

- Printing machines
- Folding machines
- Tying machines

Indicating / Operating means



1	Socket Trigger	
2	Socket LAN	
3	Plug 24VDC + IO	
4	Power	green
5	Result	green
6	Strobe	yellow
7	Teach	yellow
8	Trigger	yellow

Electrical connection

TRIGGER



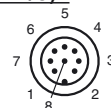
Pin	Signal
1	24 V supply trigger
2	n.c.
3	GND
4	Trigger signal (TRIG)
5	n.c.

LAN



Pin	Signal
1	Transmit Data (+)
2	Receive Data (+)
3	Transmit Data (-)
4	Receive Data (-)

(24 V DC + I/O)



Pin	Signal
1	n.c.
2	24 V Power supply
3	Output Result
4	Output Strobe
5	Input Teach
6	Input Trigger
7	GND
8	Output Mode

Release date: 2010-03-15 14:53 Date of issue: 2010-03-15 205034_ENG.xml

Technical data**General specifications**

Light type	Integrated LED lightning (white)
Object size	25 mm x 25 mm
Read distance	60 mm
Depth of focus	± 5 mm
Reading field	60 mm x 40 mm
Evaluation frequency	10 Hz
Target velocity	triggered ≤ 6 m/s

Indicators/operating means

Operating display	LED green: Ready for operation ;
-------------------	----------------------------------

Electrical specifications

Operating voltage	U_B	24 V DC ± 20 %
No-load supply current	I_0	max. 250 mA
Power consumption	P_0	6 W

Interface 1

Interface type	Ethernet
Protocol	TCP/IP
Transfer rate	100 MBit/s
Cable length	max. 30 m

Input

Input voltage	to be applied externally 24 V ± 15% PELV
Number/Type	1 trigger input
Cable length	max. 30 m

Output

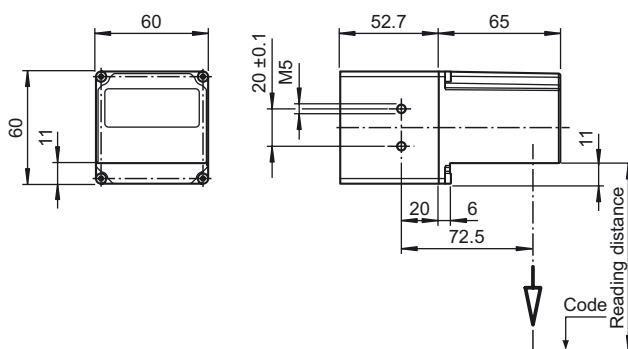
Number/Type	2 electronic outputs, PNP , optically decoupled optional up to 4 outputs
Switching type	PNP optically decoupled , short-circuit/overload protected
Switching voltage	24 V
Switching current	max. 100 mA each output
Cable length	max. 30 m

Ambient conditions

Ambient temperature	0 ... 45 °C (273 ... 318 K)
Storage temperature	-20 ... 60 °C (253 ... 333 K)

Mechanical specifications

Protection degree	IP54
Connection	3 x M12 x 1 connector
Material	
Housing	powder coated diecast zinc
Optical face	glass pane
Installation	4 x M6 threading
Mass	approx. 730 g

Dimensions**Accessories****V1S-G**

Non pre-wired cable connector

V1SD-G-2M-PUR-ABG-V45X-G

Connection cable

V1SD-G-2M-PUR-ABG-V45-G

Connection cable

V19-G-ABG-PG9

Field attachable female cordset

V15-G-2M-PUR-V15-G

Connection cable

V19-G-2M-PUR-ABG

Cable socket, shielded