



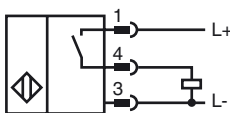
Model Number

NMN20-18GM50-E2-V1-F

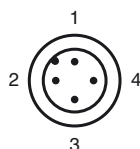
Features

- 20 mm not embeddable
- Active surface metal
- One-piece housing with stainless steel (V4A; 1.4435)

Connection



Pinout



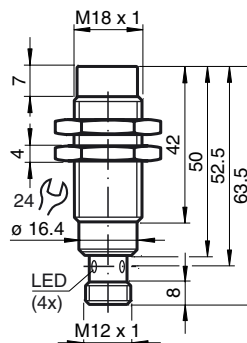
Wire colors in accordance with EN 60947-5-2

1	BN	(brown)
2	WH	(white)
3	BU	(blue)
4	BK	(black)

Accessories

- BF 18**
Mounting flange, 18 mm
- V1-G**
4-pin, M12 female field-attachable connector
- V1-W**
4-pin, M12 female field-attachable connector
- V1-G-2M-PUR**
Cable socket, M12, 4-pin, PUR cable
- V1-W-2M-PUR**
Cable socket, M12, 4-pin, PUR cable

Dimensions



Technical Data

General specifications

Switching element function	PNP	NO
Rated operating distance	s_n	20 mm
Installation		not embeddable
Output polarity		DC
Assured operating distance	s_a	0 ... 16.2 mm
Reduction factor r_{Al}		1
Reduction factor r_{Cu}		0.9
Reduction factor r_{304}		0.3 (0.6 of material thickness 2 mm)
Reduction factor r_{Si37}		1

Nominal ratings

Operating voltage	U_B	10 ... 30 V
Switching frequency	f	0 ... 200 Hz
Hysteresis	H	3 ... 15 typ. 5 %
Reverse polarity protected		yes
Short-circuit protection		yes
Voltage drop	U_d	≤ 2 V
Operating current	I_L	0 ... 200 mA
Off-state current	I_r	≤ 0.1 mA
No-load supply current	I_0	≤ 10 mA
Indication of the switching state		LED, yellow

Limit data

Operating pressure statically		60 bar (870.2 psi) max.
-------------------------------	--	-------------------------

Ambient conditions

Ambient temperature		-25 ... 85 °C (-13 ... 185 °F)
---------------------	--	--------------------------------

Mechanical specifications

Connection type		Device connector M12 x 1 , 4-pin
Housing material		Stainless steel 1.4435 / AISI 316L
Sensing face		Stainless steel 1.4435 / AISI 316L
Protection degree		IP68 / IP69K
Mass		24 g

Compliance with standards and directives

Standard conformity		
Standards		EN 60947-5-2:2007 IEC 60947-5-2:2007

Approvals and certificates

UL approval		cULus Listed, General Purpose
CSA approval		cCSAus Listed, General Purpose
CCC approval		Products with a maximum operating voltage of ≤ 36 V do not bear a CCC marking because they do not require approval.

Release date: 2010-11-16 13:13 Date of issue: 2012-02-17 204822_eng.xml