



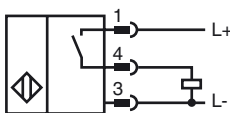
**Model Number**

NMB10-18GM50-E2-V1-F

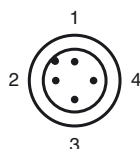
**Features**

- 10 mm flush
- Active surface metal
- One-piece housing with stainless steel (V4A; 1.4435)

**Connection**



**Pinout**



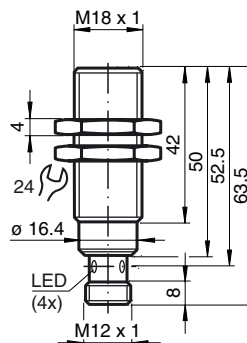
Wire colors in accordance with EN 60947-5-2

1	BN	(brown)
2	WH	(white)
3	BU	(blue)
4	BK	(black)

**Accessories**

- BF 18**  
Mounting flange, 18 mm
- V1-G**  
4-pin, M12 female field-attachable connector
- V1-W**  
4-pin, M12 female field-attachable connector
- V1-G-2M-PUR**  
Cable socket, M12, 4-pin, PUR cable
- V1-W-2M-PUR**  
Cable socket, M12, 4-pin, PUR cable

**Dimensions**



**Technical Data**

**General specifications**

Switching element function	PNP	NO
Rated operating distance	$s_n$	10 mm
Installation		flush in mild steel
Output polarity		DC
Assured operating distance	$s_a$	0 ... 8.1 mm
Reduction factor $r_{Al}$		0.4
Reduction factor $r_{Cu}$		0.25
Reduction factor $r_{304}$		0.5 (0.9 of material thickness 2 mm)
Reduction factor $r_{317}$		1

**Nominal ratings**

Operating voltage	$U_B$	10 ... 30 V
Switching frequency	$f$	0 ... 300 Hz
Hysteresis	$H$	3 ... 15 typ. 5 %
Reverse polarity protected		yes
Short-circuit protection		yes
Voltage drop	$U_d$	$\leq 2$ V
Operating current	$I_L$	0 ... 200 mA
Off-state current	$I_r$	$\leq 0.1$ mA
No-load supply current	$I_0$	$\leq 10$ mA
Indication of the switching state		LED, yellow

**Limit data**

Operating pressure statically		60 bar (870.2 psi) max.
-------------------------------	--	-------------------------

**Ambient conditions**

Ambient temperature		-25 ... 85 °C (-13 ... 185 °F)
---------------------	--	--------------------------------

**Mechanical specifications**

Connection type		Device connector M12 x 1, 4-pin
Housing material		Stainless steel 1.4435 / AISI 316L
Sensing face		Stainless steel 1.4435 / AISI 316L
Protection degree		IP68 / IP69K
Mass		24 g

**General information**

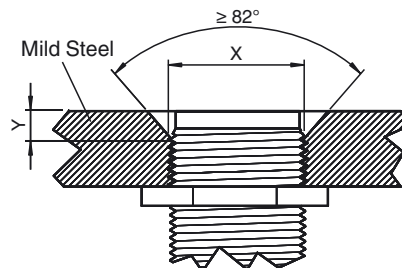
Assembly dimensions		x: 18 mm y: $\geq 4$ mm
---------------------	--	----------------------------

**Compliance with standards and directives**

Standard conformity		
Standards		EN 60947-5-2:2007 IEC 60947-5-2:2007

**Approvals and certificates**

UL approval		cULus Listed, General Purpose
CSA approval		cCSAus Listed, General Purpose
CCC approval		Products with a maximum operating voltage of $\leq 36$ V do not bear a CCC marking because they do not require approval.



Sensor face is flush with mounting surface.

Release date: 2012-06-27 13:22 Date of issue: 2012-06-27 204821\_eng.xml