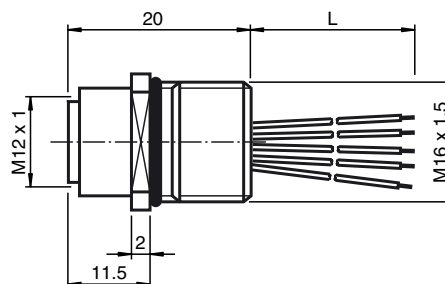




**Dimensions**



**Model Number**

**V15-M16-500**

Receptacles, M12/M16, 5-pin

**Features**

- Front/screw mounting
- Suitable for 2-, 3- and 4-wire technology

**Technical data**

**General specifications**

Number of poles	5
Connection 1	Connector, female
Construction type 1	straight
Threading 1	M12
Connection 2	free cable end

**Electrical specifications**

Operating voltage	max. 60 V DC
Test voltage	> 2000 V <sub>eff</sub> AC
Operating current	max. 4 A
Volume resistance	< 3 mΩ
Insulation resistance	≥ 100 MΩ

**Ambient conditions**

Ambient temperature	-25 ... 85 °C (248 ... 358 K)
Degree of soiling	3

**Mechanical specifications**

pin diameter	1 mm
Protection degree	IP67
Connection	Tinned copper single leads, Ø1.2 ±0.07 mm

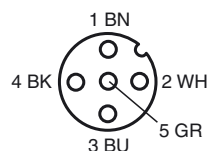
**Material**

Contacts	CuZn
Contact surface	Au
Threaded bushes	Zinc die-casting, nickel-plated
Seal	NBR
Core isolation	TPE

**Cable**

Cores	5 x 0.34 mm <sup>2</sup>
Conductor construction	7 x 0.25 mm Ø
Length	L 500 mm

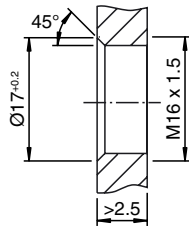
**Electrical connection**



Release date: 2008-08-13 10:32 Date of issue: 2008-08-26 198438\_ENG.xml

**Note**

Housing cutout for M16 fastening thread, mounting panel with thread:



Housing cutout for M16 fastening thread, mounting panel with feed-through hole (alternatively with surface as protection against rotation):

