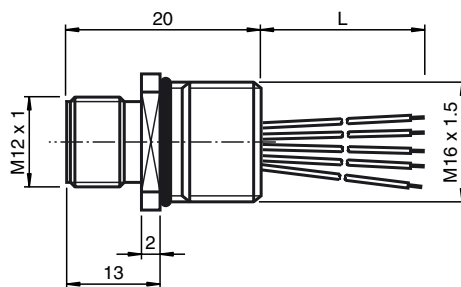




**Dimensions**



**Model Number**

**V15S-M16-500**

Receptacles, M12/M16, 5-pin

**Features**

- Front/screw mounting
- Suitable for 2-, 3- and 4-wire technology

**Technical data**

**General specifications**

|                     |                 |
|---------------------|-----------------|
| Number of poles     | 5               |
| Connection 1        | Connector, male |
| Construction type 1 | straight        |
| Threading 1         | M12             |
| Connection 2        | free cable end  |

**Electrical specifications**

|                       |                            |
|-----------------------|----------------------------|
| Operating voltage     | max. 60 V DC               |
| Test voltage          | > 2000 V <sub>eff</sub> AC |
| Operating current     | max. 4 A                   |
| Volume resistance     | < 3 mΩ                     |
| Insulation resistance | ≥ 100 MΩ                   |

**Ambient conditions**

|                     |                               |
|---------------------|-------------------------------|
| Ambient temperature | -25 ... 85 °C (248 ... 358 K) |
| Degree of soiling   | 3                             |

**Mechanical specifications**

|                   |   |
|-------------------|---|
| pin diameter      | 1 mm                                      |
| Protection degree | IP67                                      |
| Connection        | Tinned copper single leads, Ø1.2 ±0.07 mm |

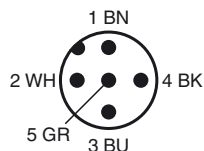
**Material**

|                 |                                 |
|-----------------|---------------------------------|
| Contacts        | CuZn                            |
| Contact surface | Au                              |
| Connector       | Zinc die-casting, nickel-plated |
| Seal            | NBR                             |
| Core isolation  | TPE                             |

**Cable**

|                        |                          |
|------------------------|--------------------------|
| Cores                  | 5 x 0.34 mm <sup>2</sup> |
| Conductor construction | 7 x 0.25 mm Ø            |
| Length                 | L 500 mm                 |

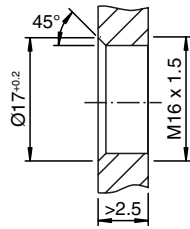
**Electrical connection**



Release date: 2008-08-13 10:32 Date of issue: 2008-08-13 196437\_ENG.xml

**Note**

Housing cutout for M16 fastening thread, mounting panel with thread:



Housing cutout for M16 fastening thread, mounting panel with feed-through hole (alternatively with surface as protection against rotation):

