



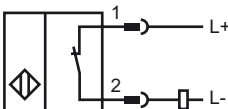
Model Number

NCB8-18GM50-Z5-V1

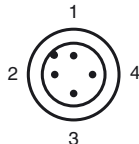
Features

- Increased operating distance

Connection



Pinout



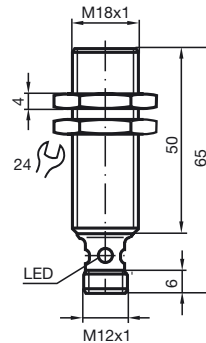
Wire colors in accordance with EN 60947-5-2

1	BN	(brown)
2	WH	(white)
3	BU	(blue)
4	BK	(black)

Accessories

- BF 18**
Mounting flange, 18 mm
- V1-G**
4-pin, M12 female field-attachable connector
- V1-W**
4-pin, M12 female field-attachable connector
- V1-G-2M-PUR**
Cable socket, M12, 4-pin, PUR cable
- V1-W-2M-PUR**
Cable socket, M12, 4-pin, PUR cable
- EXG-18**
Quick mounting bracket with dead stop

Dimensions



Technical Data

General specifications

Switching element function		DC	NC
Rated operating distance	s_n	8 mm	
Installation		embeddable	
Assured operating distance	s_a	0 ... 6.1 mm	
Reduction factor r_{AI}		0.4	
Reduction factor r_{Cu}		0.4	
Reduction factor r_{303}		0.7	
Reduction factor r_{Brass}		0.5	

Nominal ratings

Operating voltage	U_B	3.5 ... 30 V	
Switching frequency	f	0 ... 1000 Hz	
Reverse polarity protected		reverse polarity-conductive	
Short-circuit protection		pulsing	
Voltage drop	U_d	≤ 3.5 V	
Temperature drift		$\pm 15\%$	
Operating current	I_L	2 ... 100 mA	
Off-state current	I_r	typ. 0.8 mA	
Indication of the switching state		LED, yellow	

Ambient conditions

Ambient temperature		-25 ... 70 °C (-13 ... 158 °F)
Storage temperature		-25 ... 85 °C (-13 ... 185 °F)

Mechanical specifications

Connection type	Device connector M12 x 1 , 4-pin	
Housing material	brass, nickel-plated	
Sensing face	PBT	
Protection degree	IP67	

Compliance with standards and directives

Standard conformity	
Standards	EN 60947-5-2:2007 IEC 60947-5-2:2007

Approvals and certificates

UL approval	cULus Listed, General Purpose
CSA approval	cCSAus Listed, General Purpose
CCC approval	Products with a maximum operating voltage of ≤ 36 V do not bear a CCC marking because they do not require approval.

Release date: 2011-07-14 07:40 Date of issue: 2011-07-14 18:2907_eng.xml