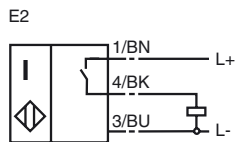


**Model Number**

NBB4-12GM50-E2-V1-M

Features

- Basic series
- 4 mm embeddable
- increased operating distance
- e1-Type approval

Connection**Accessories****BF 12**

Mounting flange

EXG-12

Mounting aid

V1-G

Non pre-wired cable socket

V1-W

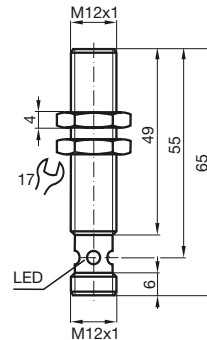
Non pre-wired cable socket

V1-G-2M-PUR

Cable connector

V1-W-2M-PUR

Cable connector

Dimensions**Technical Data****General specifications**

Switching element function	PNP Make function
Rated operating distance	s_n 4 mm
Installation	embeddable
Output polarity	DC
Assured operating distance	s_a 0 ... 3.24 mm
Reduction factor r_{AI}	0.45
Reduction factor r_{Cu}	0.35
Reduction factor r_{V2A}	0.7

Nominal ratings

Operating voltage	U_B	10 ... 30 V
Switching frequency	f	0 ... 1000 Hz
Hysteresis	H	typ. 5 %
Reverse polarity protection		protected against reverse polarity
Short-circuit protection		pulsing
Voltage drop	U_d	≤ 3 V
Operating current	I_L	0 ... 150 mA
Off-state current	I_r	0 ... 0.5 mA typ. 0.1 μ A at 25 °C
No-load supply current	I_0	≤ 15 mA
Indication of the switching state		Multihole-LED, yellow

Standard conformity

Standards	IEC / EN 60947-5-2:2004
-----------	-------------------------

Ambient conditions

Ambient temperature	-25 ... 70 °C (248 ... 343 K)
---------------------	-------------------------------

Mechanical specifications

Connection type	V1-connector
Cable version	PBT
Housing material	brass, nickel-plated
Sensing face	PBT
Protection degree	IP67