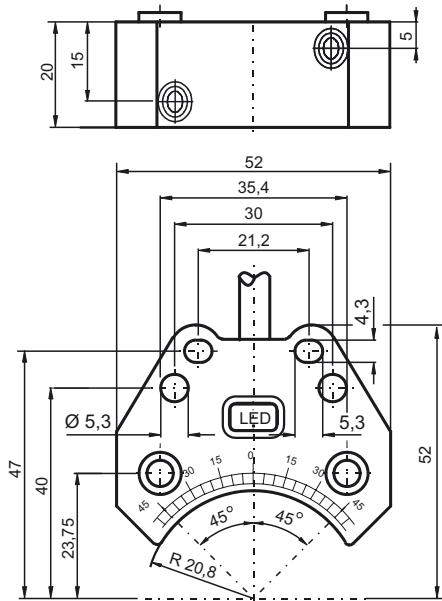
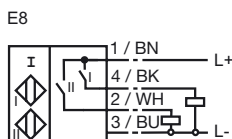


For installation in housing
 Direct mounting on stand-
 ard actuators
 Satisfies machinery direc-
 tive



General specifications	
Switching element function	PNP Dual Make function
Rated operating distance s_n	3 mm
Installation	embeddable
Output polarity	DC
Assured operating distance s_a	0 ... 2.43 mm
Reduction factor r_{AI}	0.5
Reduction factor r_{Cu}	0.4
Reduction factor r_{V2A}	1
Reduction factor r_{SI37}	1.1
Nominal ratings	
Operating voltage U_B	10 ... 30 V
Switching frequency f	0 ... 500 Hz
Hysteresis H	typ. 5 %
Reverse polarity protection	all connections
Short-circuit protection	pulsing
Voltage drop U_d	≤ 3 V
Design data	
Operating current I_L	0 ... 200 mA
Off-state current I_r	0 ... 0.5 mA typ. 0.1 μ A at 25 °C
No-load supply current I_0	≤ 25 mA
Operating voltage display	LED, green
Indication of the switching state	LED, yellow
Standard conformity	
EMC in accordance with	IEC / EN 60947-5-2:2004
Standards	IEC / EN 60947-5-2:2004
Ambient conditions	
Ambient temperature	-25 ... 70 °C (248 ... 343 K)
Storage temperature	-40 ... 85 °C (233 ... 358 K)
Mechanical specifications	
Connection type	5 m, PVC cable
Core cross-section	0.75 mm ²
Housing material	PBT
Sensing face	PBT
Protection degree	IP67
Note	Mounted on mechanical drive
General information	
Use in the hazardous area	see instruction manuals
Category	3D

Connection type:



2006-06-28 - 129857_ENG.xml

ATEX 3D

Instruction

Device category 3D

Directive conformity

Standard conformity

CE symbol

Ex-identification

General

Installation, Commissioning

Maintenance

[Fett]Special conditions

Maximum operating current I_L

Maximum operating voltage U_{Bmax}

Maximum heating (Temperature rise)

at $U_{Bmax}=30\text{ V}$, $I_L=200\text{ mA}$

at $U_{Bmax}=30\text{ V}$, $I_L=100\text{ mA}$

at $U_{Bmax}=30\text{ V}$, $I_L=50\text{ mA}$

at $U_{Bmax}=30\text{ V}$, $I_L=25\text{ mA}$

Protection from mechanical danger

Protection of the connection cable

Manual electrical apparatus for hazardous areas

for use in hazardous areas with non-conducting combustible dust

94/9/EG

EN 50281-1-1

Protection via housing

Use is restricted to the following stated conditions

CE

II 3D IP67 T 122 °C X

The apparatus has to be operated according to the appropriate data in the data sheet and in this instruction manual.

The data stated in the data sheet are restricted by this operating instruction! The special conditions must be adhered to!

Laws and/or regulations and standards governing the use or intended usage goal must be observed.

No changes can be made to apparatus, which are operated in hazardous areas. Repairs to these apparatus are not possible.

The maximum permissible load current must be restricted to the values given in the following list.

High load currents and load short-circuits are not permitted.

The maximum permissible operating voltage U_{Bmax} must be restricted to the values given in the following list. Tolerances are not permitted.

dependant of the load current I_L and the max. operating voltage U_{Bmax} .

Information can be taken from the following list. The maximum surface temperature at maximum ambient temperature is given in the Ex identification of the apparatus.

52 °C

40 °C

35 °C

34 °C

The sensor must not be mechanically damaged.

The connection cable must be prevented from being subjected to tension and torsional loading.