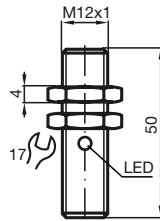


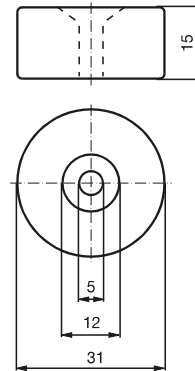
Comfort series  
60 mm embedded with per-  
manent magnet  
DM 60-31-15



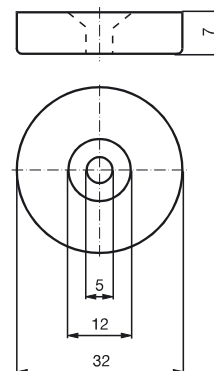
CE 0102

General specifications	
Switching element function	NAMUR NO
Rated operating distance $s_n$	60 mm
Installation	embeddable
Assured operating distance $s_a$	0 ... 60 mm
Nominal ratings	
Nominal voltage $U_o$	8 V
Switching frequency $f$	0 ... 1000 Hz
Current consumption	
Magnet detected	$\geq 3$ mA
Magnet not detected	$\leq 1$ mA
Indication of the switching state	LED, yellow
Standard conformity	
EMC in accordance with	EN 60947-5-2
Standards	DIN EN 60947-5-6 (NAMUR)
Ambient conditions	
Ambient temperature	-25 ... 70 °C (248 ... 343 K)
Mechanical specifications	
Connection type	V1-connector
Housing material	high grade steel
Sensing face	high grade steel
Protection degree	IP67

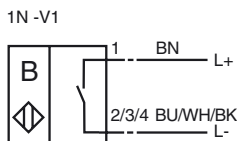
Magnet DM 60-31-15



Magnet DM 25-32-07



**Connection type:**



## ATEX

Data for Ex areas

Effective internal inductivity  $C_i$   $\leq 40$  nF

Effective internal inductance  $L_i$   $\leq 43$   $\mu$ H