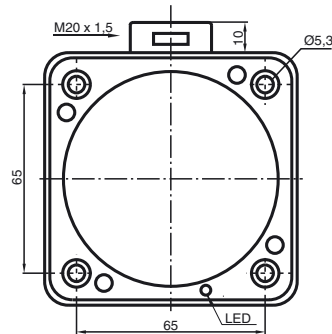
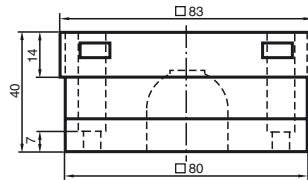


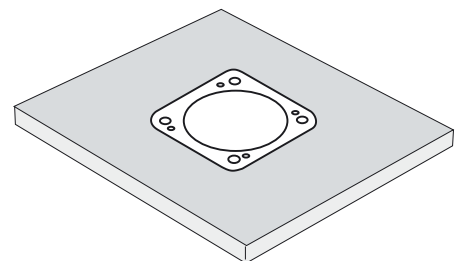
Comfort series
 40 mm embeddable
 Metric cable gland M20 x 1.5
 1.5



General specifications	
Switching element function	AC Make/Break function
Rated operating distance s_n	40 mm
Installation	embeddable
Assured operating distance s_a	0 ... 32,4 mm
Reduction factor r_{Al}	0,38
Reduction factor r_{Cu}	0,35
Reduction factor r_{V2A}	0,83
Nominal ratings	
Operating voltage U_B	20 ... 253 V ¹⁾
Switching frequency f	0 ... 10 Hz
Hysteresis H	0 ... 20 typ. %
Short circuit protection	no
Voltage drop U_d	≤ 7 V
Momentary current (20 ms, 0.1 Hz)	0 ... 4000 mA
Operating current I_L	10 ... 500 mA
Off-state current I_r	0 ... 2,5 mA typ.
Operating voltage display	LED, green
Indication of the switching state	LED, yellow
Standard conformity	
Standards	EN 60947-5-2
Ambient conditions	
Ambient temperature	-25 ... 70 °C (248 ... 343 K)
Mechanical specifications	
Connection type	terminal compartment
Core cross-section	up to 2.5 mm ²
Housing material	PBT
Sensing face	PBT
Protection degree	IP67
Note	¹⁾ In the temperature range below 0 °C, permissible operating voltage U_b 80...253 V

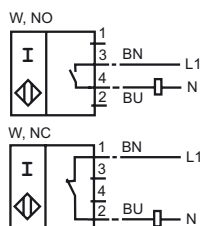
These sensors are especially designed for embeddable mounting in conveyor floors. Due to its precise location in metal base plates the sensor is afforded a high degree of mechanical protection. No clearance is required between the sensor and the base plate, avoiding the need for protective guarding to prevent possible foot injury.

The large sensing range ensures positive detection, and thus provides consistent control and monitoring of the conveyor.



Warning!
 Once the metal screening has been removed, the sensor can no longer be embeddable mounted.

Connection type:



2004-03-15 - 121191_ENG.xml