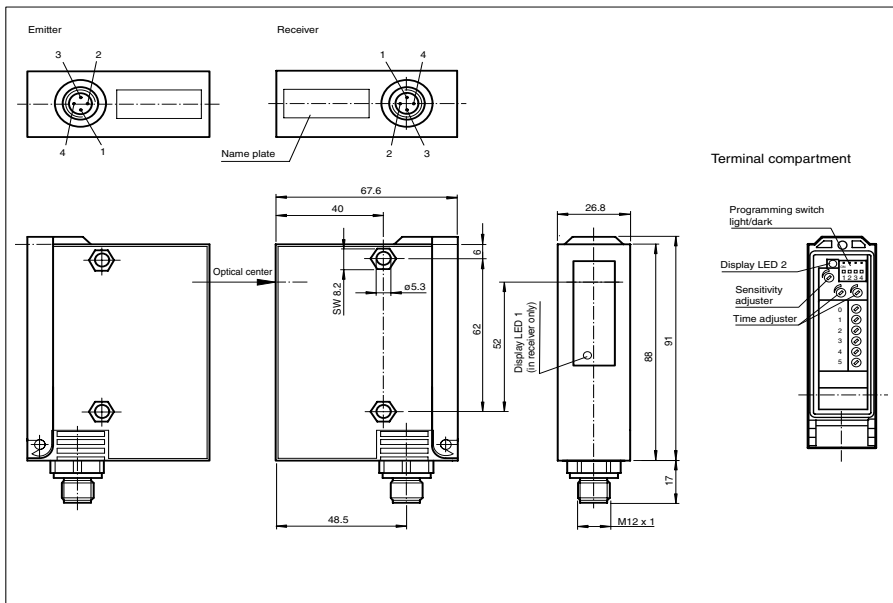




Dimensions



Model Number

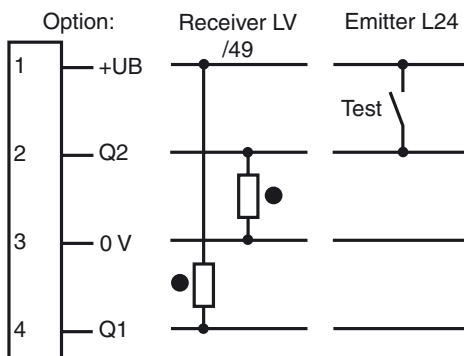
L24/LV24/49/92

Thru-beam sensor
with M12, 4-pin metal connector

Features

- Detection range up to 45 m
- Sturdy plastic housing
- Sensitivity adjuster and light-/dark switch
- Pre-fault indication and output
- 4 programmable time functions

Electrical connection



○ = Light on
● = Dark on

Release date: 2009-08-18 16:16 Date of issue: 2009-08-18 11:5536_ENG.xml

Technical data

General specifications

Effective detection range	0 ... 30 m
Threshold detection range	45 m
Light source	LED
Approvals	CE
USA	UL
Kanada	CSA
Obstacle size	25 mm
Light type	red, modulated light
Diameter of the light spot	250 mm at 10 m detection range
Angle of divergence	2 °
Ambient light limit	100000 Lux

Indicators/operating means

Function display	LED yellow, frontal and in the terminal compartment, lit up when light beam is free, flashing when falling short of the stability control
Operating elements	Programming switch for light/dark ON, timer functions
Operating elements	2 potentiometers for timer functions
Operating elements	1 Potentiometer as sensitivity adjuster

Electrical specifications

Operating voltage	U_B	10 ... 30 V DC
Ripple		10 %
No-load supply current	I_0	55 mA (device)

Input

Test input	Emitter deactivation
------------	----------------------

Output

Switching type	light/dark switching	
Signal output	1 npn, 1 pnp synchronised-switching, short-circuit proof, protected against reverse polarity	
Switching voltage	30 V DC	
Switching current	max. 200 mA	
Switching frequency	f	700 Hz
Response time		0.7 ms
Timer function	GAN, GAB, IAB, GAN-GAB, programmable adjustment range 0.1 ...10 s	

Standard conformity

Standards	EN 60947-5-2
-----------	--------------

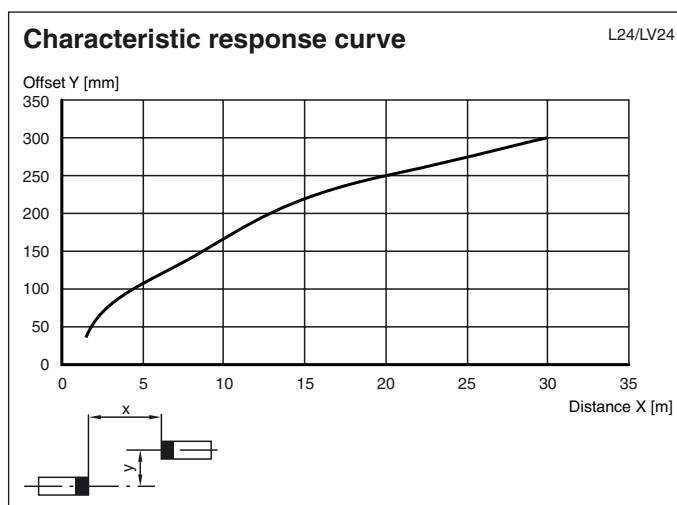
Ambient conditions

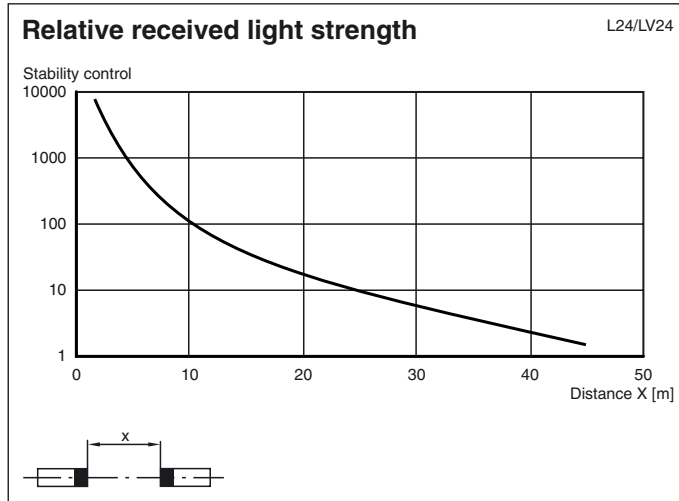
Ambient temperature	-20 ... 60 °C (253 ... 333 K)
Storage temperature	-20 ... 75 °C (253 ... 348 K)

Mechanical specifications

Protection degree	IP65
Connection	M12 connector, 4-pin
Material	
Housing	GF17
Optical face	glass
Mass	100 g (device)

Curves/Diagrams





Release date: 2009-08-18 16:16 Date of issue: 2009-08-18 11:5536_ENG.xml