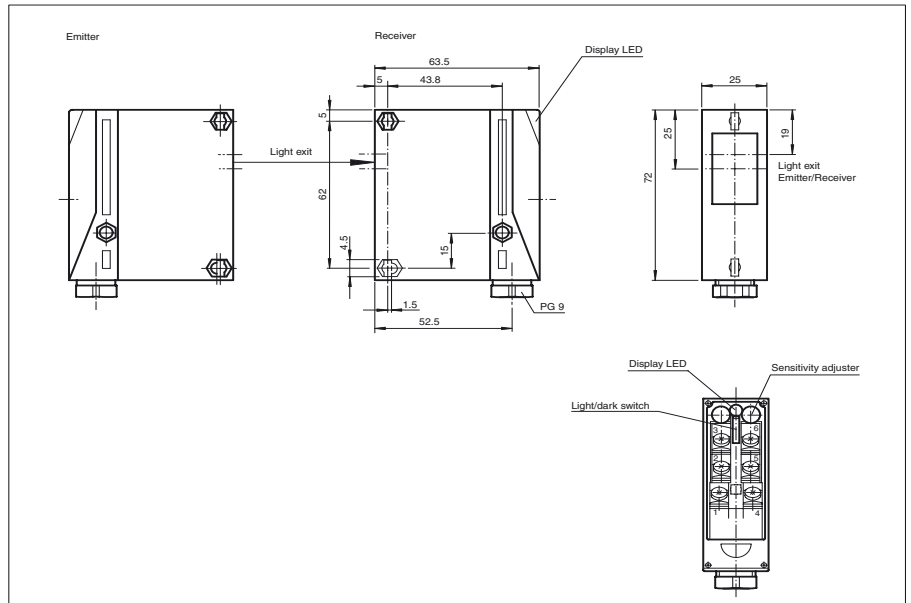




Dimensions



Model Number

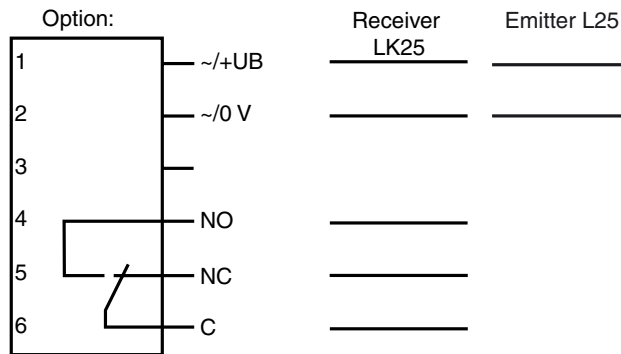
L25/LK25/116

Thru-beam sensor
with terminal compartment

Features

- Detection range up to 45 m
- Compact design
- Sensitivity adjuster and light-/dark switch
- Pre-fault indication and output
- Test input

Electrical connection



○ = Light on
● = Dark on

Release date: 2007-09-21 11:12 Date of issue: 2007-09-21 11:534_ENG.xml

Technical data

General specifications

Effective detection range	0 ... 10 m
Threshold detection range	20 m
Light source	IREL
Approvals	CE, cULus
Obstacle size	18 mm
Light type	infrared, modulated light
Diameter of the light spot	350 mm at a distance of 10 m
Angle of divergence	Emitter: approx. 2 °, receiver: approx. 4 °
Ambient light limit	100000 Lux

Indicators/operating means

Function display	LED green, lights up when light beam is free/flashes when falling short of the stability control
Operating elements	Light/dark switch
Operating elements	sensitivity adjuster

Electrical specifications

Operating voltage	12 ... 240 V AC/DC
-------------------	--------------------

Output

Switching type	Light/dark ON, switchable
Signal output	1 relay, 1 alternator
Switching voltage	max. 250 V AC
Switching current	max. 2 A
Switching frequency	f 25 Hz
Response time	20 ms

Standard conformity

Standards	EN 60947-5-2
-----------	--------------

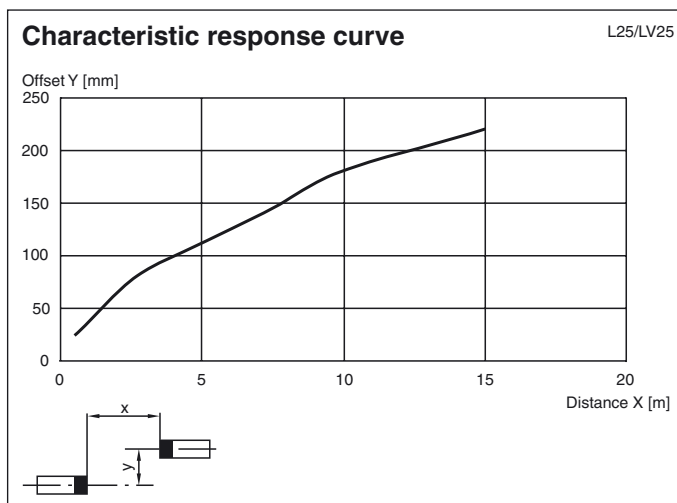
Ambient conditions

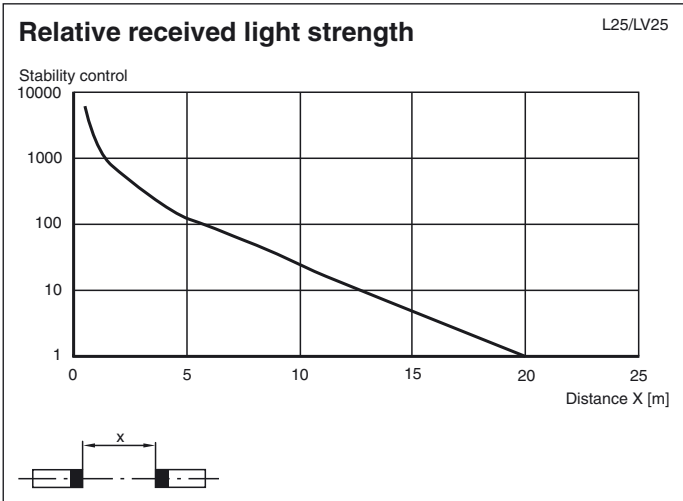
Ambient temperature	-20 ... 60 °C (253 ... 333 K)
Storage temperature	-20 ... 75 °C (253 ... 348 K)

Mechanical specifications

Protection degree	IP65
Connection	terminal compartment
Material	
Housing	Terluran GV15
Optical face	glass
Mass	100 g (device)

Curves/Diagrams





Release date: 2007-09-21 11:12 Date of issue: 2007-09-21 11:534_ENG.xml