



Model Number

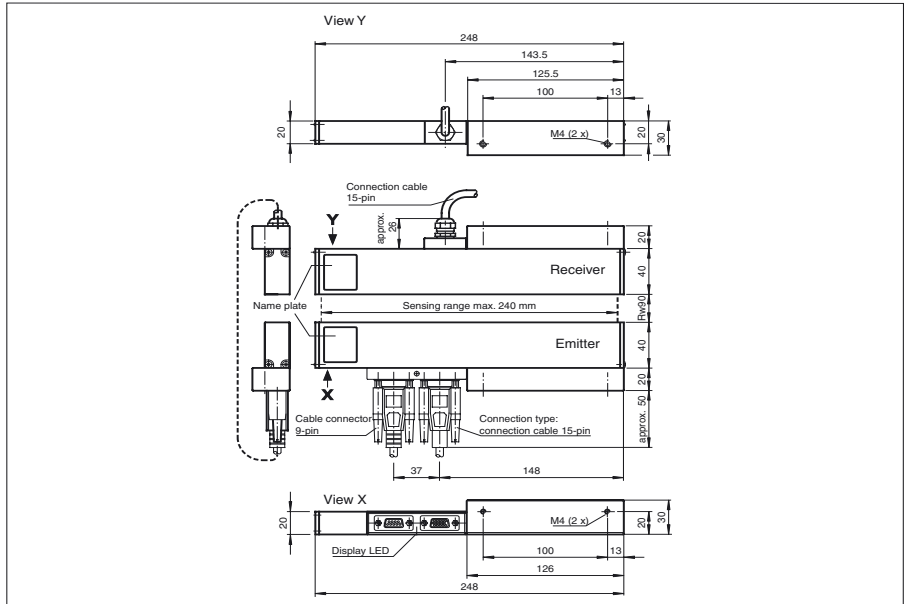
ELG-E/ELG-S

Light grid
with 9-pin Sub-D connector

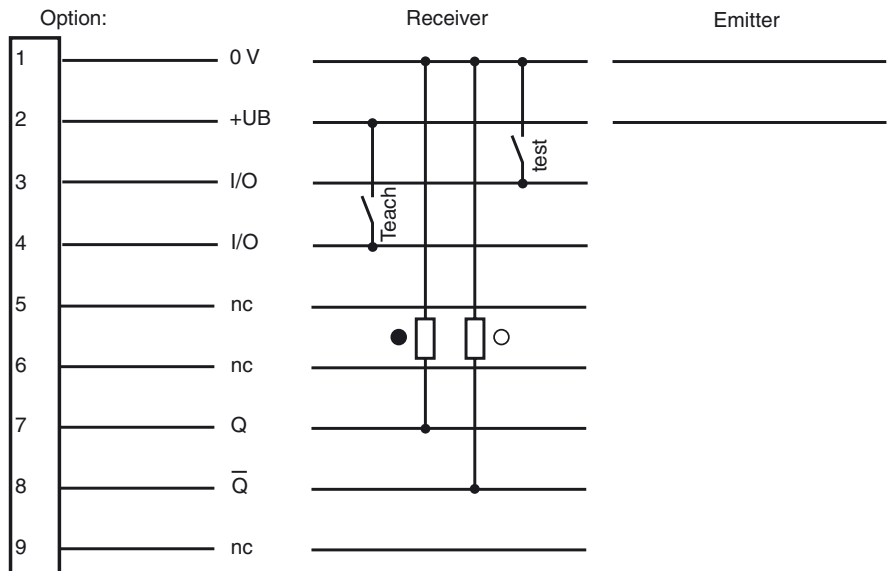
Features

- Detection range up to 125 mm
- High-resolution light grid
- Beam spacing 5 mm
- Detection of programmed objects by TEACH-IN
- Micro processor controlled beam evaluation

Dimensions



Electrical connection



○ = Light on
● = Dark on

Release date: 2007-09-24 09:54 Date of issue: 2007-09-24 11:55:12_ENG.xml

Technical data

General specifications

Effective detection range	0 ... 90 mm
Threshold detection range	125 mm
Light source	IREL
Approvals	CE
Field height	240 mm
Obstacle size	5 mm
Beam spacing	5 mm
Number of beams	48
Sensing range	0 ... 90 mm
Light type	Infrared
Angle of divergence	approx. $\pm 10^\circ$
Ambient light limit	100000 Lux

Indicators/operating means

Function display	LED yellow
------------------	------------

Electrical specifications

Operating voltage	24 V DC
Ripple	10 %

Input

Test input	Emitter deactivation
Function input	TEACH-IN input

Output

Switching type	light/dark switching
Signal output	2 pnp, antivalent, short-circuit proof, protected against reverse polarity
Switching voltage	24 V DC
Switching current	200 mA
Switching frequency	f 350 Hz
Response time	1 ms

Standard conformity

Standards	EN 60947-5-2
-----------	--------------

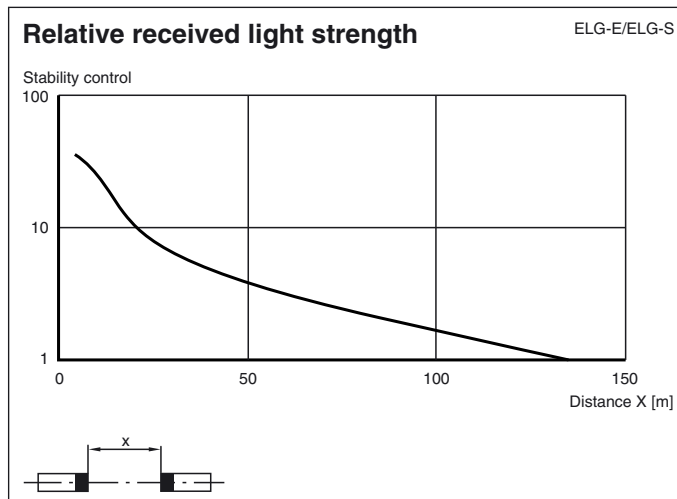
Ambient conditions

Ambient temperature	0 ... 60 °C (273 ... 333 K)
Storage temperature	0 ... 75 °C (273 ... 348 K)

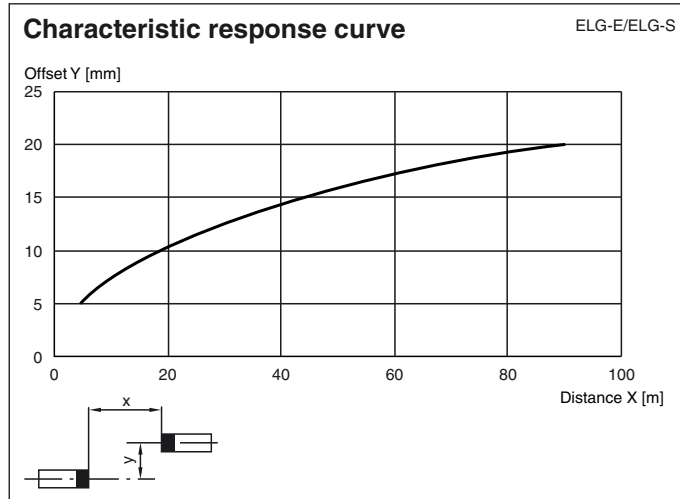
Mechanical specifications

Protection degree	IP65
Connection	9-pin Sub-D connector
Material	
Housing	metal
Optical face	plastic
Mass	1000 g (device)

Curves/Diagrams



Release date: 2007-09-24 09:54 Date of issue: 2007-09-24 11:55:12_ENG.xml



Accessories

Cable connector for light grid ELG:

Model number
SUBD-ELG-VIS