



Model Number

SLPCM65-3-L/31

Safety light grid with integrated control unit
with 2 relay outputs with two force-guided normally open contacts

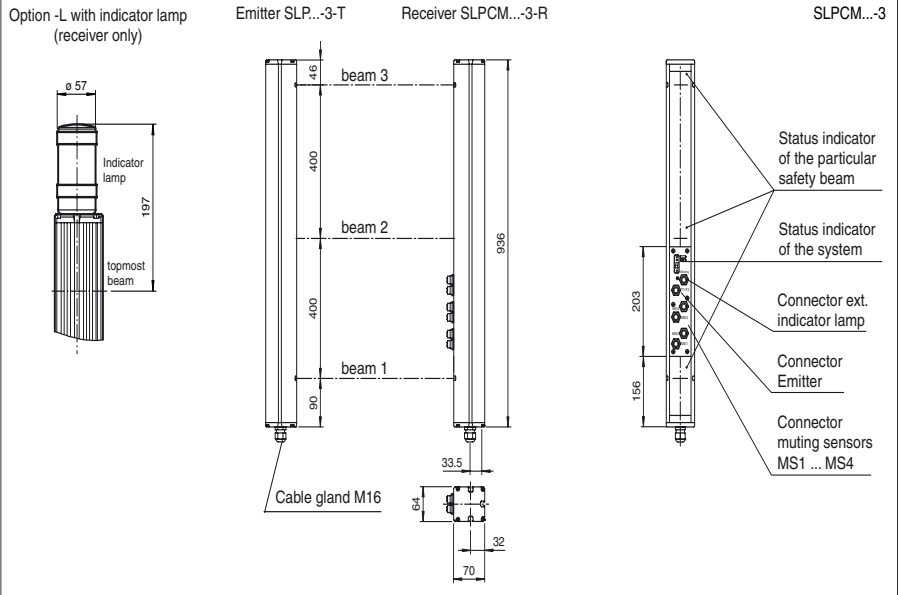
Features

- Detection range up to 65 m
- 3-Radial design
- Beam spacing 400 mm
- Self-monitoring (type 4 according to IEC/EN 61496-1)
- Red transmission light
- Usable with or without start/restart disable
- Sequential and parallel muting in various operating modes
- Emergency muting for the correction of the material jam
- Integrated relay monitor
- 7-segment diagnostic display
- Integrated function display
- Pre-fault indication
- OSSD outputs as semiconductor or relay outputs

Accessories

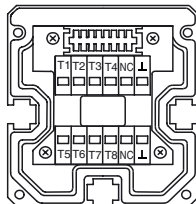
PG SLP-3
Mounting aid Safety

Dimensions

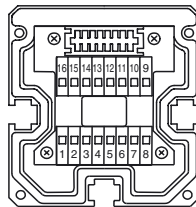


Electrical connection

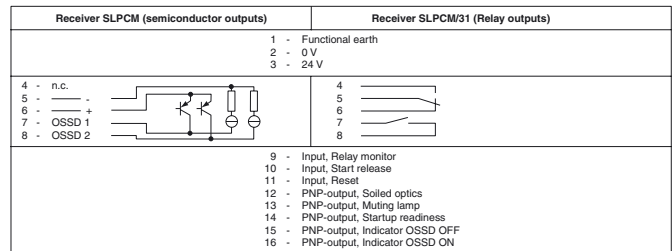
Emitter SLP



Receiver SLPCM



- T1 - Emitter channel 1
- T2 - Emitter channel 2
- T3 - Emitter channel 3
- L - 0V



Release date: 2009-12-14 11:23 Date of issue: 2009-12-14 11:4894_ENG.xml

Technical data**General specifications**

| | |
|---------------------------------------|--|
| Effective detection range | 12 ... 65 m |
| Light source | LED |
| Light type | red, modulated light |
| Approvals | TÜV |
| Tests | IEC/EN 61496 |
| Safety type according to IEC/EN 61496 | 4 |
| Marking | CE |
| Obstacle size | static: 32 mm dynamic: 50 mm (at v = 1.6 m/s of the obstacle) |
| Beam spacing | 400 mm |
| Number of beams | 3 |
| Operating mode | Start/restart disable, relay monitor, muting operating modes |
| Angle of divergence | < 5 ° |

Functional safety related parameters

| | |
|--------------------------------|----------|
| Safety Integrity Level (SIL) | SIL 3 |
| Performance level (PL) | PL e |
| Category | Cat. 4 |
| Mission Time (T _M) | 20 a |
| PFH _d | 3.54 E-9 |

Indicators/operating means

| | |
|----------------------|---|
| Diagnosis display | 7-segment display |
| Function display | LED red: per receiver channel off: interruption flashes: receiver continuously on: reception with sufficient stability control on the front plate: LED red: OSSD off LED green: OSSD on LED yellow: types of muting operation |
| Muting display | Indicator lamp |
| Pre-fault indication | LED red next to receiver flashes |
| Operating elements | 10 DIP switch in receiver terminal compartment |

Electrical specifications

| | | |
|------------------------|----------------|---|
| Operating voltage | U _B | 24 V DC -15 % / +25 % , electrically isolated |
| No-load supply current | I ₀ | max. 250 mA |
| Protection class | | III |

Input

| | |
|--------------------|---|
| Activation current | approx. 10 mA |
| Activation time | 0.03 ... 1 s |
| Test input | Reset-input for system test |
| Function input | Relay monitor, start release, muting sensors (max. 4) |

Output

| | |
|------------------------------------|---|
| Output of the pre-fault indication | 1 PNP, +U _B -2 V, max. 300 mA |
| Safety output | 2 relay outputs, compelled connection NO-contact |
| Signal output | 1 PNP each, max. 300 mA for startup readiness, OSSD on, OSSD off, muting lamp, signals in parallel in the lamp socket |
| Switching voltage | 20 ... 60 V DC, 12 ... 25 V AC _{rms} |
| Switching current | 0.01 ... 2 A |
| Switch power | 100 VA |
| Response time | 40 ms |

Ambient conditions

| | |
|---------------------|-------------------------------|
| Ambient temperature | 0 ... 50 °C (273 ... 323 K) |
| Storage temperature | -20 ... 70 °C (253 ... 343 K) |
| Relative humidity | max. 95 %, not condensing |

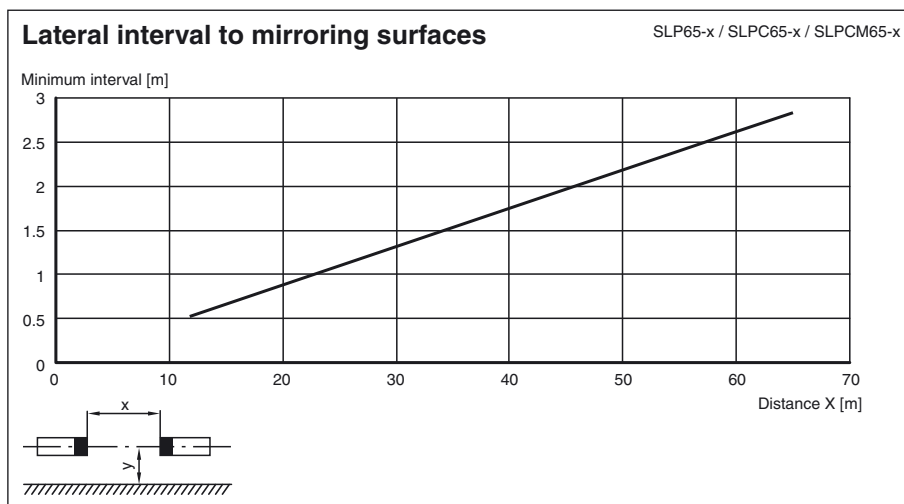
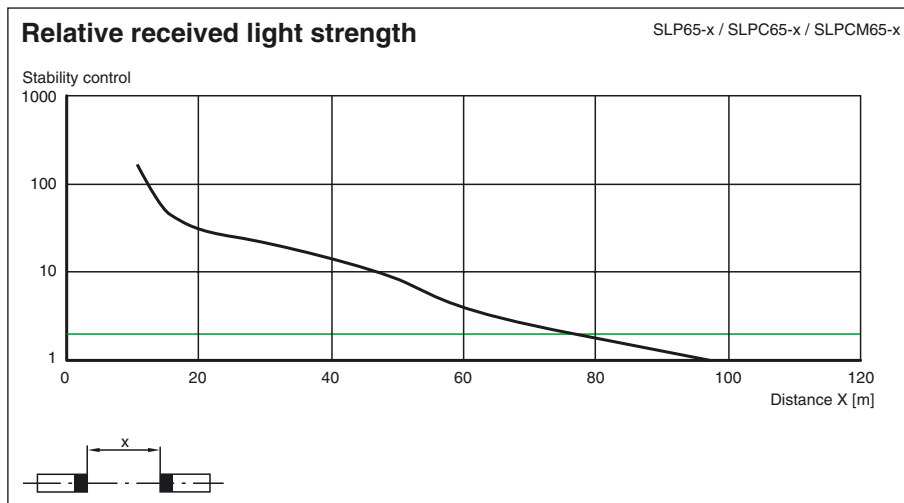
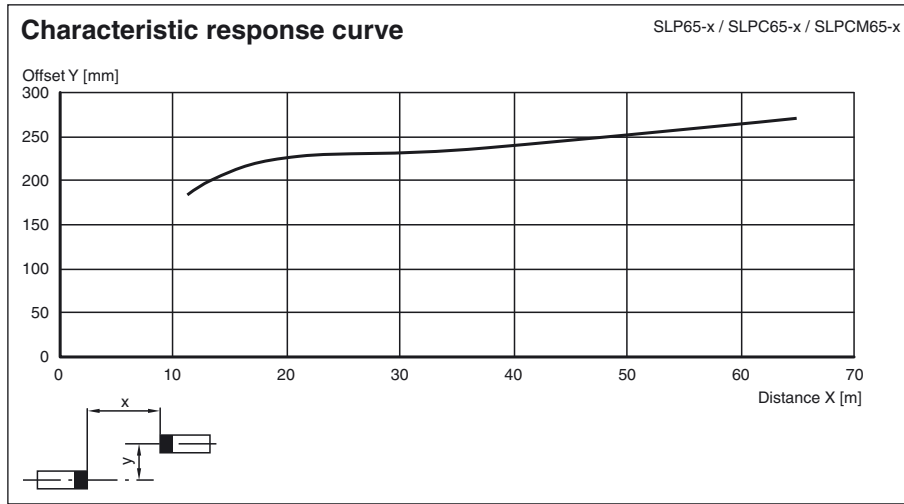
Mechanical specifications

| | |
|--------------------|--|
| Protection degree | IP65 |
| Connection | Cable screwed connection M16 , terminal compartment with cage terminals, M12 connector for transmitters, muting lamp, etc., muting sensors, lamp socket for muting lamp, etc. |
| Connection options | Further electrical connection options on request: Connector DIN 43 651 Hirschmann, emitter: 6-pin+PE, receiver: 11-pin+PE |
| Material | |
| Housing | aluminium extruded structural profile, RAL 1021 (yellow) coated |
| Optical face | Plastic pane |
| Mass | Per 3400 g |

General information

| | |
|-------------------|------------------|
| System components | |
| Emitter | SLP65-3-T |
| Receiver | SLPCM65-3-R-L/31 |

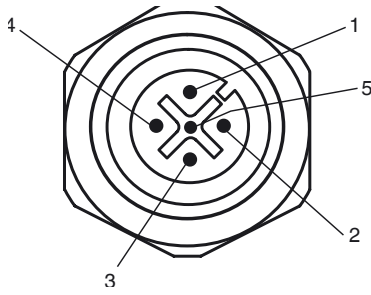
Curves/Diagrams




Release date: 2009-12-14 11:23 Date of issue: 2009-12-14 11:4894_ENG.xml

Additional information

Socket assignment on the front side of the device



Indicator lamp control 

| Socket | Function |
|--------|-----------------------|
| 1 | OSSD on |
| 2 | OSSD off |
| 3 | 0 V |
| 4 | Readiness for startup |
| 5 | Muting (monitored) |

T1 - T4 transmitter control

| Socket | Function |
|--------|-----------------------|
| 1 | Transmitter channel 1 |
| 2 | Transmitter channel 2 |
| 3 | 0 V |
| 4 | Transmitter channel 3 |

Muting sensor inputs MS1 - MS4

| Socket | Function |
|--------|---------------|
| 1 | + 24 V |
| 3 | 0 V |
| 4 | Sensor signal |

System accessories

- Mounting set MS SLP
- Profile alignment aid PA SLP/SLC
- Laser alignment aid BA SLP
- Ground pillar UC SLP/SLC
- Housing for pillar Enclosure UC SLP/SLC
- Collision protector Damping UC SLP/SLC
- Redirection mirror SLP-3-M

Release date: 2009-12-14 11:23 Date of issue: 2009-12-14 11:4894_ENG.xml