

Model Number

SLP30-2

Safety light grid

Features

- Sensing range up to 30 m
- Self-monitoring (type 4 according to IEC/EN 61496-1)
- 2-radial design
- Beam spacing 500 mm
- Red transmission light
- Integrated function display
- Pre-fault indication
- Operation on control units of SB4 (SafeBox)

Accessories

SLP-X-M

Deviation mirror for SLP

MS SLP

Mounting bracket for Light grid

PG SLP-X

Protective glass panes for SLP series

PG HOLDER SLP

Holders for SLP protective glass panes

PA SLP/SLC

Profile alignment aid

BA SLP

laser alignment aid for safety light grids series SLP

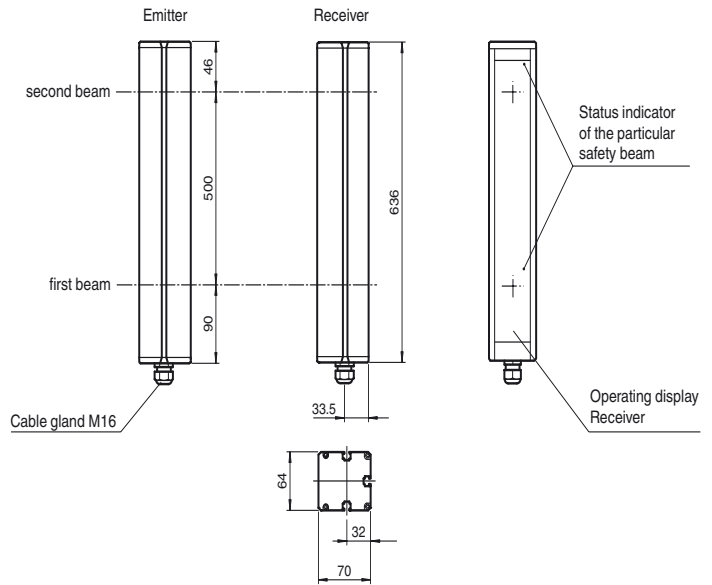
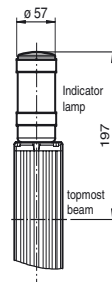
UC SLP/SLC

Floor stand for all series SLP/SLC devices

Additional accessories can be found in the Internet.

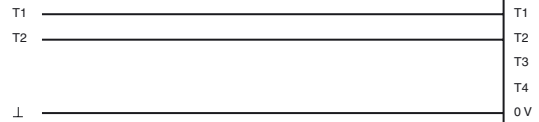
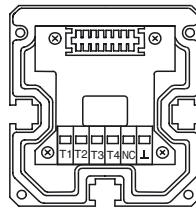
Dimensions

Option -L with indicator lamp (receiver only)

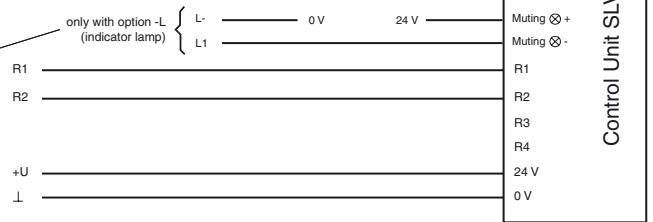
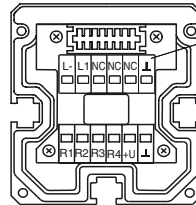


Electrical connection

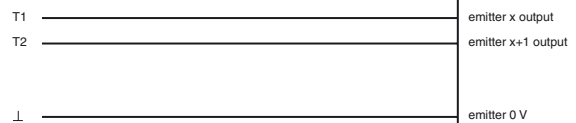
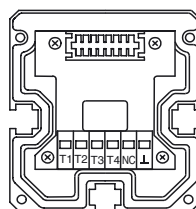
Emitter SLP



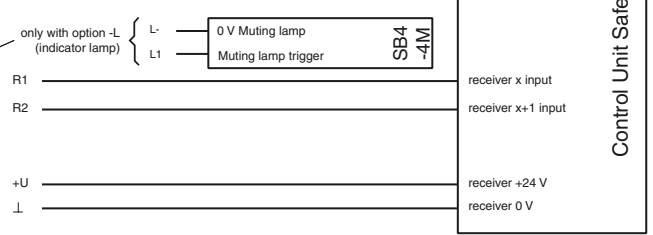
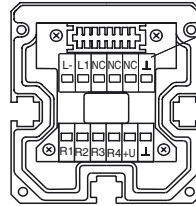
Receiver SLP (-L)



Emitter SLP



Receiver SLP (-L)



Release date: 2012-10-16 10:09 Date of issue: 2012-10-16 114436_eng.xml

Subject to modifications without notice

Pepperl+Fuchs Group
www.pepperl-fuchs.com

USA: +1 330 486 0001
fa-info@us.pepperl-fuchs.com

Germany: +49 621 776-4411
fa-info@pepperl-fuchs.com

Copyright Pepperl+Fuchs
Singapore: +65 6779 9091
fa-info@sg.pepperl-fuchs.com

Technical data

General specifications

Effective detection range	6 ... 30 m
Light source	LED
Light type	modulated visible red light
Approvals	TÜV
Tests	IEC/EN 61496
Safety type according to IEC/EN 61496	4
Marking	CE
Target size	static: 32 mm dynamic: 50 mm (at v = 1.6 m/s of the obstacle)
Beam spacing	500 mm
Number of beams	2
Angle of divergence	< 5 °

Functional safety related parameters

Safety Integrity Level (SIL)	SIL 3
Performance level (PL)	PL e
Category	Cat. 4
Mission Time (T _M)	20 a
PFH _d	2.81 E-9
Type	4

Indicators/operating means

Operating display	LED red in receiver
Function display	LED red: per receiver channel off: Interruption flashes: receiver continuously on: reception with sufficient stability control
Pre-fault indication	Functional display flashing

Electrical specifications

Operating voltage	U _B	Power supply via control unit
Protection class		III

Ambient conditions

Ambient temperature	-20 ... 60 °C (-4 ... 140 °F)
Storage temperature	-20 ... 70 °C (-4 ... 158 °F)
Relative humidity	max. 95 %, not condensing

Mechanical specifications

Protection degree	IP65
Connection	M16 cable gland , terminal compartment
Connection options	Further electrical connection options on request: Connector DIN 43 651 Hirschmann, emitter: 6-pin+PE, receiver: 11-pin+PE
Material	
Housing	extruded aluminum profile, RAL 1021 (yellow) coated
Optical face	Plastic pane
Mass	Per 2100 g

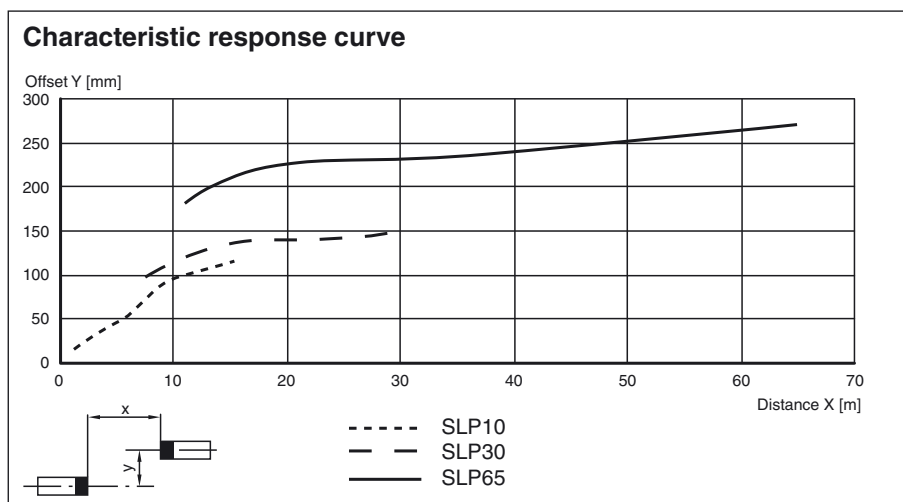
General information

System components	
Emitter	SLP30-2-T
Receiver	SLP30-2-R

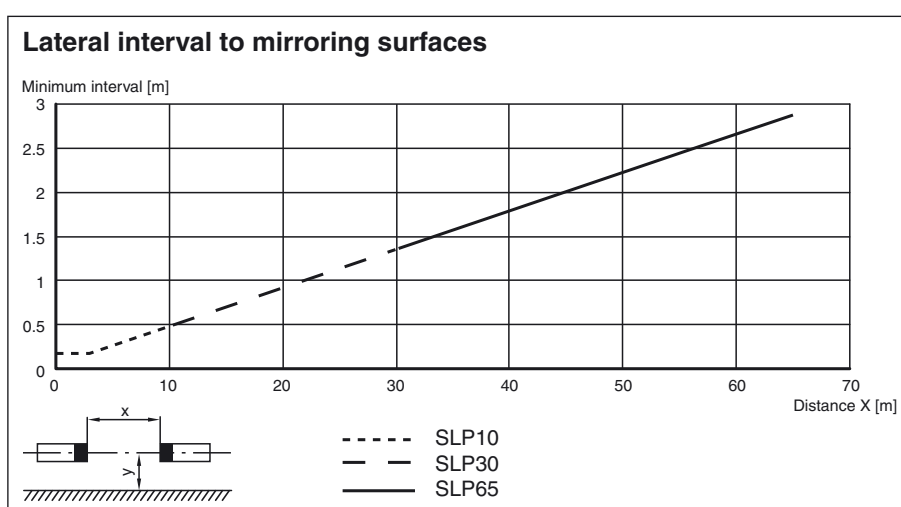
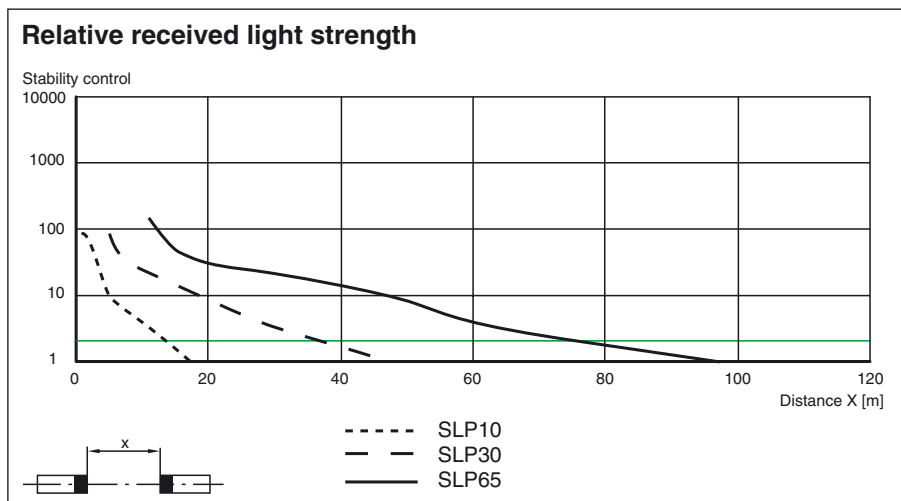
Approvals and certificates

CCC approval	Products with a maximum operating voltage of ≤36 V do not bear a CCC marking because they do not require approval.
--------------	--

Curves/Diagrams



Release date: 2012-10-16 10:09 Date of issue: 2012-10-16 11:44:36_eng.xml



System accessories

- Control unit SafeBox
- Mounting set MS SLP
- Protective glass pieces for SLP (to protect the optically functional surface)
- Ground pillar UC SLP/SLC
- Housing for pillar Enclosure UC SLP/SLC
- Collision protector Damping UC SLP/SLC
- Profile alignment aid
- Laser alignment aid SLP
- Redirection mirror for multi-side protection of hazardous areas SLP-...-M
- Muting Set MS SLP/SLA28 MS SLPCM

Release date: 2012-10-16 10:09 Date of issue: 2012-10-16 11:4436_eng.xml