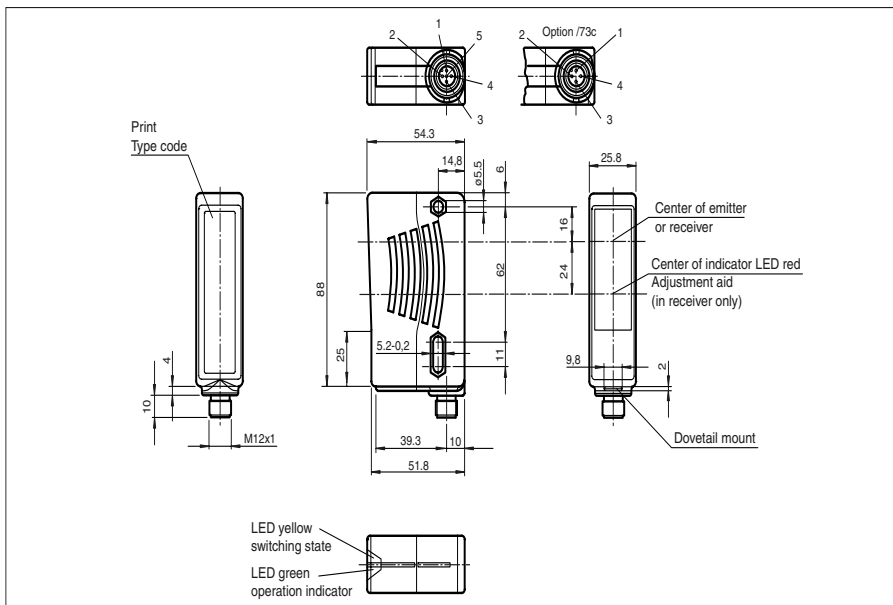




**Dimensions**



**Model Number**

**SLA28/105**

Safety thru-beam sensor  
with 5-pin, M12 x 1 plastic connector

**Features**

- Detection range up to 65 m
- Self-monitoring (type 4 according to IEC/EN 61496-1)
- Red transmission light
- Integrated alignment aid
- Clearly visible LED functional display and pre-fault indicator on the receiver
- Sturdy housing
- Waterproof, protection class IP67
- Operation on control units of SB4 (SafeBox)

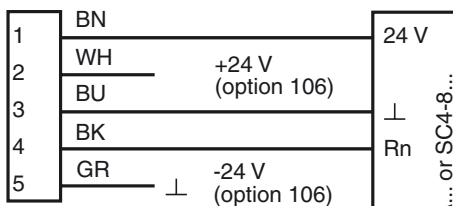
**Accessories**

**OMH-21**  
Mounting aid

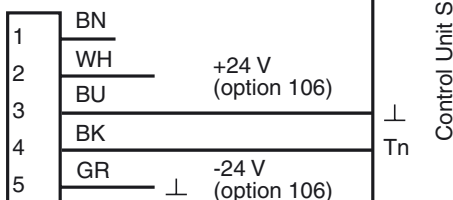
**Electrical connection**

Design with connector plug

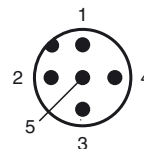
Receiver:



Emitter:



**Pinout**



Release date: 2009-12-14 11:09 Date of issue: 2009-12-14 11:2349\_ENG.xml

Additional accessories can be found in the Internet.

Subject to modifications without notice

Pepperl+Fuchs Group  
www.pepperl-fuchs.com

USA: +1 330 486 0001  
fa-info@us.pepperl-fuchs.com

Germany: +49 621 776-4411  
fa-info@pepperl-fuchs.com

Copyright Pepperl+Fuchs

Singapore: +65 6779 9091  
fa-info@sg.pepperl-fuchs.com

**Technical data**

**General specifications**

Effective detection range	0.2 ... 30 m
Number of protective field beams	1
Light source	LED
Light type	red, modulated light
Approvals	TÜV
Tests	IEC/EN 61496
Safety type according to IEC/EN 61496	4
Marking	CE
Obstacle size	static: 30 mm dynamic: 40 mm (at v = 1.6 m/s of the obstacle)
Alignment aid	LED red in receiver
Angle of divergence	< 5 °

**Functional safety related parameters**

Safety Integrity Level (SIL)	SIL 3
Performance level (PL)	PL e
Category	Cat. 4
Mission Time (T <sub>M</sub> )	20 a
PFH <sub>d</sub>	4.4 E-10

**Indicators/operating means**

Function display	LED yellow/green in receiver: off: Interruption yellow: transmission green: reception with sufficient stability control
Pre-fault indication	LED functional display yellow

**Electrical specifications**

Operating voltage	U <sub>B</sub>	Power supply via control unit
-------------------	----------------	-------------------------------

**Ambient conditions**

Ambient temperature	-20 ... 60 °C (253 ... 333 K)
Storage temperature	-20 ... 70 °C (253 ... 343 K)
Relative humidity	max. 95 %, not condensing

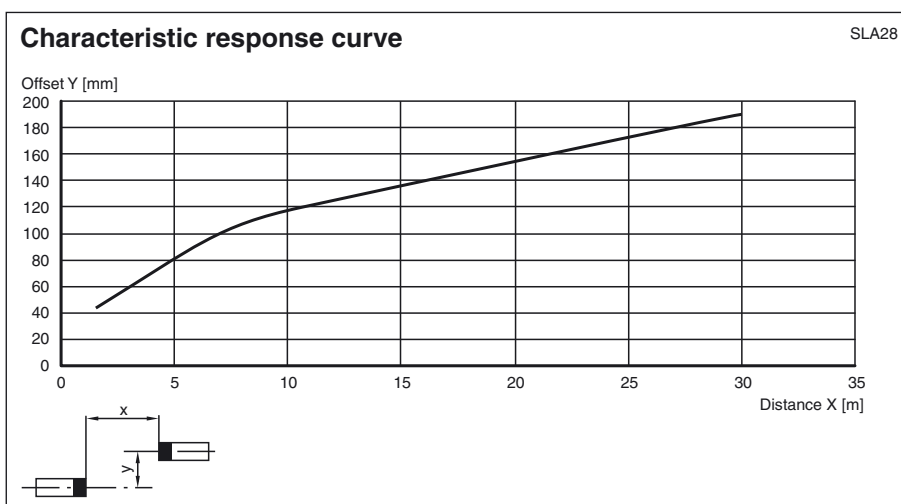
**Mechanical specifications**

Protection degree	IP67
Connection	M12 connector, 5 pin
Material	
Housing	ABS plastic, RLA 1021 (yellow) painted
Optical face	Plastic pane
Mass	Per 70 g

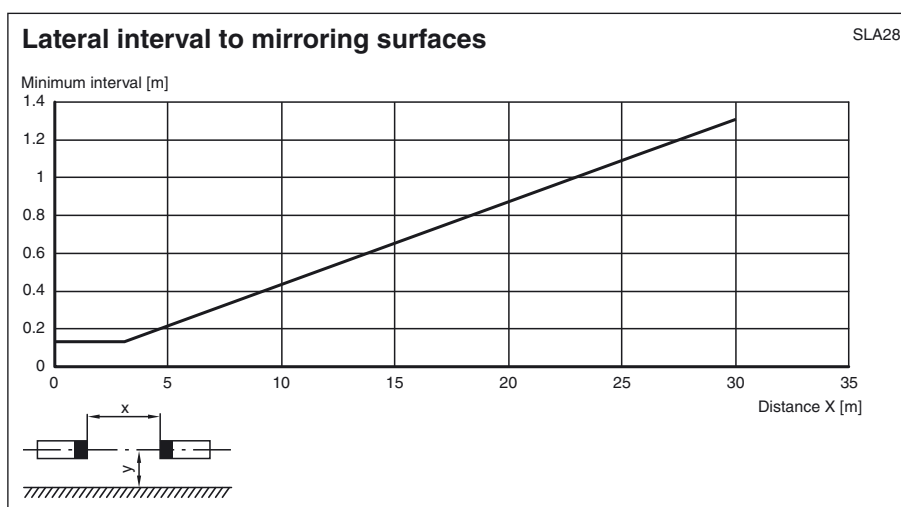
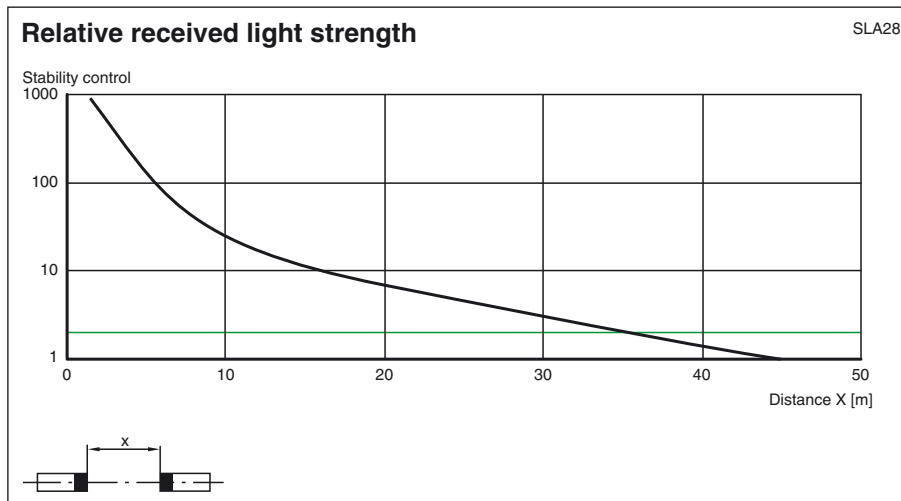
**General information**

System components	
Emitter	SLA28-T/105
Receiver	SLA28-R/105

**Curves/Diagrams**



Release date: 2009-12-14 11:09 Date of issue: 2009-12-14 11:29 ENG.xml



## Additional information

For much easier alignment even for long distance applications, an additional red LED is located in the receivers optics:

- LED constantly illuminated:  
signal strength < switching level
- LED flashes:  
signal strength is between 1-fold switching level and 2-fold switching level
- LED off:  
signal strength  $\geq$  2-fold switching level (function reserve)

## System accessories

### Control units

SLVA4-K plus  
SLVA8-K  
SC4-8

### Cable sockets

Option /105:

straight: V15-G-2M-PVC  
V15-G-5M-PVC  
V15-G-10M-PVC  
angled: V15-W-2M-PVC  
V15-W-5M-PVC  
V15-W-10M-PVC

Release date: 2009-12-14 11:09 Date of issue: 2009-12-14 11:2349\_ENG.xml

Option /116: no

**Mounting aids**

OMH-21  
OMH-22  
OMH-05  
OMH-MLV11-K

**Further accessories**

Laser alignment aid  
BA SLA28

Muting Set  
MS SLP/SLA28

Redirection mirror  
SLA-1-M