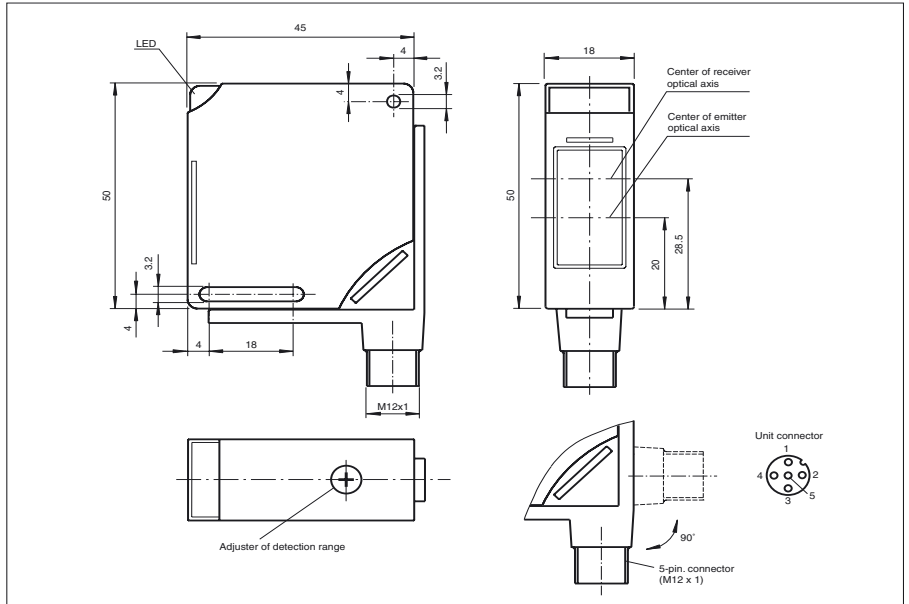




Dimensions



Model Number

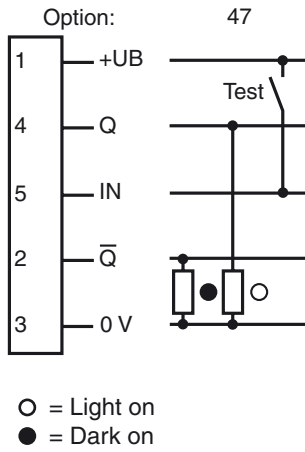
MLV11-8-H-E-150/47/65a/76a/112

Diffuse mode sensor with background suppression with 5-pin M12 connector, 90° adjustable position

Features

- Sensing range up to 150 mm
- Visible red light
- Pre-fault indication
- Test input
- Protection degree IP67
- All materials approved for food industry applications

Electrical connection



Release date: 2002-12-10 16:28 Date of issue: 2007-11-12 109097_ENG.xml

Technical data

General specifications

Detection range	0 ... 150 mm
Light source	LED
Approvals	CE
Adjustment range	20 ... 150 mm
Reference target	standard white 100 mm x 100 mm
Light type	red, modulated light
Diameter of the light spot	4 mm at a distance of 80 mm
Ambient light limit	10000 Lux

Indicators/operating means

Operating display	LED green
Function display	LED yellow: switching state LED red flashing pre-fault indicator
Operating elements	sensing range adjuster

Electrical specifications

Operating voltage	10 ... 30 V DC
Ripple	10 %
No-load supply current	$I_0 \leq 25 \text{ mA}$
Time delay before availability	$t_v \leq 80 \text{ ms}$

Input

Test input	emitter deactivation at +U _B
------------	---

Output

Switching type	light/dark switching
Signal output	2 switch outputs pnp, normally open/closed (complementary)
Switching voltage	max. 30 V DC
Switching current	max. 100 mA
Voltage drop	$U_d \leq 2.5 \text{ V}$
Switching frequency	$f \leq 1000 \text{ Hz}$
Response time	$\leq 0.5 \text{ ms}$

Standard conformity

Standards	EN 60947-5-2
-----------	--------------

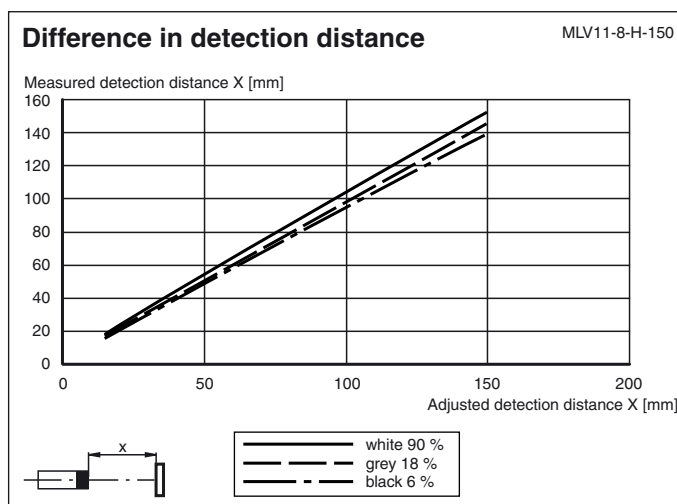
Ambient conditions

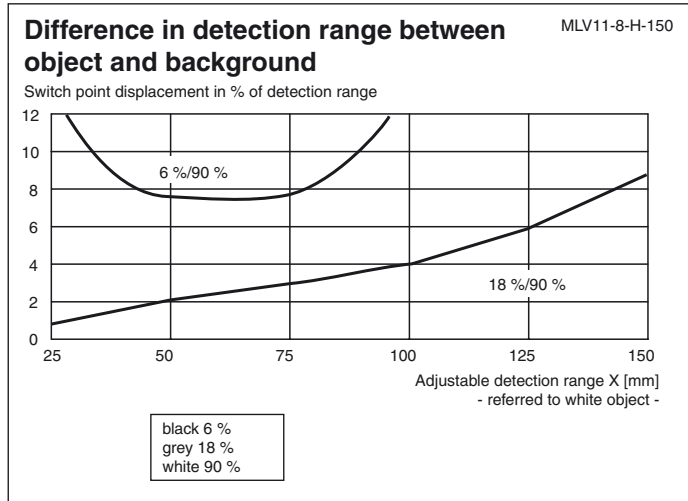
Ambient temperature	-25 ... 70 °C (248 ... 343 K)
Storage temperature	-40 ... 70 °C (233 ... 343 K)

Mechanical specifications

Protection degree	IP67
Connection	5-pin M12 x 1 connector, 90° adjustable position
Material	
Housing	ABS
Optical face	scratch resistant plastic pane
Mass	40 g

Curves/Diagrams





Release date: 2002-12-10 16:28 Date of issue: 2007-11-12 109097_ENG.xml