

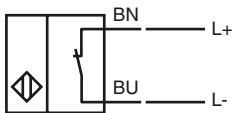
**Model Number**

SJ3,5-N-LED-Y

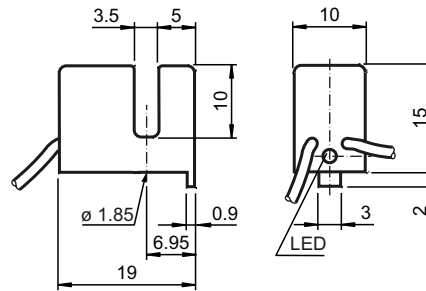
**Features**

- Comfort series
- 3.5 mm slot width

**Connection**



**Dimensions**



**Technical Data**

**General specifications**

Switching element function	NAMUR, NC
Slot width	3.5 mm
Depth of immersion (lateral)	5 ... 7 typ. 6 mm
Installation	
Output polarity	NAMUR

**Nominal ratings**

Nominal voltage	$U_o$	8 V
Operating voltage	$U_B$	5 ... 25 V
Switching frequency	$f$	0 ... 3000 Hz
Hysteresis	H	0.1 ... 0.4 mm

**Current consumption**

Measuring plate not detected	$\geq 3$ mA
Measuring plate detected	$\leq 1$ mA
Switching state indication	LED, yellow

**Ambient conditions**

Ambient temperature	-25 ... 100 °C (-13 ... 212 °F)
---------------------	---------------------------------

**Mechanical specifications**

Connection type	flexible leads LIY , 500 mm
Core cross-section	0.14 mm <sup>2</sup>
Housing material	PBT
Protection degree	IP67

**General information**

Use in the hazardous area	see instruction manuals
Category	2G

**Compliance with standards and directives**

<b>Standard conformity</b>	
NAMUR	EN 60947-5-6:2000 IEC 60947-5-6:1999
<b>Standards</b>	
	EN 60947-5-2:2007 IEC 60947-5-2:2007

**Approvals and certificates**

UL approval	cULus Listed, General Purpose
CSA approval	cCSAus Listed, General Purpose

Release date: 2013-02-07 18:28 Date of issue: 2013-02-07 106617\_eng.xml

**ATEX 2G**

Instruction

**Device category 2G**

Directive conformity

Standard conformity

CE marking

Ex-identification

EC-Type Examination Certificate

Appropriate type

Effective internal capacitance  $C_i$ Effective internal inductance  $L_i$ 

General

Highest permissible ambient temperature

Installation, Commissioning

Maintenance

**Specific conditions**

Protection from mechanical danger

**Manual electrical apparatus for hazardous areas**

for use in hazardous areas with gas, vapour and mist

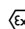
94/9/EG

EN 60079-0:2009, EN 60079-11:2007

Ignition protection "Intrinsic safety"

Use is restricted to the following stated conditions


 0102

 II 2G Ex ia IIC T6 Gb

PTB 99 ATEX 2219 X

SJ3,5-...-N...

 $\leq 50$  nF ; a cable length of 10 m is considered. $\leq 250$   $\mu$ H ; a cable length of 10 m is considered.

The apparatus has to be operated according to the appropriate data in the data sheet and in this instruction manual. The EC-Type Examination Certificate has to be observed. The special conditions must be adhered to!

The temperature ranges, according to temperature class, are given in the EC-Type Examination Certificate.

Laws and/or regulations and standards governing the use or intended usage goal must be observed. The intrinsic safety is only assured in connection with an appropriate related apparatus and according to the proof of intrinsic safety.

No changes can be made to apparatus, which are operated in hazardous areas. Repairs to these apparatus are not possible.

When used in the temperature range below  $-20$  °C the sensor should be protected from knocks by the provision of an additional housing.