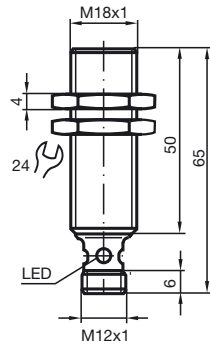


Reduction factor = 1

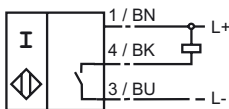
Resistant to welding



Switching element function	NPN	Make function
Rated operating distance s_n	5 mm	
Installation	embeddable	
Assured operating distance s_a	0 ... 4,05 mm	
Reduction factor r_{AI}	1	
Reduction factor r_{Cu}	1	
Reduction factor r_{V2A}	1	
Reduction factor r_{St37}	1	
Operating voltage U_B	10 ... 30 V	
Switching frequency f	0 ... 100 Hz	
Reverse polarity protection	Protected against reverse polarity	
Short circuit protection	pulsing	
Voltage drop U_d	≤ 3 V	
Operating current I_L	0 ... 200 mA	
Off-state current I_r	0 ... 0,5 mA typ.	
No-load supply current I_0	≤ 15 mA	
Constant magnetic field B	200 mT	
Alternating magnetic field B	200 mT	
Indication of the switching state	LED, yellow	
Standards	EN 60947-5-2	
Ambient temperature	-25 ... 70 °C (248 ... 343 K)	
Connection type	V1-connector	
Housing material	brass, teflon coated	
Sensing face	PPS	
Protection degree	IP65 according to EN 60529	

Connection_type:

E / E0



099258_ENG.xml

2003-12-03