

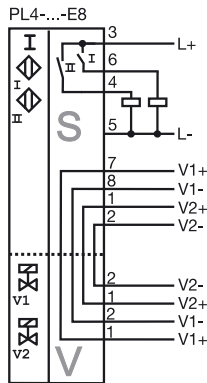
Model Number

PL4-F25-E8-K

Features

- For installation in housing
- Pluggable cage clamp terminals
- PL4... with 2 valve connections
- Valve LEDs disconnectable (wire jumper)
- Satisfies machinery directive

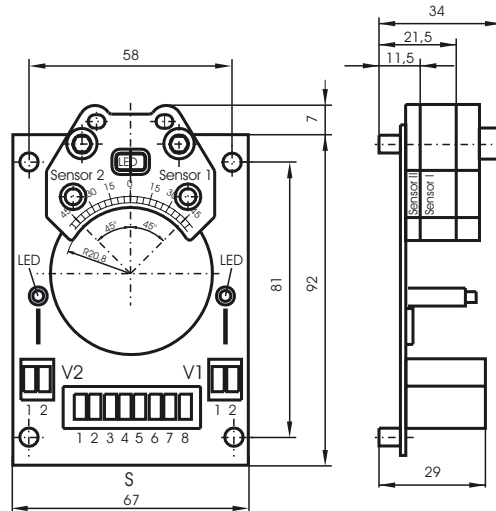
Connection



Accessories

- BT32**
Activator for F25 series
- BT32XS**
Activator for F25 series
- BT32XAS**
Activator for F25 series
- BT33**
Activator for F25 series
- BT34**
Activator for F25 series

Dimensions



Technical Data

General specifications

Switching element function	PNP	Dual NO
Rated operating distance	s_n	3 mm
Installation		embeddable mountable
Output polarity		DC
Assured operating distance	s_a	0 ... 2.43 mm
Reduction factor r_{AI}		0.5
Reduction factor r_{304}		1
Reduction factor r_{SI37}		1.1

Nominal ratings

Operating voltage	U_B	10 ... 30 V DC
Switching frequency	f	0 ... 100 Hz
Hysteresis	H	typ. 5 %
Reverse polarity protected		reverse polarity protected
Short-circuit protection		pulsing
Voltage drop	U_d	≤ 3 V
Operating current	I_L	0 ... 200 mA
Off-state current	I_r	0 ... 0.5 mA typ. 0.1 μ A at 25 °C
No-load supply current	I_0	≤ 25 mA
Operating voltage display		LED, green
Indication of the switching state		LED, yellow
Valve status indication		LED, yellow

Ambient conditions

Ambient temperature	-25 ... 70 °C (-13 ... 158 °F)
Storage temperature	-40 ... 85 °C (-40 ... 185 °F)

Mechanical specifications

Connection (system side)	Cage tension spring terminals
Core cross-section (system side)	up to 2.5 mm ²
Connection (valve side)	Cage tension spring terminals
Core cross-section (valve side)	up to 2.5 mm ²
Housing material	PBT
Sensing face	PBT
Protection degree	IP20

Compliance with standards and directives

Standard conformity	
Standards	EN 60947-5-2:2007 IEC 60947-5-2:2007

Release date: 2011-07-28 14:50 Date of issue: 2012-02-03 095100_eng.xml