



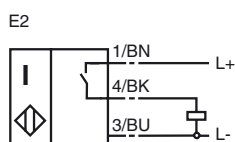
### Model Number

NMB2-12GM75-E2-NFE-V1

### Features

- Active surface metal
- 2 mm embeddable

### Connection



### Accessories

#### BF 12

Mounting flange

#### V1-G

Non pre-wired cable socket

#### V1-W

Non pre-wired cable socket

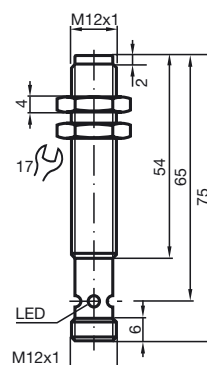
#### V1-G-2M-PUR

Cable connector

#### V1-W-2M-PUR

Cable connector

## Dimensions



## Technical Data

### General specifications

Switching element function	PNP	Make function
Rated operating distance	$s_n$	2 mm
Installation	embed. in mild steel	
Output polarity	DC	
Assured operating distance	$s_a$	0 ... 1.62 mm
Reduction factor $r_{Al}$	1	
Reduction factor $r_{Cu}$	1.1	
Reduction factor $r_{V2A}$	0	
Reduction factor $r_{St37}$	0	

### Nominal ratings

Operating voltage	$U_B$	10 ... 30 V
Switching frequency	$f$	0 ... 15 Hz
Hysteresis	$H$	3 ... 15 typ. 5 %
Reverse polarity protection	protected against reverse polarity	
Short-circuit protection	pulsing	
Voltage drop	$U_d$	$\leq 2$ V
Operating current	$I_L$	0 ... 200 mA
Off-state current	$I_r$	0 ... 10 $\mu$ A typ. 0.1 $\mu$ A at 25 °C
No-load supply current	$I_0$	$\leq 10$ mA
Indication of the switching state	LED, yellow	

### Standard conformity

Standards	IEC / EN 60947-5-2:2004
-----------	-------------------------

### Ambient conditions

Ambient temperature	-25 ... 70 °C (248 ... 343 K)
---------------------	-------------------------------

### Mechanical specifications

Connection type	V1-connector
Housing material	Stainless steel
Sensing face	Stainless steel
Protection degree	IP67