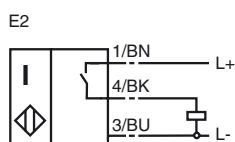


**Model Number**

NMB2-12GM75-E2-FE-V1

Features

- Active surface metal
- 2 mm embeddable

Connection**Accessories****BF 12**

Mounting flange

V1-G

Non pre-wired cable socket

V1-W

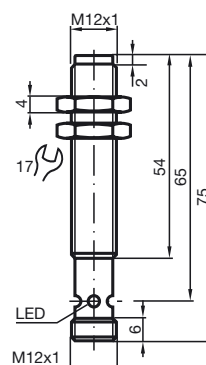
Non pre-wired cable socket

V1-G-2M-PUR

Cable connector

V1-W-2M-PUR

Cable connector

Dimensions**Technical Data****General specifications**

Switching element function	PNP	Make function
Rated operating distance	s_n	2 mm
Installation	embed. in mild steel	
Output polarity	DC	
Assured operating distance	s_a	0 ... 1.62 mm
Reduction factor r_{Al}	0	
Reduction factor r_{Cu}	0	
Reduction factor r_{V2A}	0.8	
Reduction factor r_{St37}	1	

Nominal ratings

Operating voltage	U_B	10 ... 30 V
Switching frequency	f	0 ... 100 Hz
Hysteresis	H	3 ... 15 typ. 5 %
Reverse polarity protection	protected against reverse polarity	
Short-circuit protection	pulsing	
Voltage drop	U_d	≤ 2 V
Operating current	I_L	0 ... 200 mA
Off-state current	I_r	0 ... 10 μ A typ. 0.1 μ A at 25 °C
No-load supply current	I_0	≤ 10 mA
Indication of the switching state	LED, yellow	

Standard conformity

Standards	IEC / EN 60947-5-2:2004
-----------	-------------------------

Ambient conditions

Ambient temperature	-25 ... 70 °C (248 ... 343 K)
---------------------	-------------------------------

Mechanical specifications

Connection type	V1-connector
Housing material	Stainless steel
Sensing face	Stainless steel
Protection degree	IP67