



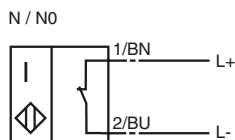
### Model Number

NJ2-V3-N-Y89557

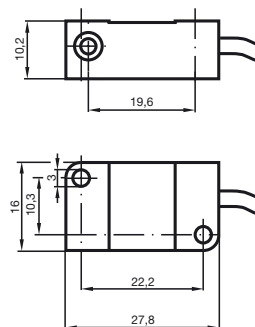
### Features

- Comfort series
- 2 mm embeddable

### Connection



## Dimensions



## Technical Data

### General specifications

Switching element function	NAMUR NC
Rated operating distance	$s_n$ 2 mm
Installation	embeddable
Output polarity	NAMUR
Assured operating distance	$s_a$ 0 ... 1.62 mm
Reduction factor $r_{AI}$	0.25
Reduction factor $r_{Cu}$	0.2
Reduction factor $r_{V2A}$	0.7

### Nominal ratings

Nominal voltage	$U_o$	8 V
Switching frequency	$f$	0 ... 1000 Hz
Hysteresis	$H$	typ. %
Current consumption		
Measuring plate not detected		$\geq 3$ mA
Measuring plate detected		$\leq 1$ mA

### Standard conformity

EMC in accordance with	IEC / EN 60947-5-2:2004
Standards	DIN EN 60947-5-6 (NAMUR)

### Ambient conditions

Ambient temperature	-25 ... 100 °C (248 ... 373 K)
---------------------	--------------------------------

### Mechanical specifications

Connection type	2 m, PVC cable
Core cross-section	0.14 mm <sup>2</sup>
Housing material	PBT
Sensing face	PBT
Protection degree	IP67

**ATEX**

## Data for Ex areas

Effective internal inductivity	$C_i$	$\leq 40 \text{ nF}$
Effective internal inductance	$L_i$	$\leq 35 \text{ }\mu\text{H}$