

CE

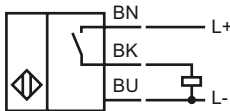
Model Number

NBB5-18K12-E2

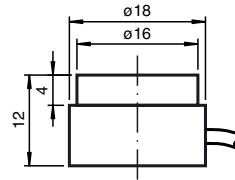
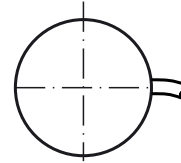
Features

- Basic series
- 5 mm embeddable

Connection



Dimensions



Technical Data

General specifications

Switching element function		PNP Make function
Rated operating distance	s_n	5 mm
Installation		embeddable
Output polarity		DC
Assured operating distance	s_a	0 ... 4.05 mm
Reduction factor r_{A1}		0.1
Reduction factor r_{Cu}		0.1
Reduction factor r_{V2A}		0.6
Reduction factor r_{Si37}		1

Nominal ratings

Operating voltage	U_B	10 ... 30 V
Switching frequency	f	0 ... 1000 Hz
Reverse polarity protection		protected against reverse polarity
Short-circuit protection		pulsing
Voltage drop	U_d	≤ 3 V
Operating current	I_L	0 ... 100 mA
Off-state current	I_r	0 ... 0.5 mA typ. 0.1 μ A at 25 °C
No-load supply current	I_0	≤ 13 mA

Standard conformity

Standards	IEC / EN 60947-5-2:2004
-----------	-------------------------

Ambient conditions

Ambient temperature	-25 ... 70 °C (248 ... 343 K)
---------------------	-------------------------------

Mechanical specifications

Connection type	2 m, PVC cable
Core cross-section	0.14 mm ²
Housing material	PA 6.6
Sensing face	PA 6.6
Protection degree	IP67