



Model Number

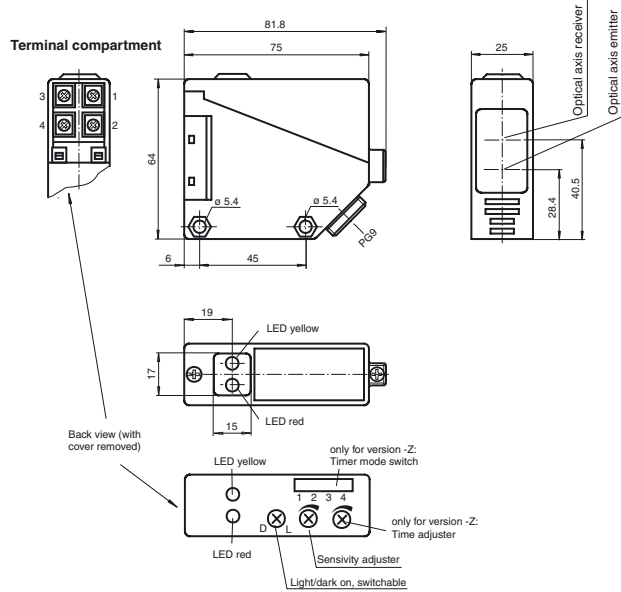
RLK39-8-800/31/40a/116

Diffuse mode sensor
with terminal compartment

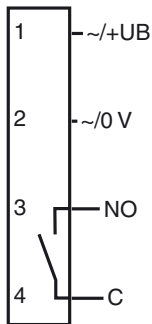
Features

- Infrared light
- Light/dark ON, switchable
- Protection degree IP67

Dimensions



Electrical connection



Release date: 2010-08-04 15:27 Date of issue: 2010-08-04 088633_ENG.xml

Subject to modifications without notice

Pepperl+Fuchs Group
www.pepperl-fuchs.com

USA: +1 330 486 0001
fa-info@us.pepperl-fuchs.com

Germany: +49 621 776-4411
fa-info@pepperl-fuchs.com

Copyright Pepperl+Fuchs

Singapore: +65 6779 9091
fa-info@sg.pepperl-fuchs.com

Technical data**General specifications**

Detection range	0 ... 800 mm
Adjustment range	65 ... 800 mm
Reference target	standard white 200 mm x 200 mm
Light source	IRED
Light type	modulated infrared light
Approvals	CE
Ambient light limit	10000 Lux

Indicators/operating means

Function display	LED yellow: switching state LED red: pre-fault indication
Controls	Detection range adjuster, light/dark switch

Electrical specifications

Operating voltage	U_B	12 ... 240 V DC 24 ... 240 V AC (50 ... 60 Hz)
Ripple		10 %
No-load supply current	I_0	≤ 35 mA
Power consumption	P_0	≤ 3 VA
Time delay before availability	t_v	≤ 50 ms

Output

Switching type	light/dark switching	
Signal output	1 relay output	
Switching voltage	≤ 240 V AC	
Switching current	max. 3 A	
Switching frequency	f	≤ 25 Hz
Response time		≤ 20 ms

Standard conformity

Standards	EN 60947-5-2
-----------	--------------

Ambient conditions

Ambient temperature	-25 ... 55 °C (-13 ... 131 °F)
Storage temperature	-40 ... 70 °C (-40 ... 158 °F)

Mechanical specifications

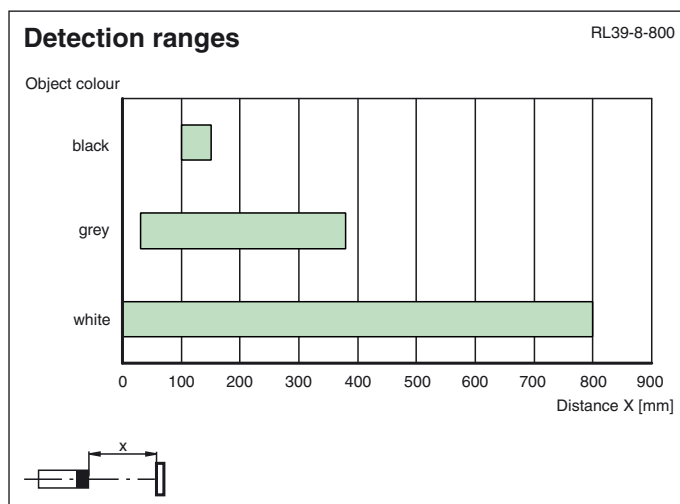
Protection degree	IP67
Connection	terminal compartment PG9, ≤ 2.5 mm ²
Material	
Housing	PBT
Optical face	PMMA
Mass	110 g

Compliance with standards and directives

Directive conformity	
EMC Directive 2004/108/EC	EN 60947-5-2

Approvals and certificates

CCC approval Certified by China Compulsory Certification (CCC)

**Additional Information****Conventional use:****Accessories****OMH-RL39**

Mounting bracket for RL39 series Sensors

The reflex light scanner contains the emitter and receiver in a single housing. The light from transmitter is beamed back from the recorded object is evaluated by the receiver. The detection range depend on the object colour. With dark or very small objects the detection range reduces.

Mounting instructions:

The sensor can be fastened over the through-holes directly or with the included mounting bracket. The base surface must be flat to avoid distorting the housing during mounting. It is advisable to secure the bolts and screws with washers so that the sensor does not become misaligned.

Instructions for adjustment:

Adjust the sensor on the background. If the yellow LED illuminates, the detection range needs to be reduced with the detection range adjuster, until the yellow LED goes off.

Object detection check:

Position the object into the light beam. Position light spot on object. If the object is detected, the yellow LED illuminated. If it does not light up, further to adjust the detection range with the potentiometer, until the yellow LED lights up.

The red LED flashes if reception deteriorates (e.g. soiled lenses or by maladjustment) and when falling short of the stability control.

Illustration:

We recommend that you clean the optical interfaces and check the plug-in connections and screw connections at regular intervals.