



**Model Number**

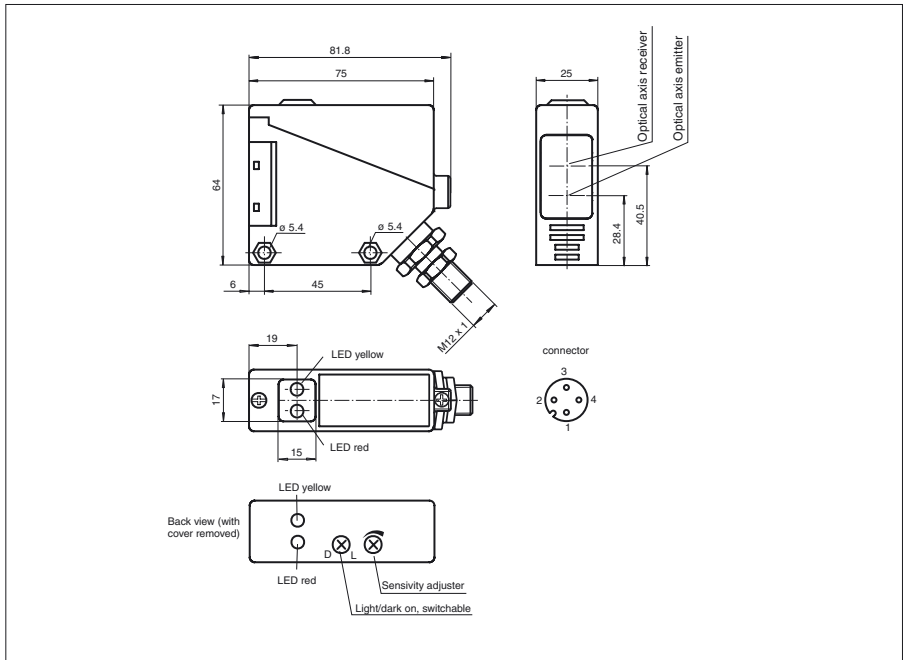
**RL39-8-2000/32/40a/73c/82a**

Diffuse mode sensor  
with terminal compartment

**Features**

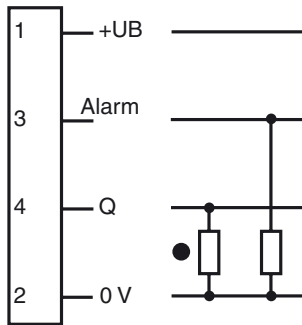
- Infrared light
- Light/dark ON, switchable
- Protection degree IP67

**Dimensions**



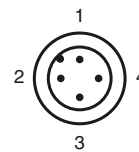
**Electrical connection**

Option: 32/40a/82a



- = Light on
- = Dark on

**Pinout**



Release date: 2011-10-17 08:42 Date of issue: 2011-10-17 088826\_eng.xml

## Technical data

### General specifications

Detection range	0 ... 2000 mm
Adjustment range	75 ... 2000 mm
Reference target	standard white 200 mm x 200 mm
Light source	IRED
Light type	modulated infrared light
Approvals	CE
Ambient light limit	10000 Lux

### Indicators/operating means

Function display	LED yellow: switching state LED red: pre-fault indication
Controls	Detection range adjuster, light/dark switch

### Electrical specifications

Operating voltage	$U_B$	10 ... 30 V DC
Ripple		10 %
No-load supply current	$I_0$	$\leq 35$ mA
Time delay before availability	$t_v$	$\leq 50$ ms

### Output

Output of the pre-fault indication	1 PNP, active when falling short of the stability control	
Switching type	light/dark on	
Signal output	1 PNP output, short-circuit protected, protected from reverse polarity, open collector	
Switching voltage	max. 30 V DC	
Switching current	max. 200 mA	
Voltage drop	$U_d$	$\leq 3$ V
Switching frequency	$f$	$\leq 300$ Hz
Response time		$\leq 1.5$ ms

### Standard conformity

Standards	EN 60947-5-2
-----------	--------------

### Ambient conditions

Ambient temperature	-25 ... 55 °C (-13 ... 131 °F)
Storage temperature	-40 ... 55 °C (-40 ... 131 °F)

### Mechanical specifications

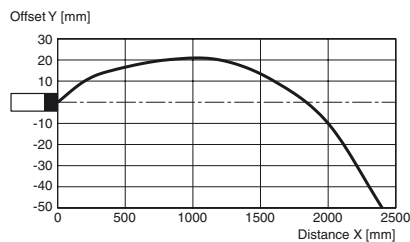
Protection degree	IP67
Connection	connector M12 x 1, 4-pin
Material	
Housing	PBT
Optical face	PMMA
Mass	100 g

### Approvals and certificates

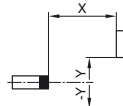
CCC approval	Products with a maximum operating voltage of $\leq 36$ V do not bear a CCC marking because they do not require approval.
--------------	--

## Curves/Diagrams

### Characteristic response curve



Permissible distance (offset) between optical axis and object.



## Additional Information

### Conventional use:

The reflex light scanner contains the emitter and receiver in a single housing. The light from transmitter is beamed back from the recorded object is evaluated by the receiver. The detection range depend on the object colour. With dark or very small objects the detection range reduces.

**Mounting instructions:**

The sensor can be fastened over the through-holes directly or with the included mounting bracket. The base surface must be flat to avoid distorting the housing during mounting. It is advisable to secure the bolts and screws with washers so that the sensor does not become misaligned.

**Instructions for adjustment:**

Adjust the sensor on the background. If the yellow LED illuminates, the detection range needs to be reduced with the detection range adjuster, until the yellow LED goes off.

**Object detection check:**

Position the object into the light beam. Position light spot on object. If the object is detected, the yellow LED illuminated. If it does not light up, further to adjust the detection range with the potentiometer, until the yellow LED lights up.

The red LED flashes if reception deteriorates (e.g. soiled lenses or by maladjustment) and when falling short of the stability control.

**Illustration:**

We recommend that you clean the optical interfaces and check the plug-in connections and screw connections at regular intervals.